



# GDB Information Disclosure Requirements Information Templates for Schedules 1–10

Company Name	Powerco Limited
Disclosure Date	31 March 2026
Disclosure Year (year ended)	30 September 2025

GDB Templates for Schedules 1–10 excluding 5f–5g  
GDB Template Version 6. Prepared 3 July 2025

# Commerce Commission Information Disclosure Template

## Table of Contents

Schedule	Schedule name	Sheetname	Description
1	<a href="#">ANALYTICAL RATIOS</a>	S1.Analytical Ratios	This schedule calculates expenditure, revenue and service ratios from the information disclosed. The disclosed ratios may vary for reasons that are company specific and, as a result, must be interpreted with care. The Commerce Commission will publish a summary and analysis of information disclosed in accordance with the ID determination. This will include information disclosed in accordance with this and other schedules, and information disclosed under the other requirements of the determination. This information is part of audited disclosure information (as defined in section 1.4 of the ID determination), and so is subject to the assurance report required by section 2.8.
2	<a href="#">REPORT ON RETURN ON INVESTMENT</a>	S2.Return on Investment	This schedule requires information on the Return on Investment (ROI) for the GDB relative to the Commerce Commission's estimates of post tax WACC and vanilla WACC. GDBs must calculate their ROI based on a monthly basis if required by clause 2.3.3 of the ID Determination or if they elect to. If a GDB makes this election, information supporting this calculation must be provided in 2(iii). GDBs must provide explanatory comment on their ROI in Schedule 14 (Mandatory Explanatory Notes). This information is part of audited disclosure information (as defined in section 1.4 of the ID determination), and so is subject to the assurance report required by section 2.8.
3	<a href="#">REPORT ON REGULATORY PROFIT</a>	S3.Regulatory Profit	This schedule requires information on the calculation of regulatory profit for the GDB for the disclosure year. GDBs must complete all sections and must provide explanatory comment on their regulatory profit in Schedule 14 (Mandatory Explanatory Notes). This information is part of audited disclosure information (as defined in section 1.4 of the ID determination), and so is subject to the assurance report required by section 2.8.
4	<a href="#">REPORT ON VALUE OF THE REGULATORY ASSET BASE (ROLLED FORWARD)</a>	S4.RAB value (Rolled Forward)	This schedule requires information on the calculation of the Regulatory Asset Base (RAB) value to the end of this disclosure year. This informs the ROI calculation in Schedule 2. GDBs must provide explanatory comment on the value of their RAB in Schedule 14 (Mandatory Explanatory Notes). This information is part of audited disclosure information (as defined in section 1.4 of the ID determination), and so is subject to the assurance report required by section 2.8.
5a	<a href="#">REPORT ON REGULATORY TAX ALLOWANCE</a>	S5a.Regulatory Tax Allowance	This schedule requires information on the calculation of the regulatory tax allowance. This information is used to calculate regulatory profit/loss in Schedule 3 (regulatory profit). GDBs must provide explanatory commentary on the information disclosed in this schedule, in Schedule 14 (Mandatory Explanatory Notes). This information is part of audited disclosure information (as defined in section 1.4 of the ID determination), and so is subject to the assurance report required by section 2.8.
5b	<a href="#">REPORT ON RELATED PARTY TRANSACTIONS</a>	S5b.Related Party Transactions	This schedule provides information on the valuation of related party transactions, in accordance with clause 2.3.6 of the ID determination. This information is part of audited disclosure information (as defined in clause 1.4 of the ID determination), and so is subject to the assurance report required by clause 2.8.
5c	<a href="#">REPORT ON TERM CREDIT SPREAD DIFFERENTIAL ALLOWANCE</a>	S5c.TCSD Allowance	This schedule is only to be completed if, as at the date of the most recently published financial statements, the weighted average original tenor of the debt portfolio (both qualifying debt and non-qualifying debt) is greater than five years. This information is part of audited disclosure information (as defined in section 1.4 of the ID determination), and so is subject to the assurance report required by section 2.8.
5d	<a href="#">REPORT ON COST ALLOCATIONS</a>	S5d.Cost Allocations	This schedule provides information on the allocation of operational costs. GDBs must provide explanatory comment on their cost allocation in Schedule 14 (Mandatory Explanatory Notes), including on the impact of any reclassifications. This information is part of audited disclosure information (as defined in section 1.4 of the ID determination), and so is subject to the assurance report required by section 2.8.
5e	<a href="#">REPORT ON ASSET ALLOCATIONS</a>	S5e.Asset Allocations	This schedule requires information on the allocation of asset values. This information supports the calculation of the RAB value in Schedule 4. GDBs must provide explanatory comment on their cost allocation in Schedule 14 (Mandatory Explanatory Notes), including on the impact of any changes in asset allocations. This information is part of audited disclosure information (as defined in section 1.4 of the ID determination), and so is subject to the assurance report required by section 2.8.
6a	<a href="#">REPORT ON CAPITAL EXPENDITURE FOR THE DISCLOSURE YEAR</a>	S6a.Actual Expenditure Capex	This schedule requires a breakdown of capital expenditure on assets incurred in the disclosure year, including any assets in respect of which capital contributions are received, but excluding assets that are vested assets. Information on expenditure on assets must be provided on an accounting accruals basis and must exclude finance costs. GDBs must provide explanatory comment on their expenditure on assets in Schedule 14 (Explanatory notes to templates). This information is part of audited disclosure information (as defined in section 1.4 of the ID determination), and so is subject to the assurance report required by section 2.8.

## Commerce Commission Information Disclosure Template

Schedule	Schedule name	Sheetname	Description
6b	<a href="#">REPORT ON OPERATIONAL EXPENDITURE FOR THE DISCLOSURE YEAR</a>	S6b.Actual Expenditure Opex	This schedule requires a breakdown of operational expenditure incurred in the current disclosure year. GDBs must provide explanatory comment on their operational expenditure in Schedule 14 (Explanatory notes to templates). This includes explanatory comment on any atypical operational expenditure and assets replaced or renewed as part of asset replacement and renewal operational expenditure, and additional information on insurance. This information is part of audited disclosure information (as defined in section 1.4 of the ID determination), and so is subject to the assurance report required by section 2.8.
7	<a href="#">COMPARISON OF FORECASTS TO ACTUAL EXPENDITURE</a>	S7.Actual vs Forecast Exp	This schedule compares actual revenue and expenditure to the previous forecasts that were made for the disclosure year. Accordingly, this schedule requires the forecast revenue and expenditure information from previous disclosures to be inserted. GDBs must provide explanatory comment on the variance between actual and target revenue and forecast expenditure in Schedule 14 (Mandatory Explanatory Notes). This information is part of the audited disclosure information (as defined in section 1.4 of the ID determination), and so is subject to the assurance report required by section 2.8. For the purpose of this audit, target revenue and forecast expenditures only need to be verified back to previous disclosures.
8	<a href="#">REPORT ON BILLED QUANTITIES AND LINE CHARGE REVENUES (BY PRICE COMPONENT)</a>	S8.Billed Quantities + Revenues	This schedule requires the billed quantities and associated line charge revenues for the disclosure year for each consumer group or price category code used by the GDB in its pricing schedules. Information is also required on the number of ICPs that are included in each consumer group or price category code, and the energy delivered to these ICPs.
9a	<a href="#">ASSET REGISTER</a>	S9a.Asset Register	This schedule requires a summary of the quantity of assets that make up the network, by asset category and asset class.
9b	<a href="#">ASSET AGE PROFILE</a>	S9b.Asset Age Profile	This schedule requires a summary of the age profile (based on year of installation) of the assets that make up the network, by asset category and asset class.
9c	<a href="#">REPORT ON PIPELINE DATA</a>	S9c.Pipeline Data	This schedule requires a summary of the key characteristics of the pipeline network.
9d	<a href="#">REPORT ON DEMAND</a>	S9d.Demand (All)	This schedule requires a summary of the key measures of network demand for the disclosure year (number of new connections including, maximum monthly loads and total gas conveyed)
10a	<a href="#">REPORT ON NETWORK RELIABILITY AND INTERRUPTIONS</a>	S10a.Reliability	This schedule requires a summary of the key measures of network reliability (interruptions, SAIDI, SAIFI and CAIDI) for the disclosure year GDBs must provide explanatory comment on their network reliability for the disclosure year in Schedule 14 (Explanatory Notes to Templates). The SAIDI and SAIFI information is part of audited disclosure information (as defined in section 1.4 of the ID determination) and so is subject to the assurance report required by section 2.8.
10b	<a href="#">REPORT ON NETWORK INTEGRITY AND CONSUMER SERVICES</a>	S10b.Integrity	This schedule requires a summary of the key measures of network Integrity (gas escapes, response time to emergencies etc) for the disclosure year.

### **Disclosure Template Instructions**

These templates have been prepared for use by GDBs when making disclosures under subclauses 2.3.1, 2.4.21, 2.4.22, 2.5.1, and 2.5.2 of the Gas Distribution Information Disclosure (amendments related to IM Review 2023) Amendment Determination 2024.

### ***Company Name and Dates***

To prepare the templates for disclosure, the suppliers company name should be entered in cell C8, the date of the last day of the current (disclosure) year should be entered in cell C12, and the date on which the information is disclosed should be entered in cell C10 of the CoverSheet worksheet.

Dates should be entered in day/month/year order (Example -"1 April 2024").

### ***Data Entry Cells and Calculated Cells***

Data entered into this workbook may be entered only into the data entry cells inside excel table objects. Data entry cells are the bordered, shaded areas (light yellow cells) in each Schedule. Under no circumstances should data be entered into the workbook outside a data entry cell.

In some cases, where the information for disclosure is able to be ascertained from disclosures elsewhere in the workbook, such information is disclosed in a calculated cell.

### ***Validation Settings on Data Entry Cells***

To maintain a consistency of format and to help guard against errors in data entry, some data entry cells test keyboard entries for validity and accept only a limited range of values. For example, entries may be limited to a list of category names, to values between 0% and 100%, or either a numeric entry or the text entry "N/A". These checks are applied to keyboard entries only and not, for example, to entries made using Excel's copy and paste facility.

### ***Conditional Formatting Settings on Data Entry Cells***

Schedule 2 cells G63 and H63:K63 will change colour if the total cashflows do not equal the corresponding values in table 2(ii).

Schedule 4 cells O98:O104 and O106 will change colour if the RAB values do not equal the corresponding values in table 4(ii).

Schedule 9b cells AU4 to AU31 will change colour if the total assets at year end for each asset class does not equal the corresponding values in column I in Schedule 9a.

Schedule 9c cell F17 will change colour if F17 (system length by operating pressure) does not equal F10 (system length by material).

### ***Inserting Additional Rows and Columns***

The templates for some Schedules may require additional rows to be inserted in tables marked 'include additional rows if needed' or similar. When inserting rows do so from within the table and the 'Row' column should prepopulate with the row number.

Additional rows must not be inserted directly above the first row or below the last row of a table. This is to ensure that entries made in the new row are included in the totals.

### ***Disclosures by Sub-Network***

Schedules 8, 9a, 9b, 9c, 9d, 10a and 10b must be completed for the network and for each sub-network. A copy of the schedule worksheet(s) must be made for each subnetwork and named accordingly.

### ***Schedule References***

The column labelled "Row" of each table can be used to reference individual rows of the schedule. It may be useful to refer to this row number when writing explanatory notes about a specific data point.

**Description of Calculation References**

Calculation cell formulas contain links to other cells within the same template or elsewhere in the workbook. Key cell references are described in a column to the right of each template. These descriptions are provided to assist data entry. Cell references refer to the row of the template and not the schedule reference.

**Worksheet Completion Sequence**

Calculation cells may show an incorrect value until precedent cell entries have been completed. Data entry may be assisted by completing the schedules in the following order:

1. Coversheet
2. Schedules 5a–5e
3. Schedules 6a–6b
4. Schedule 8
5. Schedule 3
6. Schedule 4
7. Schedule 2
8. Schedule 7
9. Schedules 9a-9d
10. Schedules 10a and 10b

**Cell colouring**

1. Light yellow: Data entry
2. Dark yellow: Data entry - provided to Commission only
3. Light grey: Formula
4. Dark grey: Blank/ empty columns

Commerce Commission Information Disclosure Template

**SCHEDULE 1: ANALYTICAL RATIOS**

**1(i): Expenditure Metrics**

Section	Row	Context	Category1	Category2	Expenditure per TJ energy delivered to ICPs (\$/TJ)	Expenditure per average no. of ICPs (\$/ICP)	Ratio of expenditure to maximum monthly load (\$ per GJ/month)	Expenditure per km of pipeline for supply (\$/km)
1(i): Expenditure Metrics	4		<b>Operational expenditure</b>		2,601	181	23	3,237
1(i): Expenditure Metrics	5		Operational expenditure	Network	1,135	79	10	1,413
1(i): Expenditure Metrics	6		Operational expenditure	Non-network	1,466	102	13	1,824
1(i): Expenditure Metrics	7		<b>Expenditure on assets</b>		1,905	132	17	2,370
1(i): Expenditure Metrics	8		Expenditure on assets	Network	1,789	124	16	2,226
1(i): Expenditure Metrics	9		Expenditure on assets	Non-network	116	8	1	144

**1(ii): Revenue Metrics**

Section	Row	Context	Category1	Category2	Revenue per TJ energy delivered to ICPs (\$/TJ)	Revenue per average no. of ICPs (\$/ICP)
1(ii): Revenue Metrics	14		<b>Total line charge revenue</b>		8,641	601
1(ii): Revenue Metrics	15		Standard consumer line charge revenue		13,812	538
1(ii): Revenue Metrics	16		Non-standard consumer line charge revenue		2,087	34,380

**1(iii): Service Intensity Measures**

Section	Row	Context	Category1	Category2	Service intensity measure
1(iii): Service Intensity Measures	21		Demand density	Maximum monthly load (GJ per month) per system length	142
1(iii): Service Intensity Measures	22		Volume density	Quantity of gas delivered per km of system length (TJ/km)	1
1(iii): Service Intensity Measures	23		Connection point density	Average number of ICPs in disclosure year per system length	18
1(iii): Service Intensity Measures	24		Energy intensity	Total GJ delivered to ICPs per average number of ICPs in disclosure year	70

**1(iv): Composition of Revenue Requirement**

Section	Row	Context	Category1	Category2	(\$000)	% of revenue
1(iv): Composition of Revenue Requirement	29		Operational expenditure		20,407	29.25%
1(iv): Composition of Revenue Requirement	30		Pass-through and recoverable costs excluding financial incentives and wash-ups		2,071	2.97%
1(iv): Composition of Revenue Requirement	31		Total depreciation		26,820	38.44%
1(iv): Composition of Revenue Requirement	32		Total revaluations		13,816	19.80%
1(iv): Composition of Revenue Requirement	33		Regulatory tax allowance		5,515	7.91%
1(iv): Composition of Revenue Requirement	34		Regulatory profit/(loss) including financial incentives and wash-ups		28,381	40.68%
1(iv): Composition of Revenue Requirement	35		<b>Total regulatory income</b>		69,762	

**1(v): Reliability**

Section	Row	Context	Category1	Category2	Interruptions per 100km of system length
1(v): Reliability	40		Interruption rate		7.63

Commerce Commission Information Disclosure Template

**SCHEDULE 2: REPORT ON RETURN ON INVESTMENT**

**2(i): Return on Investment**

Section	Row	Context	Category1	Category2	CY-2   %	CY-1   %	Current year CY   %
2(i): Return on Investment	4		<b>ROI - comparable to a post tax WACC</b>	Reflecting all revenue earned	7.61%	4.66%	6.16%
2(i): Return on Investment	5		ROI - comparable to a post tax WACC	Excluding revenue earned from financial incentives	7.61%	4.66%	6.16%
2(i): Return on Investment	6		ROI - comparable to a post tax WACC	Excluding revenue earned from financial incentives and wash-ups	7.61%	4.66%	6.11%
2(i): Return on Investment	7		<b>Mid-point estimate of post tax WACC</b>		6.19%	7.13%	6.35%
2(i): Return on Investment	8		Mid-point estimate of post tax WACC	25th percentile estimate	5.48%	6.42%	5.64%
2(i): Return on Investment	9		Mid-point estimate of post tax WACC	75th percentile estimate	6.90%	7.84%	7.06%
2(i): Return on Investment	10		<b>ROI - comparable to a vanilla WACC</b>	Reflecting all revenue earned	8.25%	5.45%	6.81%
2(i): Return on Investment	11		ROI - comparable to a vanilla WACC	Excluding revenue earned from financial incentives	8.25%	5.45%	6.81%
2(i): Return on Investment	12		ROI - comparable to a vanilla WACC	Excluding revenue earned from financial incentives and wash-ups	8.25%	5.45%	6.76%
2(i): Return on Investment	13		<b>WACC rate used to set regulatory price path</b>		6.14%	6.14%	6.14%
2(i): Return on Investment	14		<b>Mid-point estimate of vanilla WACC</b>		6.82%	7.91%	7.00%
2(i): Return on Investment	15		Mid-point estimate of vanilla WACC	25th percentile estimate	6.11%	7.21%	6.29%
2(i): Return on Investment	16		Mid-point estimate of vanilla WACC	75th percentile estimate	7.53%	8.62%	7.71%

**2(ii): Information Supporting the ROI**

Section	Row	Context	Category1	Category2	(\$000)
2(ii): Information Supporting the ROI	21		Total opening RAB value		454,818
2(ii): Information Supporting the ROI	22	plus	Opening deferred tax		(31,204)
2(ii): Information Supporting the ROI	23		<b>Opening RIV</b>		423,614
2(ii): Information Supporting the ROI	24		<b>Line charge revenue</b>		67,793
2(ii): Information Supporting the ROI	25		Mid-year net cash outflows	Expenses cash outflow	22,478
2(ii): Information Supporting the ROI	26	plus	Mid-year net cash outflows	Assets commissioned	14,763
2(ii): Information Supporting the ROI	27	less	Mid-year net cash outflows	Asset disposals	(89)
2(ii): Information Supporting the ROI	28	plus	Mid-year net cash outflows	Tax payments	5,479
2(ii): Information Supporting the ROI	29	less	Mid-year net cash outflows	Other regulated income	1,969
2(ii): Information Supporting the ROI	30		<b>Mid-year net cash outflows</b>		40,840
2(ii): Information Supporting the ROI	31		<b>Term credit spread differential allowance</b>		384
2(ii): Information Supporting the ROI	32		Closing RIV	Total closing RAB value	455,869
2(ii): Information Supporting the ROI	33	less	Closing RIV	Adjustment resulting from asset allocation	(797)
2(ii): Information Supporting the ROI	34	less	Closing RIV	Lost and found assets adjustment	-
2(ii): Information Supporting the ROI	35	plus	Closing RIV	Closing deferred tax	(31,241)
2(ii): Information Supporting the ROI	36		<b>Closing RIV</b>		425,426

**2(ii): Information Supporting the ROI**

Section	Row	Context	Category1	Category2	%
2(ii): Information Supporting the ROI	41		<b>ROI - comparable to a vanilla WACC</b>		6.81%
2(ii): Information Supporting the ROI	42		ROI - comparable to a post tax WACC	Leverage (%)	42%
2(ii): Information Supporting the ROI	43		ROI - comparable to a post tax WACC	Cost of debt assumption (%)	5.55%
2(ii): Information Supporting the ROI	44		ROI - comparable to a post tax WACC	Corporate tax rate (%)	28%
2(ii): Information Supporting the ROI	45		<b>ROI - comparable to a post tax WACC</b>		6.16%

Commerce Commission Information Disclosure Template

**2(iii): Information Supporting the Monthly ROI**

Section	Row	Context	Category1	Category2	Opening RIV	Line charge revenue   (\$000)	Expenses cash outflow   (\$000)	Assets commissioned   (\$000)	Asset disposals   (\$000)	Other regulated income   (\$000)	Monthly net cash outflows   (\$000)
2(iii): Information Supporting the monthly ROI	50		<b>Opening RIV</b>		N/A						
2(iii): Information Supporting the monthly ROI	51		Opening RIV	Month 1							-
2(iii): Information Supporting the monthly ROI	52		Opening RIV	Month 2							-
2(iii): Information Supporting the monthly ROI	53		Opening RIV	Month 3							-
2(iii): Information Supporting the monthly ROI	54		Opening RIV	Month 4							-
2(iii): Information Supporting the monthly ROI	55		Opening RIV	Month 5							-
2(iii): Information Supporting the monthly ROI	56		Opening RIV	Month 6							-
2(iii): Information Supporting the monthly ROI	57		Opening RIV	Month 7							-
2(iii): Information Supporting the monthly ROI	58		Opening RIV	Month 8							-
2(iii): Information Supporting the monthly ROI	59		Opening RIV	Month 9							-
2(iii): Information Supporting the monthly ROI	60		Opening RIV	Month 10							-
2(iii): Information Supporting the monthly ROI	61		Opening RIV	Month 11							-
2(iii): Information Supporting the monthly ROI	62		Opening RIV	Month 12							-
2(iii): Information Supporting the monthly ROI	63		<b>Total</b>								-
2(iii): Information Supporting the monthly ROI	64		<b>Tax Payments</b>								N/A
2(iii): Information Supporting the monthly ROI	65		<b>Term credit spread differential allowance</b>								N/A
2(iii): Information Supporting the monthly ROI	66		<b>Closing RIV</b>								N/A
2(iii): Information Supporting the monthly ROI	67		<b>Monthly ROI - comparable to a vanilla WACC</b>								N/A
2(iii): Information Supporting the monthly ROI	68		<b>Monthly ROI - comparable to a post tax WACC</b>								N/A

**2(iv): Year-End ROI Rates for Comparison Purposes**

Section	Row	Context	Category1	Category2	%
2(iv): Year-end ROI rates for comparison purposes	73		<b>Year-end ROI - comparable to a vanilla WACC</b>		6.52%
2(iv): Year-end ROI rates for comparison purposes	74		<b>Year-end ROI - comparable to a post tax WACC</b>		5.86%

\* these year-end ROI values are comparable to the ROI reported in pre 2012 disclosures by GDBs and do not represent the Commission's current view on ROI.

**2(v): Financial Incentives and Wash-Ups**

Section	Row	Context	Category1	Category2	(\$000)
2(v): Financial Incentives and Wash-Ups	79		<b>Financial incentives</b>		
2(v): Financial Incentives and Wash-Ups	80		Input methodology claw-back		
2(v): Financial Incentives and Wash-Ups	81		CPP application recoverable costs		
2(v): Financial Incentives and Wash-Ups	82		Reopener event allowance		
2(v): Financial Incentives and Wash-Ups	83		Capex wash-up adjustment		297
2(v): Financial Incentives and Wash-Ups	84		CPP Urgent project allowance		
2(v): Financial Incentives and Wash-Ups	85		Other CPP wash-ups		
2(v): Financial Incentives and Wash-Ups	86		<b>Wash-up costs</b>		297

**2(v): Financial Incentives and Wash-Ups**

Section	Row	Context	Category1	Category2	%
2(v): Financial Incentives and Wash-Ups	90		<b>Impact of financial incentives on ROI</b>		-
2(v): Financial Incentives and Wash-Ups	91		<b>Impact of wash-up costs on ROI</b>		0.05%

Commerce Commission Information Disclosure Template

**SCHEDULE 3: REPORT ON REGULATORY PROFIT**

**3(i): Regulatory Profit**

Section	Row	Context	Category1	Category2	(\$000)
3(i): Regulatory Profit	4	<b>Income</b>		Line charge revenue	67,793
3(i): Regulatory Profit	5	<i>plus</i>	Income	Gains / (losses) on asset disposals	89
3(i): Regulatory Profit	6	<i>plus</i>	Income	Other regulated income (other than gains / (losses) on asset disposals)	1,880
3(i): Regulatory Profit	7		<b>Total regulatory income</b>		69,762
3(i): Regulatory Profit	8	<i>less</i>	<b>Expenses</b>	Operational expenditure	20,407
3(i): Regulatory Profit	9	<i>less</i>	Expenses	Pass-through and recoverable costs excluding financial incentives and wash-ups	2,071
3(i): Regulatory Profit	10		<b>Operating surplus / (deficit)</b>		47,284
3(i): Regulatory Profit	11	<i>less</i>	Operating surplus / (deficit)	Total depreciation	26,820
3(i): Regulatory Profit	12	<i>plus</i>	Operating surplus / (deficit)	Total revaluations	13,816
3(i): Regulatory Profit	13		<b>Regulatory profit / (loss) before tax</b>		34,280
3(i): Regulatory Profit	14	<i>less</i>	Regulatory profit / (loss) before tax	Term credit spread differential allowance	384
3(i): Regulatory Profit	15	<i>less</i>	Regulatory profit / (loss) before tax	Regulatory tax allowance	5,515
3(i): Regulatory Profit	16		<b>Regulatory profit / (loss) including financial incentives and wash-ups</b>		28,381

**3(ii): Pass-through and recoverable costs excluding financial incentives and wash-ups**

Section	Row	Context	Category1	Category2	(\$000)
3(ii): Pass-through and Recoverable Costs excluding Financial Incentives and Wash-Ups	21	<b>Pass through costs</b>		Rates	1,281
3(ii): Pass-through and Recoverable Costs excluding Financial Incentives and Wash-Ups	22	Pass through costs		Commerce Act levies	700
3(ii): Pass-through and Recoverable Costs excluding Financial Incentives and Wash-Ups	23	Pass through costs		Industry Levies	80
3(ii): Pass-through and Recoverable Costs excluding Financial Incentives and Wash-Ups	24	Pass through costs		CPP specified pass-through costs	
3(ii): Pass-through and Recoverable Costs excluding Financial Incentives and Wash-Ups	25	<b>Recoverable costs excluding financial incentives and wash-ups</b>		FENZ levies	9
3(ii): Pass-through and Recoverable Costs excluding Financial Incentives and Wash-Ups	26	Recoverable costs excluding financial incentives and wash-ups		Other CPP recoverable costs excluding financial incentives and wash-ups	
3(ii): Pass-through and Recoverable Costs excluding Financial Incentives and Wash-Ups	27	<b>Pass-through and recoverable costs excluding financial incentives and wash-ups</b>			2,071

**3(iv): Merger and Acquisition Expenditure**

Section	Row	Context	Category1	Category2	(\$000)
3(iv): Merger and Acquisition Expenditure	32	Merger and acquisition expenditure			

*\*Provide commentary on the benefits of merger and acquisition expenditure to the gas transmission business, including required disclosures in accordance with section 2.7, in Schedule 14 (Mandatory Explanatory Notes)*

**3(v): Other Disclosures**

Section	Row	Context	Category1	Category2	(\$000)
3(v): Other Disclosures	37	Self-insurance allowance			

# Commerce Commission Information Disclosure Template

## SCHEDULE 4: REPORT ON VALUE OF THE REGULATORY ASSET BASE (ROLLED FORWARD)

### 4(i): Regulatory Asset Base Value (Rolled Forward)

Section	Row	Context	Category1	Category2	RAB CY-4 (\$000)	RAB CY-3 (\$000)	RAB CY-2 (\$000)	RAB CY-1 (\$000)	RAB CY (\$000)
4(i): Regulatory Asset Base Value (Rolled Forward)	4				388,863	406,139	439,801	457,184	454,818
4(i): Regulatory Asset Base Value (Rolled Forward)	5	less			16,521	15,575	25,501	26,725	26,820
4(i): Regulatory Asset Base Value (Rolled Forward)	6	plus			19,047	29,108	24,551	9,797	13,816
4(i): Regulatory Asset Base Value (Rolled Forward)	7	plus			15,515	21,213	18,939	16,322	14,763
4(i): Regulatory Asset Base Value (Rolled Forward)	8	less			120	(26)	506	312	(89)
4(i): Regulatory Asset Base Value (Rolled Forward)	9	plus							
4(i): Regulatory Asset Base Value (Rolled Forward)	10	plus			(645)	(1,110)	(101)	(1,448)	(797)
4(i): Regulatory Asset Base Value (Rolled Forward)	11				406,139	439,801	457,184	454,818	455,869

### 4(ii): Unallocated Regulatory Asset Base

Section	Row	Context	Category1	Category2	Unallocated RAB* (\$000)	RAB (\$000)
4(ii): Unallocated Regulatory Asset Base	16				547,047	454,818
4(ii): Unallocated Regulatory Asset Base	17	less			40,856	26,820
4(ii): Unallocated Regulatory Asset Base	18	plus			16,580	13,816
4(ii): Unallocated Regulatory Asset Base	19	Assets commissioned (other than below)		Not Required after DY2025	21,658	14,763
4(ii): Unallocated Regulatory Asset Base	20	Assets commissioned out of WUC		Not Required before DY2026		
4(ii): Unallocated Regulatory Asset Base	21	Assets acquired (other than below)		Not Required before DY2026		
4(ii): Unallocated Regulatory Asset Base	22	Assets acquired from a regulated supplier				
4(ii): Unallocated Regulatory Asset Base	23	Assets acquired from a related party				
4(ii): Unallocated Regulatory Asset Base	24	plus			21,658	14,763
4(ii): Unallocated Regulatory Asset Base	25	Asset disposals (other than below)			(89)	(89)
4(ii): Unallocated Regulatory Asset Base	26	Asset disposals to a regulated supplier				
4(ii): Unallocated Regulatory Asset Base	27	Asset disposals to a related party				
4(ii): Unallocated Regulatory Asset Base	28	less			(89)	(89)
4(ii): Unallocated Regulatory Asset Base	29	plus				
4(ii): Unallocated Regulatory Asset Base	30	plus				(797)
4(ii): Unallocated Regulatory Asset Base	31				544,518	455,869

\*The 'unallocated RAB' is the total value of those assets used wholly or partially to provide gas distribution services without any allowance being made for the allocation of costs to services provided by the supplier that are not gas transmission services. The RAB value represents the value of these assets after applying this cost allocation. Neither value

### 4(iii): Calculation of Revaluation Rate and Revaluation of Assets

Section	Row	Context	Category1	Category2   Units	Revaluations
4(iii): Calculation of Revaluation Rate and Revaluation of Assets	37	CPI <sub>t</sub>		index	1,319
4(iii): Calculation of Revaluation Rate and Revaluation of Assets	38	CPI <sub>t-4</sub>		index	1,280
4(iii): Calculation of Revaluation Rate and Revaluation of Assets	39	Revaluation rate (%)		proportion	3.05%

### 4(iii): Calculation of Revaluation Rate and Revaluation of Assets

Section	Row	Context	Category1	Category2	Unallocated RAB (\$000)	RAB (\$000)
4(iii): Calculation of Revaluation Rate and Revaluation of Assets	43				547,047	454,818
4(iii): Calculation of Revaluation Rate and Revaluation of Assets	44	less			2,889	1,376
4(iii): Calculation of Revaluation Rate and Revaluation of Assets	45				544,158	453,442
4(iii): Calculation of Revaluation Rate and Revaluation of Assets	46				16,580	13,816

### 4(iv): Roll Forward of Works Under Construction

Section	Row	Context	Category1	Category2	Category3	Unallocated works under construction	Allocated works under construction
4(iv): Roll Forward of Works Under Construction	51				Not Required after	16,387	5,547
4(iv): Roll Forward of Works Under Construction	52	plus			Not Required after	20,865	14,680
4(iv): Roll Forward of Works Under Construction	53	less			Not Required after	21,658	14,763
4(iv): Roll Forward of Works Under Construction	54	plus			Not Required after DY2025		(98)
4(iv): Roll Forward of Works Under Construction	55				Not Required after	15,593	5,366
4(iv): Roll Forward of Works Under Construction	56				Not Required before DY2026		
4(iv): Roll Forward of Works Under Construction	57				Not Required before DY2026		
4(iv): Roll Forward of Works Under Construction	58				Not Required before DY2026		
4(iv): Roll Forward of Works Under Construction	59				Not Required before DY2026		
4(iv): Roll Forward of Works Under Construction	60	plus			Not Required before	-	-
4(iv): Roll Forward of Works Under Construction	61	less			Not Required before DY2026		
4(iv): Roll Forward of Works Under Construction	62	less			Not Required before DY2026		
4(iv): Roll Forward of Works Under Construction	63	less			Not Required before		
4(iv): Roll Forward of Works Under Construction	64	plus			Not Required before DY2026		
4(iv): Roll Forward of Works Under Construction	65				Not Required before		

# Commerce Commission Information Disclosure Template

## 4(iv): Roll Forward of Works Under Construction

Section	Row	Context	Category1	Category2	Unallocated works under construction	Allocated works under construction
4(iv): Roll Forward of Works Under Construction	70		Highest rate of capitalised finance applied			5.45%

## 4(v): Regulatory Depreciation

Section	Row	Context	Category1	Category2	Unallocated RAB (\$000)	RAB (\$000)
4(v): Regulatory Depreciation	75		Depreciation - standard		25,292	24,863
4(v): Regulatory Depreciation	76		Depreciation - no standard life assets		15,565	1,956
4(v): Regulatory Depreciation	77		Depreciation - modified life assets			
4(v): Regulatory Depreciation	78		Depreciation - alternative depreciation in accordance with CPP			
4(v): Regulatory Depreciation	79		<b>Total depreciation</b>		<b>40,856</b>	<b>26,820</b>

## 4(vi): Disclosure of Changes to Depreciation Profiles

Section	Row	Context	Category1   Asset or assets with changes to depreciation	Category2   Reason for non-standard depreciation (text entry)	Depreciation change for the period (RAB)   (\$000 unless otherwise specified)	Closing RAB value under 'non-standard' depreciation   (\$000 unless otherwise specified)	Closing RAB value under 'standard' depreciation   (\$000 unless otherwise specified)
4(vi): Disclosure of Changes to Depreciation Profiles	84						
4(vi): Disclosure of Changes to Depreciation Profiles	85						
4(vi): Disclosure of Changes to Depreciation Profiles	86						
4(vi): Disclosure of Changes to Depreciation Profiles	87						
4(vi): Disclosure of Changes to Depreciation Profiles	88						
4(vi): Disclosure of Changes to Depreciation Profiles	89						
4(vi): Disclosure of Changes to Depreciation Profiles	90						
4(vi): Disclosure of Changes to Depreciation Profiles	91						

\*Include additional rows if needed

## 4(vii): Disclosure by Asset Category

Section	Row	Context	Category1	Category2	Intermediate pressure main pipelines   (\$000 unless otherwise specified)	Medium pressure main pipelines   (\$000 unless otherwise specified)	Low pressure main pipelines   (\$000 unless otherwise specified)	Service pipe   (\$000 unless otherwise specified)	Stations   (\$000 unless otherwise specified)	Line value   (\$000 unless otherwise specified)	Special crossings   (\$000 unless otherwise specified)	Other network assets   (\$000 unless otherwise specified)	Non-network assets   (\$000 unless otherwise specified)	Total   (\$000 unless otherwise specified)
4(vii): Disclosure by Asset Category	96		<b>Total opening RAB value</b>		50,556	195,840	2,070	133,114	9,281	7,651	1,369	34,505	20,433	454,818
4(vii): Disclosure by Asset Category	97	less	Total depreciation		2,850	12,467	88	7,330	478	331	68	1,051	2,155	26,820
4(vii): Disclosure by Asset Category	98	plus	Total revaluations		1,542	5,962	63	4,053	285	233	42	1,047	588	13,816
4(vii): Disclosure by Asset Category	99	plus	Assets commissioned		926	5,333	-	3,192	1,388	3,597	701	(2,018)	1,642	14,763
4(vii): Disclosure by Asset Category	100	less	Asset disposals		(54)	(13)	(0)	8	(86)	39	-	16	1	(89)
4(vii): Disclosure by Asset Category	101	plus	Lost and found assets adjustment		-	-	-	-	-	-	-	-	-	-
4(vii): Disclosure by Asset Category	102	plus	Adjustment resulting from asset allocation		-	-	-	-	-	-	-	-	(797)	(797)
4(vii): Disclosure by Asset Category	103	plus	Asset category transfers		(1)	1	-	-	-	-	-	-	-	(0)
4(vii): Disclosure by Asset Category	104		<b>Total closing RAB value</b>		<b>50,226</b>	<b>194,682</b>	<b>2,045</b>	<b>133,021</b>	<b>10,562</b>	<b>11,111</b>	<b>2,044</b>	<b>32,467</b>	<b>19,711</b>	<b>455,869</b>
4(vii): Disclosure by Asset Category	105	(years)	<b>Asset Life</b>	Weighted average remaining asset life	21.4	22.7	26.0	26.0	27.4	34.9	30.9	28.9	22.3	
4(vii): Disclosure by Asset Category	106	(years)	<b>Asset Life</b>	Weighted average expected total asset life	57.7	47.0	45.7	46.3	35.1	46.0	37.6	31.9	31.6	

**SCHEDULE 5a: REPORT ON REGULATORY TAX ALLOWANCE**

**5a(i): Regulatory Tax Allowance**

Section	Row	Context	Category1	Category2	(\$000)
5a(i): Regulatory Tax Allowance	4		<b>Regulatory profit / (loss) before tax</b>		34,280
5a(i): Regulatory Tax Allowance	5	plus	Regulatory profit / (loss) before tax	Income not included in regulatory profit / (loss) before tax but taxable	129
5a(i): Regulatory Tax Allowance	6		Regulatory profit / (loss) before tax	Expenditure or loss in regulatory profit / (loss) before tax but not deductible	112
5a(i): Regulatory Tax Allowance	7		Regulatory profit / (loss) before tax	Amortisation of initial differences in asset values	2,278
5a(i): Regulatory Tax Allowance	8		Regulatory profit / (loss) before tax	Amortisation of revaluations	6,721
5a(i): Regulatory Tax Allowance	9		Regulatory profit / (loss) before tax		9,239
5a(i): Regulatory Tax Allowance	10	less	Regulatory profit / (loss) before tax	Total revaluations	13,816
5a(i): Regulatory Tax Allowance	11		Regulatory profit / (loss) before tax	Income included in regulatory profit / (loss) before tax but not taxable	-
5a(i): Regulatory Tax Allowance	12		Regulatory profit / (loss) before tax	Expenditure or loss deductible but not in regulatory profit / (loss) before tax	21
5a(i): Regulatory Tax Allowance	13		Regulatory profit / (loss) before tax	Notional deductible interest	9,985
5a(i): Regulatory Tax Allowance	14		Regulatory profit / (loss) before tax		23,822
5a(i): Regulatory Tax Allowance	15		<b>Regulatory taxable income</b>		19,697
5a(i): Regulatory Tax Allowance	16	less	Regulatory taxable income	Utilised tax losses	
5a(i): Regulatory Tax Allowance	17		Regulatory taxable income	Regulatory net taxable income	19,697
5a(i): Regulatory Tax Allowance	18		<b>Regulatory tax allowance</b>		5,515

\*Workings to be provided in Schedule 14

**5a(i): Regulatory Tax Allowance**

Section	Row	Context	Category1	Category2	%
5a(i): Regulatory Tax Allowance	23		Regulatory taxable income	Corporate tax rate (%)	28%

**5a(ii): Disclosure of Permanent Differences**

In Schedule 14, Box 5, provide descriptions and workings of items recorded in the asterisked categories in Schedule 5a(i).

**5a(iii): Amortisation of Initial Difference in Asset Values**

Section	Row	Context	Category1	Category2	(\$000)
5a(iii): Reconciliation of Tax Losses	32		Opening unamortised initial differences in asset values		56,947
5a(iii): Reconciliation of Tax Losses	33	less	Amortisation of initial differences in asset values		2,278
5a(iii): Reconciliation of Tax Losses	34	plus	Adjustment for unamortised initial differences in assets acquired		-
5a(iii): Reconciliation of Tax Losses	35	less	Adjustment for unamortised initial differences in assets disposed		(26)
5a(iii): Reconciliation of Tax Losses	36		Closing unamortised initial differences in asset values		54,695
5a(iii): Reconciliation of Tax Losses	37		Opening weighted average remaining useful life of relevant assets (years)		25

**5a(iv): Amortisation of Revaluations**

Section	Row	Context	Category1	Category2	(\$000)
5a(iv): Amortisation of Revaluations	42		Opening sum of RAB values without revaluations		347,388
5a(iv): Amortisation of Revaluations	43		Adjusted depreciation		20,099
5a(iv): Amortisation of Revaluations	44		Total depreciation		26,820
5a(iv): Amortisation of Revaluations	45		Amortisation of revaluations		6,721

**5a(v): Reconciliation of Tax Losses**

Section	Row	Context	Category1	Category2	(\$000)
5a(v): Reconciliation of Tax Losses	50		<b>Opening tax losses</b>		

Commerce Commission Information Disclosure Template

5a(v): Reconciliation of Tax Losses	51 <i>plus</i>	Current period tax losses	
5a(v): Reconciliation of Tax Losses	52 <i>less</i>	Utilised tax losses	
5a(v): Reconciliation of Tax Losses	53	<b>Closing tax losses</b>	0

**5a(vi): Calculation of Deferred Tax Balance**

Section	Row	Context	Category1	Category2	(\$000)
5a(vi): Calculation of Deferred Tax Balance	58		<b>Opening deferred tax</b>		(31,204)
5a(vi): Calculation of Deferred Tax Balance	59 <i>plus</i>		Tax effect of adjusted depreciation		5,628
5a(vi): Calculation of Deferred Tax Balance	60 <i>less</i>		Tax effect of tax depreciation		5,020
5a(vi): Calculation of Deferred Tax Balance	61 <i>plus</i>		Tax effect of other temporary differences*		111
5a(vi): Calculation of Deferred Tax Balance	62 <i>less</i>		Tax effect of amortisation of initial differences in asset values		638
5a(vi): Calculation of Deferred Tax Balance	63 <i>plus</i>		Deferred tax balance relating to assets acquired in the disclosure year		-
5a(vi): Calculation of Deferred Tax Balance	64 <i>less</i>		Deferred tax balance relating to assets disposed in the disclosure year		45
5a(vi): Calculation of Deferred Tax Balance	65 <i>plus</i>		Deferred tax cost allocation adjustment		(73)
5a(vi): Calculation of Deferred Tax Balance	66		<b>Closing deferred tax</b>		(31,241)

**5a(vii): Disclosure of Temporary Differences**

In Schedule 14, Box 6, provide descriptions and workings of items recorded in the asterisked category in Schedule 5a(vi) (Tax effect of other temporary differences).

**5a(viii): Regulatory Tax Asset Base Roll-Forward**

Section	Row	Context	Category1	Category2	(\$000)
5a(viii): Regulatory Tax Asset Base Roll-Forward	75		<b>Opening sum of regulatory tax asset values</b>		171,990
5a(viii): Regulatory Tax Asset Base Roll-Forward	76 <i>less</i>		Tax depreciation		17,928
5a(viii): Regulatory Tax Asset Base Roll-Forward	77 <i>plus</i>		Regulatory tax asset value of assets commissioned		14,622
5a(viii): Regulatory Tax Asset Base Roll-Forward	78 <i>less</i>		Regulatory tax asset value of asset disposals		71
5a(viii): Regulatory Tax Asset Base Roll-Forward	79 <i>plus</i>		Lost and found assets adjustment		-
5a(viii): Regulatory Tax Asset Base Roll-Forward	80 <i>plus</i>		Adjustments resulting from asset allocation		(1,056)
5a(viii): Regulatory Tax Asset Base Roll-Forward	81 <i>plus</i>		Other adjustments to the RAB tax value		-
5a(viii): Regulatory Tax Asset Base Roll-Forward	82		<b>Closing sum of regulatory tax asset values</b>		167,557

**SCHEDULE 5b: REPORT ON RELATED PARTY TRANSACTIONS**

**5b(i): Summary—Related Party Transactions**

Section	Row	Context	Category1	Category2	(\$000)
5b(i): Summary—Related Party Transactions	4		<b>Total regulatory income</b>		1,435
5b(i): Summary—Related Party Transactions	5		<b>Market value of asset disposals</b>		
5b(i): Summary—Related Party Transactions	6		Service interruptions, incidents and emergencies		-
5b(i): Summary—Related Party Transactions	7		Routine and corrective maintenance and inspection		-
5b(i): Summary—Related Party Transactions	8		Asset replacement and renewal (opex)		-
5b(i): Summary—Related Party Transactions	9		<b>Network opex</b>		-
5b(i): Summary—Related Party Transactions	10		Business support		1,030
5b(i): Summary—Related Party Transactions	11		System operations and network support		-
5b(i): Summary—Related Party Transactions	12		<b>Operational expenditure</b>		1,030
5b(i): Summary—Related Party Transactions	13		Consumer connection		-
5b(i): Summary—Related Party Transactions	14		System growth		-
5b(i): Summary—Related Party Transactions	15		Asset replacement and renewal (capex)		-
5b(i): Summary—Related Party Transactions	16		Asset relocations		-
5b(i): Summary—Related Party Transactions	17		Quality of supply		-
5b(i): Summary—Related Party Transactions	18		Legislative and regulatory		-
5b(i): Summary—Related Party Transactions	19		Other reliability, safety and environment		-
5b(i): Summary—Related Party Transactions	20		<b>Expenditure on non-network assets</b>		-
5b(i): Summary—Related Party Transactions	21		<b>Expenditure on assets</b>		-
5b(i): Summary—Related Party Transactions	22		Cost of financing		
5b(i): Summary—Related Party Transactions	23		Value of capital contributions		
5b(i): Summary—Related Party Transactions	24		Value of vested assets		
5b(i): Summary—Related Party Transactions	25		<b>Capital expenditure</b>		-
5b(i): Summary—Related Party Transactions	26		<b>Total expenditure</b>		1,030
5b(i): Summary—Related Party Transactions	27		<b>Other related party transactions</b>		

**5b(iii): Total Opex and Capex Related Party Transactions**

Section	Row	Context	Category1   Name of related party	Category2   Nature of opex or capex service provided	Total value of transactions (\$000)
5b(iii): Total Opex and Capex Related Party Transactions	32		Personnel and Director Fees	Business support	1,030
5b(iii): Total Opex and Capex Related Party Transactions	33				-
5b(iii): Total Opex and Capex Related Party Transactions	34		<b>Total value of related party transactions</b>		1,030

**SCHEDULE 5c: REPORT ON TERM CREDIT SPREAD DIFFERENTIAL ALLOWANCE**

**5c(i): Qualifying Debt (may be Commission only)**

**5c(ii): Attribution of Term Credit Spread Differential**

Section	Row	Context	Category1	Category2	%
5c(ii): Attribution of Term Credit Spread Differential	28		<b>Gross term credit spread differential</b>		5,068
5c(ii): Attribution of Term Credit Spread Differential	29		Total book value of interest bearing debt leverage		2,526,681
5c(ii): Attribution of Term Credit Spread Differential	30		Leverage		42%
5c(ii): Attribution of Term Credit Spread Differential	31		Average opening and closing RAB values		455,343
5c(ii): Attribution of Term Credit Spread Differential	32		<b>Attribution Rate (%)</b>		8%
5c(ii): Attribution of Term Credit Spread Differential	33		<b>Term credit spread differential allowance</b>		384

Commerce Commission Information Disclosure Template

**SCHEDULE 5d: REPORT ON COST ALLOCATIONS**

**5d(i): Operating Cost Allocations**

Section	Row	Context	Category1	Category2	Value allocated (\$000)   Arm's length deduction	Value allocated (\$000)   Gas distribution services	Value allocated (\$000)   Non-gas distribution services	Value allocated (\$000)   Total	Value allocated (\$000)   OVABA A allocation increase
5d(i): Operating Cost Allocations	4		Service interruptions, incidents and emergencies	Directly attributable		728			
5d(i): Operating Cost Allocations	5		Service interruptions, incidents and emergencies	Not directly attributable				-	
5d(i): Operating Cost Allocations	6		<b>Total attributable to regulated service</b>			728			
5d(i): Operating Cost Allocations	7		Routine and corrective maintenance and inspection	Directly attributable		3,789			
5d(i): Operating Cost Allocations	8		Routine and corrective maintenance and inspection	Not directly attributable				-	
5d(i): Operating Cost Allocations	9		<b>Total attributable to regulated service</b>			3,789			
5d(i): Operating Cost Allocations	10		Asset replacement and renewal	Directly attributable		4,391			
5d(i): Operating Cost Allocations	11		Asset replacement and renewal	Not directly attributable				-	
5d(i): Operating Cost Allocations	12		<b>Total attributable to regulated service</b>			4,391			
5d(i): Operating Cost Allocations	13		System operations and network support	Directly attributable		3,289			
5d(i): Operating Cost Allocations	14		System operations and network support	Not directly attributable			4,895	5,589	
5d(i): Operating Cost Allocations	15		<b>Total attributable to regulated service</b>			3,983			
5d(i): Operating Cost Allocations	16		Business support	Directly attributable		779			
5d(i): Operating Cost Allocations	17		Business support	Not directly attributable		6,737	42,804	49,541	
5d(i): Operating Cost Allocations	18		<b>Total attributable to regulated service</b>			7,517			
5d(i): Operating Cost Allocations	19		<b>Operating costs directly attributable</b>			12,976			
5d(i): Operating Cost Allocations	20		<b>Operating costs not directly attributable</b>			7,431	47,699	55,130	
5d(i): Operating Cost Allocations	21		<b>Operational expenditure</b>			20,407			

**5d(ii): Other Cost Allocations**

Section	Row	Context	Category1	Category2	Value allocated (\$000s)   Arm's length deduction	Value allocated (\$000s)   Gas distribution services	Value allocated (\$000s)   Non-gas distribution services	Value allocated (\$000s)   Total	Value allocated (\$000s)   OVABA A allocation increase
5d(ii): Other Cost Allocations	26	Pass through and recoverable costs	Pass through costs	Directly attributable		2,313			
5d(ii): Other Cost Allocations	27	Pass through and recoverable costs	Pass through costs	Not directly attributable		80	252	333	
5d(ii): Other Cost Allocations	28	Pass through and recoverable costs	<b>Pass through costs</b>			2,393			
5d(ii): Other Cost Allocations	29	Pass through and recoverable costs	Recoverable costs	Directly attributable					
5d(ii): Other Cost Allocations	30	Pass through and recoverable costs	Recoverable costs	Not directly attributable		9	-	9	
5d(ii): Other Cost Allocations	31	Pass through and recoverable costs	<b>Recoverable costs</b>			9			

**5d(iii): Changes in Cost Allocations\* †**

Section	Row	Context	Category1	Category2	Cost category	Original allocator or line items	New allocator or line items	Rational for change	Original allocation   CY-1   (\$000)	New allocation   CY-1   (\$000)	Difference   CY-1   (\$000)	Original allocation   Current Year (CY)   (\$000)	New allocation   Current Year (CY)   (\$000)	Difference   Current Year (CY)   (\$000)
5d(iii): Changes in Cost Allocations* †	36		Change in cost allocation 1								-			-
5d(iii): Changes in Cost Allocations* †	37		Change in cost allocation 2								-			-
5d(iii): Changes in Cost Allocations* †	38		Change in cost allocation 3								-			-

\* a change in cost allocation must be completed for each allocator or component change that has occurred in the disclosure year. A movement in an allocator metric is not a change in allocator or component.

† include additional rows if needed

**SCHEDULE 5e: REPORT ON ASSET ALLOCATIONS**

**5e(i): Regulated Service Asset Values**

Section	Row	Context	Category1	Category2	Value allocated (\$000s)   Gas Distribution services
5e(i): Regulated Service Asset Values	4	Main Pipes		Directly attributable	246,954
5e(i): Regulated Service Asset Values	5	Main Pipes		Not directly attributable	
5e(i): Regulated Service Asset Values	6	Main Pipes		<b>Total attributable to regulated service</b>	246,954
5e(i): Regulated Service Asset Values	7	Service pipe		Directly attributable	133,021
5e(i): Regulated Service Asset Values	8	Service pipe		Not directly attributable	
5e(i): Regulated Service Asset Values	9	Service pipe		<b>Total attributable to regulated service</b>	133,021
5e(i): Regulated Service Asset Values	10	Stations		Directly attributable	10,562
5e(i): Regulated Service Asset Values	11	Stations		Not directly attributable	
5e(i): Regulated Service Asset Values	12	Stations		<b>Total attributable to regulated service</b>	10,562
5e(i): Regulated Service Asset Values	13	Line valve		Directly attributable	11,111
5e(i): Regulated Service Asset Values	14	Line valve		Not directly attributable	
5e(i): Regulated Service Asset Values	15	Line valve		<b>Total attributable to regulated service</b>	11,111
5e(i): Regulated Service Asset Values	16	Special crossings		Directly attributable	2,044
5e(i): Regulated Service Asset Values	17	Special crossings		Not directly attributable	
5e(i): Regulated Service Asset Values	18	Special crossings		<b>Total attributable to regulated service</b>	2,044
5e(i): Regulated Service Asset Values	19	Other network assets		Directly attributable	32,467
5e(i): Regulated Service Asset Values	20	Other network assets		Not directly attributable	
5e(i): Regulated Service Asset Values	21	Other network assets		<b>Total attributable to regulated service</b>	32,467
5e(i): Regulated Service Asset Values	22	Non-network assets		Directly attributable	8,698
5e(i): Regulated Service Asset Values	23	Non-network assets		Not directly attributable	11,013
5e(i): Regulated Service Asset Values	24			<b>Total attributable to regulated service</b>	19,711
5e(i): Regulated Service Asset Values	25			<b>Regulated service asset value directly attributable</b>	444,856
5e(i): Regulated Service Asset Values	26			<b>Regulated service asset value not directly attributable</b>	11,013
5e(i): Regulated Service Asset Values	27			<b>Total closing RAB value</b>	455,869

**5e(ii): Changes in Asset Allocations\* †**

Section	Row	Context	Category1	Category2	Asset category	Original allocator or line items	New allocator or line items	Rationale for change	Original allocation CY-1   (\$000)	New allocation CY-1   (\$000)	Difference CY-1   (\$000)	Original allocation Current Year (CY)   (\$000)	New allocation Current Year (CY)   (\$000)	Difference Current Year (CY)   (\$000)
5e(ii): Changes in Asset Allocations* †	32	Change in cost allocation 1									-			-
5e(ii): Changes in Asset Allocations* †	33	Change in cost allocation 2									-			-
5e(ii): Changes in Asset Allocations* †	34	Change in cost allocation 3									-			-

\* a change in asset allocation must be completed for each allocator or component change that has occurred in the disclosure year. A movement in an allocator metric is not a change in allocator or component.

† include additional rows if needed

**SCHEDULE 6a: REPORT ON CAPITAL EXPENDITURE FOR THE DISCLOSURE YEAR**

**6a(i): Expenditure on Assets**

Section	Row	Context	Category1	Category2	(\$000)
6a(i): Expenditure on Assets	4		Network asset	Consumer connection	3,723
6a(i): Expenditure on Assets	5		Network asset	System growth	562
6a(i): Expenditure on Assets	6		Network asset	Asset replacement and renewal	7,630
6a(i): Expenditure on Assets	7		Network asset	Asset relocations	201
6a(i): Expenditure on Assets	8		Reliability, safety and environment	Quality of supply	19
6a(i): Expenditure on Assets	9		Reliability, safety and environment	Legislative and regulatory	-
6a(i): Expenditure on Assets	10		Reliability, safety and environment	Other reliability, safety and environment	1,897
6a(i): Expenditure on Assets	11		<b>Total reliability, safety and environment</b>		1,915
6a(i): Expenditure on Assets	12		<b>Expenditure on network assets</b>		14,032
6a(i): Expenditure on Assets	13		Expenditure on non-network assets		910
6a(i): Expenditure on Assets	14		<b>Expenditure on Assets</b>		14,942
6a(i): Expenditure on Assets	15 <i>plus</i>		Capital expenditure	Cost of financing	228
6a(i): Expenditure on Assets	16 <i>less</i>		Capital expenditure	Value of capital contributions	491
6a(i): Expenditure on Assets	17 <i>plus</i>		Capital expenditure	Value of vested assets	
6a(i): Expenditure on Assets	18		<b>Capital expenditure</b>		14,680

**6a(ii): Subcomponents of Expenditure on Assets (where known)**

Section	Row	Context	Category1	Category2	(\$000)
6a(ii): Subcomponents of Expenditure on Assets (where know	23		Expenditure on subcomponents	Research and development	

**6a(iii): Consumer Connection**

Section	Row	Context	Category1	Category2	(\$000)
6a(iii): Consumer Connection	28	<i>Consumer types defined by GDB*</i>	Residential/Small Commercial		2,680
6a(iii): Consumer Connection	29	<i>Consumer types defined by GDB*</i>	Commercial		1,042
6a(iii): Consumer Connection	30	<i>Consumer types defined by GDB*</i>	Industrial		-
6a(iii): Consumer Connection	31		<b>Consumer connection expenditure</b>		3,723
6a(iii): Consumer Connection	32	<i>less</i>	Capital contributions funding consumer connection expenditure		242
6a(iii): Consumer Connection	33		<b>Consumer connection less capital contributions</b>		3,481

*\*include additional rows if needed*

Commerce Commission Information Disclosure Template

**6a(iv): System Growth and Asset Replacement and Renewal**

Section	Row	Context	Category1	Category2	System Growth   (\$000)	Asset Replacement and Renewal   (\$000)
6a(iv): System Growth and Asset Replacement and Renewal	39		Intermediate pressure	Main pipe	9	-
6a(iv): System Growth and Asset Replacement and Renewal	40		Intermediate pressure	Service pipe	-	-
6a(iv): System Growth and Asset Replacement and Renewal	41		Intermediate pressure	Stations	-	1,145
6a(iv): System Growth and Asset Replacement and Renewal	42		Intermediate pressure	Line valve	-	82
6a(iv): System Growth and Asset Replacement and Renewal	43		Intermediate pressure	Special crossings	-	462
6a(iv): System Growth and Asset Replacement and Renewal	44		<b>Intermediate pressure - total</b>		9	1,690
6a(iv): System Growth and Asset Replacement and Renewal	45		Medium pressure	Main pipe	553	2,824
6a(iv): System Growth and Asset Replacement and Renewal	46		Medium pressure	Service pipe	-	1,406
6a(iv): System Growth and Asset Replacement and Renewal	47		Medium pressure	Stations	-	62
6a(iv): System Growth and Asset Replacement and Renewal	48		Medium pressure	Line valve	-	5
6a(iv): System Growth and Asset Replacement and Renewal	49		Medium pressure	Special crossings	-	5
6a(iv): System Growth and Asset Replacement and Renewal	50		<b>Medium pressure - total</b>		553	4,303
6a(iv): System Growth and Asset Replacement and Renewal	51		Low pressure	Main pipe	-	490
6a(iv): System Growth and Asset Replacement and Renewal	52		Low pressure	Service pipe	-	300
6a(iv): System Growth and Asset Replacement and Renewal	53		Low pressure	Line valve	-	91
6a(iv): System Growth and Asset Replacement and Renewal	54		Low pressure	Special crossings	-	344
6a(iv): System Growth and Asset Replacement and Renewal	55		<b>Low pressure - total</b>		-	1,225
6a(iv): System Growth and Asset Replacement and Renewal	56		Other network assets	Monitoring and control systems	-	11
6a(iv): System Growth and Asset Replacement and Renewal	57		Other network assets	Cathodic protection systems	-	347
6a(iv): System Growth and Asset Replacement and Renewal	58		Other network assets	Other assets (other than above)	-	55
6a(iv): System Growth and Asset Replacement and Renewal	59		<b>Other network assets - total</b>		-	412
6a(iv): System Growth and Asset Replacement and Renewal	60		<b>System growth and asset replacement and renewal expenditure</b>		562	7,630
6a(iv): System Growth and Asset Replacement and Renewal	61	less	Capital contributions funding system growth and asset replacement and renewal		86	-
6a(iv): System Growth and Asset Replacement and Renewal	62		<b>System growth and asset replacement and renewal less capital contributions</b>		476	7,630

**6a(v): Asset Relocations**

Section	Row	Context	Category1	Category2	(\$000)
6a(v): Asset Relocations	67	Project or programme*	TPR-Waitara Roundabout		173
6a(v): Asset Relocations	68		All other projects or programmes - asset relocations		29
6a(v): Asset Relocations	69		<b>Asset relocations expenditure</b>		201
6a(v): Asset Relocations	70	less	Capital contributions funding asset relocations		163
6a(v): Asset Relocations	71		<b>Asset relocations less capital contributions</b>		39

\*include additional rows if needed

Commerce Commission Information Disclosure Template

**6a(vi): Quality of Supply**

Section	Row	Context	Category1	Category2	(\$000)
6a(vi): Quality of Supply	77	Project or programme*			
6a(vi): Quality of Supply	78		All other projects or programmes - Quality of supply		19
6a(vi): Quality of Supply	79		<b>Quality of supply expenditure</b>		19
6a(vi): Quality of Supply	80	less	Capital contributions funding quality of supply		
6a(vi): Quality of Supply	81		<b>Quality of supply less capital contributions</b>		19

\*include additional rows if needed

**6a(vii): Legislative and Regulatory**

Section	Row	Context	Category1	Category2	(\$000)
6a(vii): Legislative and Regulatory	87	Project or programme*			
6a(vii): Legislative and Regulatory	88		All other projects or programmes - legislative and regulatory		
6a(vii): Legislative and Regulatory	89		<b>Legislative and regulatory expenditure</b>		-
6a(vii): Legislative and Regulatory	90	less	Capital contributions funding legislative and regulatory		
6a(vii): Legislative and Regulatory	91		<b>Legislative and regulatory less capital contributions</b>		-

\*include additional rows if needed

**6a(viii): Other Reliability, Safety and Environment**

Section	Row	Context	Category1	Category2	(\$000)
6a(viii): Other Reliability, Safety and Environment	97	Project or programme*	Isolation Plan & Resilience		1,455
6a(viii): Other Reliability, Safety and Environment	98		All other projects or programmes - other reliability, safety and environment		442
6a(viii): Other Reliability, Safety and Environment	99		<b>Other reliability, safety and environment expenditure</b>		1,897
6a(viii): Other Reliability, Safety and Environment	100	less	Capital contributions funding other reliability, safety and environment		-
6a(viii): Other Reliability, Safety and Environment	101		<b>Other reliability, safety and environment less capital contributions</b>		1,897

\*include additional rows if needed

**6a(ix): Non-Network Assets**

Section	Row	Context	Category1   Routine expenditure	Category2	(\$000)
6a(ix): Non-Network Assets	107	Project or programme*	Various Office Alterations		207
6a(ix): Non-Network Assets	108	Project or programme*	Enterprise Asset Management System		186
6a(ix): Non-Network Assets	109	Project or programme*	Refurbishment of Tararua Building NP		101
6a(ix): Non-Network Assets	110		All other projects or programmes - routine expenditure		357
6a(ix): Non-Network Assets	111		<b>Routine expenditure</b>		852

\* include additional rows if needed

**6a(ix): Non-Network Assets**

Section	Row	Context	Category1   Atypical expenditure	Category2	(\$000)
6a(ix): Non-Network Assets	116				
6a(ix): Non-Network Assets	117		All other projects or programmes - atypical expenditure		59
6a(ix): Non-Network Assets	118		<b>Atypical expenditure</b>		59
6a(ix): Non-Network Assets	119		<b>Expenditure on non-network assets</b>		910

## SCHEDULE 6b: REPORT ON OPERATIONAL EXPENDITURE FOR THE DISCLOSURE YEAR

### 6b(i): Operational Expenditure

Section	Row	Context	Category1	Category2	(\$000)
6b(i): Operational Expenditure	4	Network opex		Service interruptions, incidents and emergencies	728
6b(i): Operational Expenditure	5	Network opex		Routine and corrective maintenance and inspection	3,789
6b(i): Operational Expenditure	6	Network opex		Asset replacement and renewal	4,391
6b(i): Operational Expenditure	7		<b>Network opex</b>		8,908
6b(i): Operational Expenditure	8	Non-network opex		System operations and network support	3,983
6b(i): Operational Expenditure	9	Non-network opex		Business support	7,517
6b(i): Operational Expenditure	10		<b>Non-network opex</b>		11,500
6b(i): Operational Expenditure	11		<b>Operational expenditure</b>		20,407

### 6b(ii): Subcomponents of Operational Expenditure (where known)

Section	Row	Context	Category1	Category2	(\$000)
6b(ii): Subcomponents of Operational Expenditure (where know	16	Expenditure on subcomponents		Research and development	-
6b(ii): Subcomponents of Operational Expenditure (where know	17	Expenditure on subcomponents		Insurance	135

**SCHEDULE 7: COMPARISON OF FORECASTS TO ACTUAL EXPENDITURE**

**7(i): Revenue**

Section	Row	Context	Category1	Category2	Target (\$000) <sup>1</sup>	Actual (\$000)	% variance
7(i): Revenue	4	Line charge revenue			70,442	67,793	(4%)

**7(ii): Expenditure on Assets**

Section	Row	Context	Category1	Category2	Forecast (\$000) <sup>2</sup>	Actual (\$000)	% variance
7(ii): Expenditure on Assets	9	Network asset	Consumer connection		4,570	3,723	(19%)
7(ii): Expenditure on Assets	10	Network asset	System growth		877	562	(36%)
7(ii): Expenditure on Assets	11	Network asset	Asset replacement and renewal		8,245	7,630	(7%)
7(ii): Expenditure on Assets	12	Network asset	Asset relocations		238	201	(15%)
7(ii): Expenditure on Assets	13	Reliability, safety and environment	Quality of supply		25	19	(24%)
7(ii): Expenditure on Assets	14	Reliability, safety and environment	Legislative and regulatory		-	-	-
7(ii): Expenditure on Assets	15	Reliability, safety and environment	Other reliability, safety and environment		1,716	1,897	11%
7(ii): Expenditure on Assets	16	<b>Total reliability, safety and environment</b>			1,741	1,915	10%
7(ii): Expenditure on Assets	17	<b>Expenditure on network assets</b>			15,671	14,032	(10%)
7(ii): Expenditure on Assets	18	Expenditure on non-network assets			2,618	910	(65%)
7(ii): Expenditure on Assets	19	<b>Expenditure on assets</b>			18,289	14,942	(18%)

**7(iii): Operational Expenditure**

Section	Row	Context	Category1	Category2	Forecast (\$000) <sup>2</sup>	Actual (\$000)	% variance
7(iii): Operational Expenditure	24	Network opex	Service interruptions, incidents and emergencies		737	728	(1%)
7(iii): Operational Expenditure	25	Network opex	Routine and corrective maintenance and inspection		3,834	3,789	(1%)
7(iii): Operational Expenditure	26	Network opex	Asset replacement and renewal		2,761	4,391	59%
7(iii): Operational Expenditure	27	<b>Network opex</b>			7,332	8,908	21%
7(iii): Operational Expenditure	28	Non-network opex	System operations and network support		4,097	3,983	(3%)
7(iii): Operational Expenditure	29	Non-network opex	Business support		7,796	7,517	(4%)
7(iii): Operational Expenditure	30	<b>Non-network opex</b>			11,893	11,500	(3%)
7(iii): Operational Expenditure	31	<b>Operational expenditure</b>			19,225	20,407	6%

Commerce Commission Information Disclosure Template

**7(iv): Subcomponents of Expenditure on Assets (where known)**

Section	Row	Context	Category1	Category2	Forecast (\$000) <sup>2</sup>	Actual (\$000)	% variance
7(iv): Subcomponents of Operational Expenditure (where known)	36	Expenditure on subcomponents		Research and development		-	-

**7(v): Subcomponents of Operational Expenditure (where known)**

Section	Row	Context	Category1	Category2	Forecast (\$000) <sup>2</sup>	Actual (\$000)	% variance
7(v): Subcomponents of Operational Expenditure (where known)	41	Expenditure on subcomponents		Research and development	45	-	(100.00%)
7(v): Subcomponents of Operational Expenditure (where known)	42	Expenditure on subcomponents		Insurance	42	135	221.20%

<sup>1</sup> From the nominal dollar target revenue for the pricing year disclosed under clause 2.4.3(3) of this determination

<sup>2</sup> From the CY+1 nominal dollar expenditure forecasts disclosed in accordance with clause 2.6.6 for the forecast period starting at the beginning of the disclosure year (the second to last disclosure of Schedules 11a and 11b)

**SCHEDULE 8: REPORT ON BILLED QUANTITIES AND LINE CHARGE REVENUES**

<b>Network/ Sub-Network Name</b>	Powerco Limited
----------------------------------	-----------------

**8(i): Billed quantities by price component**

Section	Row	Context	Category1  Consumer group name or price category code	Category1  Consumer type or types (eg, residential, commercial, etc.)	Standard or non-standard consumer group (specify)	Average no. of ICPs in disclosure year	Quantity of gas delivered (TJ)	Billed quantities by price component	Billed quantities by price component2
8(i): Billed quantities by price component	4		Billed quantities by price component	Price component				Fixed	Variable
8(i): Billed quantities by price component	5		Billed quantities by price component	Unit Charging basis (eg, days, GJ, etc.)				Days	GJ
8(i): Billed quantities by price component	6	G06		Residential	Standard	26,912	293	-	293,126
8(i): Billed quantities by price component	7	G11		Residential / Small Commercial	Standard	82,930	2,511	30,269,450	2,510,580
8(i): Billed quantities by price component	8	G12		Commercial	Standard	1,857	418	677,623	418,337
8(i): Billed quantities by price component	9	G14		Commercial	Standard	602	478	219,730	478,194
8(i): Billed quantities by price component	10	G16		Commercial	Standard	278	541	101,470	541,083
8(i): Billed quantities by price component	11	G18		Commercial	Standard	45	144	16,425	144,324
8(i): Billed quantities by price component	12	G30		Commercial	Non-Standard	115	373	32,537	373,425
8(i): Billed quantities by price component	13	G40		Industrial	Non-Standard	96	3,086	30,547	3,086,418
8(i): Billed quantities by price component	14		<b>Standard consumer totals</b>			112,624	4,386	31,284,698	4,385,644
8(i): Billed quantities by price component	15		<b>Non-standard consumer totals</b>			210	3,460	63,084	3,459,844
8(i): Billed quantities by price component	16		<b>Total for all consumers</b>			112,834	7,845	31,347,782	7,845,488

\*Add extra rows for additional consumer groups or price category codes as necessary

**8(ii): Line charge revenues (\$000) by price component**

Section	Row	Context	Category1  Consumer group name or price category code	Category2  Consumer type or types (eg, residential, commercial, etc.)	Standard or non-standard consumer group (specify)	Total line charge revenue in disclosure year	Notional revenue foregone from posted discounts (if applicable)	Line charge revenues (\$000) by price component	Line charge revenues (\$000) by price component2
8(ii): Line charge revenues (\$000) by price component	21		Line charge revenues (\$000) by price component	Price component				Fixed	Variable
8(ii): Line charge revenues (\$000) by price component	22		Line charge revenues (\$000) by price component	Rate (eg, \$ per day, \$ per GJ, etc.)				\$ per day	\$ per GJ
8(ii): Line charge revenues (\$000) by price component	23	G06		Residential	Standard	\$7,516	-	-	7,516
8(ii): Line charge revenues (\$000) by price component	24	G11		Residential / Small Commercial	Standard	\$41,054	-	26,801	14,252
8(ii): Line charge revenues (\$000) by price component	25	G12		Commercial	Standard	\$3,630	-	1,336	2,295
8(ii): Line charge revenues (\$000) by price component	26	G14		Commercial	Standard	\$3,967	-	1,697	2,271
8(ii): Line charge revenues (\$000) by price component	27	G16		Commercial	Standard	\$3,566	-	1,107	2,459
8(ii): Line charge revenues (\$000) by price component	28	G18		Commercial	Standard	\$841	-	285	555
8(ii): Line charge revenues (\$000) by price component	29	G30		Commercial	Non-Standard	\$1,619	-	545	1,074
8(ii): Line charge revenues (\$000) by price component	30	G40		Industrial	Non-Standard	\$5,601	-	2,076	3,525
8(ii): Line charge revenues (\$000) by price component	31		<b>Standard consumer totals</b>			\$60,573	-	\$31,226	\$29,347
8(ii): Line charge revenues (\$000) by price component	32		<b>Non-standard consumer totals</b>			\$7,220	-	\$2,620	\$4,599
8(ii): Line charge revenues (\$000) by price component	33		<b>Total for all consumers</b>			\$67,793	-	\$33,846	\$33,946

Add extra rows for additional consumer groups or price category codes as necessary

**SCHEDULE 8: REPORT ON BILLED QUANTITIES AND LINE CHARGE REVENUES**

Network/ Sub-Network Name	Central
---------------------------	---------

**8(i): Billed quantities by price component**

Section	Row	Context	Category1   Consumer group name or price category code	Category1   Consumer type or types (eg, residential, commercial, etc.)	Standard or non-standard consumer group (specify)	Average no. of ICPs in disclosure year	Quantity of gas delivered (TJ)	Billed quantities by price component	Billed quantities by price component2
8(i): Billed quantities by price component	4		Billed quantities by price component	Price component				Fixed	Variable
8(i): Billed quantities by price component	5		Billed quantities by price component	Unit Charging basis (eg, days, GJ, etc.)				Days	GJ
8(i): Billed quantities by price component	6		G06	Residential	Standard	12,811	137	-	136,733
8(i): Billed quantities by price component	7		G11	Residential / Small Commercial	Standard	32,359	849	11,811,035	849,149
8(i): Billed quantities by price component	8		G12	Commercial	Standard	765	192	279,043	192,089
8(i): Billed quantities by price component	9		G14	Commercial	Standard	314	269	114,610	269,249
8(i): Billed quantities by price component	10		G16	Commercial	Standard	160	317	58,400	317,484
8(i): Billed quantities by price component	11		G18	Commercial	Standard	26	99	9,308	98,877
8(i): Billed quantities by price component	12		G30	Commercial	Non-Standard	22	133	5,629	132,569
8(i): Billed quantities by price component	13		G40	Industrial	Non-Standard	66	2,496	22,862	2,495,684
8(i): Billed quantities by price component	14		<b>Standard consumer totals</b>			46,434	1,864	12,272,395	1,863,581
8(i): Billed quantities by price component	15		<b>Non-standard consumer totals</b>			88	2,628	28,491	2,628,253
8(i): Billed quantities by price component	16		<b>Total for all consumers</b>			46,522	4,492	12,300,886	4,491,834

\*Add extra rows for additional consumer groups or price category codes as necessary

**8(ii): Line charge revenues (\$000) by price component**

Section	Row	Context	Category1   Consumer group name or price category code	Category2   Consumer type or types (eg, residential, commercial, etc.)	Standard or non-standard consumer group (specify)	Total line charge revenue in disclosure year	Notional revenue foregone from posted discounts (if applicable)	Line charge revenues (\$000) by price component	Line charge revenues (\$000) by price component2
8(ii): Line charge revenues (\$000) by price component	21		Line charge revenues (\$000) by price component	Price component				Fixed	Variable
8(ii): Line charge revenues (\$000) by price component	22		Line charge revenues (\$000) by price component	Rate (eg, \$ per day, \$ per GJ, etc.)				\$ per day	\$ per GJ
8(ii): Line charge revenues (\$000) by price component	23		G06	Residential	Standard	3,343	-	-	3,343
8(ii): Line charge revenues (\$000) by price component	24		G11	Residential / Small Commercial	Standard	14,778	-	10,401	4,376
8(ii): Line charge revenues (\$000) by price component	25		G12	Commercial	Standard	1,543	-	660	883
8(ii): Line charge revenues (\$000) by price component	26		G14	Commercial	Standard	1,713	-	732	981
8(ii): Line charge revenues (\$000) by price component	27		G16	Commercial	Standard	1,682	-	493	1,189
8(ii): Line charge revenues (\$000) by price component	28		G18	Commercial	Standard	471	-	131	340
8(ii): Line charge revenues (\$000) by price component	29		G30	Commercial	Non-Standard	538	-	155	383
8(ii): Line charge revenues (\$000) by price component	30		G40	Industrial	Non-Standard	4,352	-	1,744	2,608
8(ii): Line charge revenues (\$000) by price component	31		<b>Standard consumer totals</b>			\$23,528	-	\$12,417	\$11,111
8(ii): Line charge revenues (\$000) by price component	32		<b>Non-standard consumer totals</b>			\$4,890	-	\$1,899	\$2,991
8(ii): Line charge revenues (\$000) by price component	33		<b>Total for all consumers</b>			\$28,418	-	\$14,316	\$14,102

Add extra rows for additional consumer groups or price category codes as necessary

**SCHEDULE 8: REPORT ON BILLED QUANTITIES AND LINE CHARGE REVENUES**

Network/ Sub-Network Name	Lower
---------------------------	-------

**8(i): Billed quantities by price component**

Section	Row	Context	Category1   Consumer group name or price category code	Category1   Consumer type or types (eg, residential, commercial, etc.)	Standard or non-standard consumer group (specify)	Average no. of ICPs in disclosure year	Quantity of gas delivered (TJ)	Billed quantities by price component	Billed quantities by price component2
8(i): Billed quantities by price component	4		Billed quantities by price component	Price component				Fixed	Variable
8(i): Billed quantities by price component	5		Billed quantities by price component	Unit Charging basis (eg, days, GJ, etc.)				Days	GJ
8(i): Billed quantities by price component	6		G06	Residential	Standard	14,101	156	-	156,392
8(i): Billed quantities by price component	7		G11	Residential / Small Commercial	Standard	50,571	1,661	18,458,415	1,661,431
8(i): Billed quantities by price component	8		G12	Commercial	Standard	1,092	226	398,580	226,248
8(i): Billed quantities by price component	9		G14	Commercial	Standard	288	209	105,120	208,946
8(i): Billed quantities by price component	10		G16	Commercial	Standard	118	224	43,070	223,600
8(i): Billed quantities by price component	11		G18	Commercial	Standard	20	45	7,118	45,447
8(i): Billed quantities by price component	12		G30	Commercial	Non-Standard	93	241	26,908	240,856
8(i): Billed quantities by price component	13		G40	Industrial	Non-Standard	30	591	7,685	590,735
8(i): Billed quantities by price component	14		<b>Standard consumer totals</b>			66,190	2,522	19,012,303	2,522,063
8(i): Billed quantities by price component	15		<b>Non-standard consumer totals</b>			123	832	34,593	831,591
8(i): Billed quantities by price component	16		<b>Total for all consumers</b>			66,312	3,354	19,046,896	3,353,654

\*Add extra rows for additional consumer groups or price category codes as necessary

**8(ii): Line charge revenues (\$000) by price component**

Section	Row	Context	Category1   Consumer group name or price category code	Category2   Consumer type or types (eg, residential, commercial, etc.)	Standard or non-standard consumer group (specify)	Total line charge revenue in disclosure year	Notional revenue foregone from posted discounts (if applicable)	Line charge revenues (\$000) by price component	Line charge revenues (\$000) by price component2
8(ii): Line charge revenues (\$000) by price component	21		Line charge revenues (\$000) by price component	Price component				Fixed	Variable
8(ii): Line charge revenues (\$000) by price component	22		Line charge revenues (\$000) by price component	Rate (eg, \$ per day, \$ per GJ, etc.)				\$ per day	\$ per GJ
8(ii): Line charge revenues (\$000) by price component	23		G06	Residential	Standard	4,174	-	-	4,174
8(ii): Line charge revenues (\$000) by price component	24		G11	Residential / Small Commercial	Standard	26,268	-	16,400	9,867
8(ii): Line charge revenues (\$000) by price component	25		G12	Commercial	Standard	2,087	-	676	1,411
8(ii): Line charge revenues (\$000) by price component	26		G14	Commercial	Standard	2,255	-	965	1,290
8(ii): Line charge revenues (\$000) by price component	27		G16	Commercial	Standard	1,885	-	614	1,271
8(ii): Line charge revenues (\$000) by price component	28		G18	Commercial	Standard	371	-	154	216
8(ii): Line charge revenues (\$000) by price component	29		G30	Commercial	Non-Standard	1,081	-	390	691
8(ii): Line charge revenues (\$000) by price component	30		G40	Industrial	Non-Standard	1,255	-	331	923
8(ii): Line charge revenues (\$000) by price component	31		<b>Standard consumer totals</b>			\$37,039	-	\$18,809	\$18,230
8(ii): Line charge revenues (\$000) by price component	32		<b>Non-standard consumer totals</b>			\$2,336	-	\$721	\$1,615
8(ii): Line charge revenues (\$000) by price component	33		<b>Total for all consumers</b>			\$39,375	-	\$19,530	\$19,845

**SCHEDULE 9a: ASSET REGISTER**

Network / Sub- Network Name	Powerco Limited
--------------------------------	--------------------

**9a: Asset Register**

Section	Row	Context	Category1   Operating Pressure	Category2   Asset Category	Category3   Asset Class	Category4   Units	Items at start of year (quantity)	Items at end of year (quantity)	Net change	Data accuracy (1-4)
9a: Asset Register	4		Intermediate Pressure	Main pipe	IP PE main pipe	km	4	4	0	3
9a: Asset Register	5		Intermediate Pressure	Main pipe	IP steel main pipe	km	256	256	(0)	3
9a: Asset Register	6		Intermediate Pressure	Main pipe	IP other main pipe	km	0	0	-	3
9a: Asset Register	7		Intermediate Pressure	Service pipe	IP PE service pipe	km	1	1	0	3
9a: Asset Register	8		Intermediate Pressure	Service pipe	IP steel service pipe	km	10	10	(0)	3
9a: Asset Register	9		Intermediate Pressure	Service pipe	IP other service pipe	km	1	1	(0)	3
9a: Asset Register	10		Intermediate Pressure	Stations	Intermediate pressure DRS	No.	123	121	(2)	3
9a: Asset Register	11		Intermediate Pressure	Line valve	IP line valves	No.	639	652	13	3
9a: Asset Register	12		Intermediate Pressure	Special crossings	IP crossings	No.	98	100	2	3
9a: Asset Register	13		Medium Pressure	Main pipe	MP PE main pipe	km	3,681	3,691	10	3
9a: Asset Register	14		Medium Pressure	Main pipe	MP steel main pipe	km	146	146	(0)	3
9a: Asset Register	15		Medium Pressure	Main pipe	MP other main pipe	km	28	28	0	3
9a: Asset Register	16		Medium Pressure	Service pipe	MP PE service pipe	km	2,054	2,058	4	3
9a: Asset Register	17		Medium Pressure	Service pipe	MP steel service pipe	km	47	47	(0)	3
9a: Asset Register	18		Medium Pressure	Service pipe	MP other service pipe	km	50	51	0	3
9a: Asset Register	19		Medium Pressure	Stations	Medium pressure DRS	No.	56	55	(1)	3
9a: Asset Register	20		Medium Pressure	Line valve	MP line valves	No.	1,580	1,304	(276)	3
9a: Asset Register	21		Medium Pressure	Special crossings	MP special crossings	No.	256	254	(2)	3
9a: Asset Register	22		Low Pressure	Main pipe	LP PE main pipe	km	3	3	(0)	3
9a: Asset Register	23		Low Pressure	Main pipe	LP steel main pipe	km	3	3	-	3
9a: Asset Register	24		Low Pressure	Main pipe	LP other main pipe	km	1	1	-	3
9a: Asset Register	25		Low Pressure	Service pipe	LP PE service pipe	km	4	3	(0)	3
9a: Asset Register	26		Low Pressure	Service pipe	LP steel service pipe	km	0	0	0	3
9a: Asset Register	27		Low Pressure	Service pipe	LP other service pipe	km	1	1	(0)	3
9a: Asset Register	28		Low Pressure	Line valve	LP line valves	No.	35	453	418	3
9a: Asset Register	29		Low Pressure	Special crossings	LP special crossings	No.	-	-	-	3
9a: Asset Register	30		All	Monitoring and control systems	Remote terminal units	No.	135	115	(20)	3
9a: Asset Register	31		All	Cathodic protection systems	Cathodic protection	No.	55	30	(25)	3

**SCHEDULE 9a: ASSET REGISTER**

Network / Sub- Network Name	Central
--------------------------------	---------

**9a: Asset Register**

Section	Row	Context	Category1   Operating Pressure	Category2   Asset Category	Category3   Asset Class	Category4   Units	Items at start of year (quantity)	Items at end of year (quantity)	Net change	Data accuracy (1-4)
9a: Asset Register	4		Intermediate Pressure	Main pipe	IP PE main pipe	km	2	2	(0)	3
9a: Asset Register	5		Intermediate Pressure	Main pipe	IP steel main pipe	km	103	102	(0)	3
9a: Asset Register	6		Intermediate Pressure	Main pipe	IP other main pipe	km	3	-	(3)	3
9a: Asset Register	7		Intermediate Pressure	Service pipe	IP PE service pipe	km	0	0	0	3
9a: Asset Register	8		Intermediate Pressure	Service pipe	IP steel service pipe	km	3	3	0	3
9a: Asset Register	9		Intermediate Pressure	Service pipe	IP other service pipe	km	0	0	-	3
9a: Asset Register	10		Intermediate Pressure	Stations	Intermediate pressure DRS	No.	53	52	(1)	3
9a: Asset Register	11		Intermediate Pressure	Line valve	IP line valves	No.	133	141	8	3
9a: Asset Register	12		Intermediate Pressure	Special crossings	IP crossings	No.	56	55	(1)	3
9a: Asset Register	13		Medium Pressure	Main pipe	MP PE main pipe	km	1,923	1,928	5	3
9a: Asset Register	14		Medium Pressure	Main pipe	MP steel main pipe	km	131	132	0	3
9a: Asset Register	15		Medium Pressure	Main pipe	MP other main pipe	km	16	16	0	3
9a: Asset Register	16		Medium Pressure	Service pipe	MP PE service pipe	km	1,087	1,090	3	3
9a: Asset Register	17		Medium Pressure	Service pipe	MP steel service pipe	km	36	36	0	3
9a: Asset Register	18		Medium Pressure	Service pipe	MP other service pipe	km	28	28	0	3
9a: Asset Register	19		Medium Pressure	Stations	Medium pressure DRS	No.	35	32	(3)	3
9a: Asset Register	20		Medium Pressure	Line valve	MP line valves	No.	873	883	10	3
9a: Asset Register	21		Medium Pressure	Special crossings	MP special crossings	No.	159	157	(2)	3
9a: Asset Register	22		Low Pressure	Main pipe	LP PE main pipe	km	3	3	-	3
9a: Asset Register	23		Low Pressure	Main pipe	LP steel main pipe	km	3	3	-	3
9a: Asset Register	24		Low Pressure	Main pipe	LP other main pipe	km	0	0	-	3
9a: Asset Register	25		Low Pressure	Service pipe	LP PE service pipe	km	3	3	(0)	3
9a: Asset Register	26		Low Pressure	Service pipe	LP steel service pipe	km	0	0	0	3
9a: Asset Register	27		Low Pressure	Service pipe	LP other service pipe	km	1	1	(0)	3
9a: Asset Register	28		Low Pressure	Line valve	LP line valves	No.	14	14	-	3
9a: Asset Register	29		Low Pressure	Special crossings	LP special crossings	No.	-	-	-	3
9a: Asset Register	30		All	Monitoring and control systems	Remote terminal units	No.	63	56	(7)	3
9a: Asset Register	31		All	Cathodic protection systems	Cathodic protection	No.	37	22	(15)	3

**SCHEDULE 9a: ASSET REGISTER**

Network / Sub-Network Name	Lower
----------------------------	-------

**9a: Asset Register**

Section	Row	Context	Category1   Operating Pressure	Category2   Asset Category	Category3   Asset Class	Category4   Units	Items at start of year (quantity)	Items at end of year (quantity)	Net change	Data accuracy (1-4)
9a: Asset Register	4		Intermediate Pressure	Main pipe	IP PE main pipe	km	2	2	0	3
9a: Asset Register	5		Intermediate Pressure	Main pipe	IP steel main pipe	km	154	154	(0)	3
9a: Asset Register	6		Intermediate Pressure	Main pipe	IP other main pipe	km	0	0	-	3
9a: Asset Register	7		Intermediate Pressure	Service pipe	IP PE service pipe	km	0	0	0	3
9a: Asset Register	8		Intermediate Pressure	Service pipe	IP steel service pipe	km	7	7	(0)	3
9a: Asset Register	9		Intermediate Pressure	Service pipe	IP other service pipe	km	1	1	(0)	3
9a: Asset Register	10		Intermediate Pressure	Stations	Intermediate pressure DRS	No.	70	69	(1)	3
9a: Asset Register	11		Intermediate Pressure	Line valve	IP line valves	No.	506	511	5	3
9a: Asset Register	12		Intermediate Pressure	Special crossings	IP crossings	No.	42	45	3	3
9a: Asset Register	13		Medium Pressure	Main pipe	MP PE main pipe	km	1,758	1,763	5	3
9a: Asset Register	14		Medium Pressure	Main pipe	MP steel main pipe	km	15	14	(0)	3
9a: Asset Register	15		Medium Pressure	Main pipe	MP other main pipe	km	12	12	(0)	3
9a: Asset Register	16		Medium Pressure	Service pipe	MP PE service pipe	km	967	968	2	3
9a: Asset Register	17		Medium Pressure	Service pipe	MP steel service pipe	km	11	11	(0)	3
9a: Asset Register	18		Medium Pressure	Service pipe	MP other service pipe	km	23	23	0	3
9a: Asset Register	19		Medium Pressure	Stations	Medium pressure DRS	No.	21	23	2	3
9a: Asset Register	20		Medium Pressure	Line valve	MP line valves	No.	707	421	(286)	3
9a: Asset Register	21		Medium Pressure	Special crossings	MP special crossings	No.	97	97	-	3
9a: Asset Register	22		Low Pressure	Main pipe	LP PE main pipe	km	0	0	(0)	3
9a: Asset Register	23		Low Pressure	Main pipe	LP steel main pipe	km	0	0	-	3
9a: Asset Register	24		Low Pressure	Main pipe	LP other main pipe	km	1	1	-	3
9a: Asset Register	25		Low Pressure	Service pipe	LP PE service pipe	km	1	1	(0)	3
9a: Asset Register	26		Low Pressure	Service pipe	LP steel service pipe	km	0	0	-	3
9a: Asset Register	27		Low Pressure	Service pipe	LP other service pipe	km	0	0	-	3
9a: Asset Register	28		Low Pressure	Line valve	LP line valves	No.	21	439	418	3
9a: Asset Register	29		Low Pressure	Special crossings	LP special crossings	No.	-	-	-	3
9a: Asset Register	30		All	Monitoring and control systems	Remote terminal units	No.	72	59	(13)	3
9a: Asset Register	31		All	Cathodic protection systems	Cathodic protection	No.	18	8	(10)	3



Commerce Commission Information Disclosure Template

SCHEDULE 9b: ASSET AGE PROFILE

Network / Sub-  
Network Name  
Central

9b: Asset Age Profile

Section	Row	Context	Category1 Operating Pressure	Category2 Asset category	Category3 Asset Class	Category 4 Units	Number of assets at disclosure year end by installation date   pre-1970	1970	1975	1980	1985	1990	1995	2000	2001	2002	2003	2004	2005	2006	2007	2008	2009	2010	2011	2012	2013	2014	2015	2016	2017	2018	2019	2020	2021	2022	2023	2024	2025	No. with age unknown	Items at end of year (quantity)	No. with default dates	Data accuracy (1-4)	
								-1974	-1979	-1984	1989	-1994	-1999																															
9b: Asset Age Profile	4	Intermediate Pressure	Main pipe	IP PE main pipe	km	-	-	-	-	-	0	-	-	-	-	-	-	-	-	-	-	-	-	1	-	-	-	-	1	-	-	0	0	0	-	0	-	-	2	3				
9b: Asset Age Profile	5	Intermediate Pressure	Main pipe	IP steel main pipe	km	2	12	7	56	17	7	0	0	0	0	-	0	0	-	0	0	-	0	0	0	0	0	0	0	0	0	0	0	0	0	0	0	0	-	0	-	102	3	
9b: Asset Age Profile	6	Intermediate Pressure	Main pipe	IP other main pipe	km	-	-	-	-	-	-	-	-	-	-	-	-	-	-	-	-	-	-	-	-	-	-	-	-	-	-	-	-	-	-	-	-	-	-	-	-	3		
9b: Asset Age Profile	7	Intermediate Pressure	Service pipe	IP PE service pipe	km	-	0	-	-	0	-	0	-	-	-	-	-	-	-	-	-	-	-	-	-	-	-	-	0	-	-	-	-	-	-	-	-	-	-	-	-	0	3	
9b: Asset Age Profile	8	Intermediate Pressure	Service pipe	IP steel service pipe	km	0	0	1	1	1	0	0	0	-	0	-	0	-	0	-	0	0	-	0	0	-	-	-	-	0	-	-	-	-	-	0	0	-	-	-	-	3	3	
9b: Asset Age Profile	9	Intermediate Pressure	Service pipe	IP other service pipe	km	-	-	-	0	-	-	-	-	-	-	-	-	-	-	-	-	-	-	-	-	-	-	-	-	-	-	-	-	-	-	-	-	-	-	-	-	0	3	
9b: Asset Age Profile	10	Intermediate Pressure	Stations	Intermediate pressure DRS	No.	-	-	-	1	21	10	-	-	2	-	1	2	-	1	-	1	-	1	-	1	-	1	1	-	1	-	3	3	1	1	-	1	-	-	-	52	3		
9b: Asset Age Profile	11	Intermediate Pressure	Line valve	IP line valves	No.	-	-	-	5	64	21	-	-	-	-	1	3	1	-	2	-	7	2	4	3	-	-	4	2	1	5	7	2	1	3	-	3	-	-	-	141	3		
9b: Asset Age Profile	12	Intermediate Pressure	Special crossings	IP crossings	No.	-	4	4	39	5	3	-	-	-	-	-	-	-	-	-	-	-	-	-	-	-	-	-	-	-	-	-	-	-	-	-	-	-	-	-	55	3		
9b: Asset Age Profile	13	Medium Pressure	Main pipe	MP PE main pipe	km	2	24	65	376	445	289	269	34	28	20	14	18	34	28	33	21	11	13	14	16	9	11	13	16	16	22	26	14	10	18	8	8	2	-	-	1,928	3		
9b: Asset Age Profile	14	Medium Pressure	Main pipe	MP steel main pipe	km	6	52	24	19	21	5	4	1	0	-	0	0	0	-	0	0	0	0	0	-	0	0	-	0	0	-	0	-	0	-	0	0	0	-	-	132	3		
9b: Asset Age Profile	15	Medium Pressure	Main pipe	MP other main pipe	km	0	1	3	4	6	1	1	0	0	0	-	0	0	-	0	0	0	0	-	-	-	-	-	-	-	-	-	-	-	-	-	-	-	-	-	-	16	3	
9b: Asset Age Profile	16	Medium Pressure	Service pipe	MP PE service pipe	km	2	18	67	165	212	190	128	16	11	11	10	11	11	12	12	9	9	12	9	11	10	10	11	14	15	20	19	16	17	13	10	6	3	-	-	1,090	3		
9b: Asset Age Profile	17	Medium Pressure	Service pipe	MP steel service pipe	km	1	8	12	6	6	2	1	0	0	0	0	0	0	0	0	0	0	0	0	-	0	0	-	0	0	0	0	0	0	0	-	-	-	-	-	36	3		
9b: Asset Age Profile	18	Medium Pressure	Service pipe	MP other service pipe	km	0	1	1	6	12	7	0	0	0	0	0	1	0	0	0	0	0	0	0	-	-	-	-	-	-	-	0	0	0	-	0	-	-	-	-	28	3		
9b: Asset Age Profile	19	Medium Pressure	Stations	Medium pressure DRS	No.	-	-	-	21	4	1	-	-	-	-	1	-	-	-	-	-	-	-	-	-	-	-	2	-	-	1	-	-	-	-	2	-	-	-	-	32	3		
9b: Asset Age Profile	20	Medium Pressure	Line valve	MP line valves	No.	3	4	9	23	351	118	9	1	-	7	8	7	9	14	10	11	12	21	33	24	7	11	9	11	17	16	32	8	16	17	29	21	7	8	-	-	883	3	
9b: Asset Age Profile	21	Medium Pressure	Special crossings	MP special crossings	No.	1	11	6	32	34	26	12	5	2	2	2	3	2	1	-	2	3	-	1	2	1	-	1	2	2	-	2	-	-	-	1	1	-	-	157	3			
9b: Asset Age Profile	22	Low Pressure	Main pipe	LP PE main pipe	km	-	0	-	0	0	0	0	-	-	-	1	-	-	-	-	1	-	-	-	-	-	0	1	-	0	-	0	-	0	-	0	-	-	-	-	3	3		
9b: Asset Age Profile	23	Low Pressure	Main pipe	LP steel main pipe	km	-	-	0	0	0	3	0	-	-	-	-	-	-	-	-	-	-	-	-	-	-	-	-	-	-	-	-	-	-	-	-	-	-	-	-	-	3	3	
9b: Asset Age Profile	24	Low Pressure	Main pipe	LP other main pipe	km	-	-	-	0	-	0	-	-	-	-	-	-	-	-	-	-	-	-	-	-	-	-	-	-	-	-	-	-	-	-	-	-	-	-	-	-	0	3	
9b: Asset Age Profile	25	Low Pressure	Service pipe	LP PE service pipe	km	0	0	0	-	0	1	1	-	0	0	0	0	-	0	0	-	0	0	0	0	0	0	0	-	0	0	0	0	0	0	0	0	-	-	-	-	3	3	
9b: Asset Age Profile	26	Low Pressure	Service pipe	LP steel service pipe	km	0	-	0	0	0	0	0	-	0	-	-	-	-	-	-	0	-	0	-	0	0	0	-	0	0	0	0	0	0	0	0	-	-	-	-	-	0	3	
9b: Asset Age Profile	27	Low Pressure	Service pipe	LP other service pipe	km	0	-	0	0	0	0	0	-	0	-	-	-	-	-	0	-	0	-	0	-	-	-	-	-	-	-	-	-	-	-	-	-	-	-	-	-	1	3	
9b: Asset Age Profile	28	Low Pressure	Line valve	LP line valves	No.	-	-	-	-	2	2	2	-	-	-	-	-	-	-	-	-	-	-	-	1	-	-	-	-	-	-	-	-	-	-	-	-	-	-	-	-	-	14	3
9b: Asset Age Profile	29	Low Pressure	Special crossings	LP special crossings	No.	-	-	-	-	-	-	-	-	-	-	-	-	-	-	-	-	-	-	-	-	-	-	-	-	-	-	-	-	-	-	-	-	-	-	-	-	-	3	
9b: Asset Age Profile	30	All	Monitoring and control systems	Remote terminal units	No.	-	-	-	-	-	-	-	-	-	-	-	-	-	-	-	-	1	-	11	-	9	18	-	6	1	1	-	-	2	5	1	-	1	-	-	-	56	3	
9b: Asset Age Profile	31	All	Cathodic protection systems	Cathodic protection	No.	-	1	-	5	4	4	2	2	1	-	-	2	-	-	-	-	1	-	-	-	-	-	-	-	-	-	-	-	-	-	-	-	-	-	-	-	22	3	



## SCHEDULE 9c: REPORT ON PIPELINE DATA

<i>Network/ Sub-Network Name</i>	Powerco Limited
----------------------------------	-----------------

### 9c: Pipeline Data

Section	Row	Context	Category1   Network Information (end of year)	Category2	Length (km)	%
9c: Pipeline Data	4		System length by material (defined by GDB)	PE	5,760	91.37%
9c: Pipeline Data	5		System length by material (defined by GDB)	Steel	463	7.34%
9c: Pipeline Data	6		System length by material (defined by GDB)	Other	81	1.28%
9c: Pipeline Data	7		System length by material (defined by GDB)			-
9c: Pipeline Data	8		System length by material (defined by GDB)			-
9c: Pipeline Data	9		System length by material (defined by GDB)			-
9c: Pipeline Data	10		<b>System length</b>		6,304	100.00%

### 9c: Pipeline Data

Section	Row	Context	Category1   Network Information (end of year)	Category2	System length (km) (at year end)	Weighted average pipe diameter (mm)	Number of ICPs (at year end)	Gas conveyed for Persons not involved in the GDB (TJ)
9c: Pipeline Data	14		By operating pressure	Intermediate pressure	271	136	212	1,897
9c: Pipeline Data	15		By operating pressure	Medium pressure	6,021	41	294	15
9c: Pipeline Data	16		By operating pressure	Low pressure	12	49	111,776	5,933
9c: Pipeline Data	17		<b>Total</b>		6,304	45	112,282	7,845

## SCHEDULE 9c: REPORT ON PIPELINE DATA

<i>Network/ Sub-Network Name</i>	Central
----------------------------------	---------

### 9c: Pipeline Data

Section	Row	Context	Category1   Network Information (end of year)	Category2	Length (km)	%
9c: Pipeline Data	4		System length by material (defined by GDB)	PE	3,026	90.41%
9c: Pipeline Data	5		System length by material (defined by GDB)	Steel	277	8.26%
9c: Pipeline Data	6		System length by material (defined by GDB)	Other	45	1.33%
9c: Pipeline Data	7		System length by material (defined by GDB)			-
9c: Pipeline Data	8		System length by material (defined by GDB)			-
9c: Pipeline Data	9		System length by material (defined by GDB)			-
9c: Pipeline Data	10		<b>System length</b>		3,347	100.00%

### 9c: Pipeline Data

Section	Row	Context	Category1   Network Information (end of year)	Category2	System length (km) (at year end)	Weighted average pipe diameter (mm)	Number of ICPs (at year end)	Gas conveyed for Persons not involved in the GDB (TJ)
9c: Pipeline Data	14		By operating pressure	Intermediate pressure	108	133	61	1,430
9c: Pipeline Data	15		By operating pressure	Medium pressure	3,230	39	45,985	3,052
9c: Pipeline Data	16		By operating pressure	Low pressure	10	48	222	10
9c: Pipeline Data	17		<b>Total</b>		3,347	42	46,268	4,492

## SCHEDULE 9c: REPORT ON PIPELINE DATA

<i>Network/ Sub-Network Name</i>	Lower
----------------------------------	-------

### 9c: Pipeline Data

Section	Row	Context	Category1   Network Information (end of year)	Category2	Length (km)	%
9c: Pipeline Data	4		System length by material (defined by GDB)	PE	2,734	92.47%
9c: Pipeline Data	5		System length by material (defined by GDB)	Steel	186	6.30%
9c: Pipeline Data	6		System length by material (defined by GDB)	Other	36	1.23%
9c: Pipeline Data	7		System length by material (defined by GDB)			-
9c: Pipeline Data	8		System length by material (defined by GDB)			-
9c: Pipeline Data	9		System length by material (defined by GDB)			-
9c: Pipeline Data	10		<b>System length</b>		2,957	100.00%

### 9c: Pipeline Data

Section	Row	Context	Category1   Network Information (end of year)	Category2	System length (km) (at year end)	Weighted average pipe diameter (mm)	Number of ICPs (at year end)	Gas conveyed for Persons not involved in the GDB (TJ)
9c: Pipeline Data	14		By operating pressure	Intermediate pressure	163	137	151	467
9c: Pipeline Data	15		By operating pressure	Medium pressure	2,792	43	65,791	2,881
9c: Pipeline Data	16		By operating pressure	Low pressure	2	54	72	5
9c: Pipeline Data	17		<b>Total</b>		2,957	49	66,014	3,354

## SCHEDULE 9d: REPORT ON DEMAND

Network / Sub-Network Name

Powerco Limited

### 9d(i): Consumer Connections

Section	Row	Context	Category1	Category2	Number of connections (ICPs)
9d(i): Consumer Connections	4	Consumer types defined by GDB	Number of ICPs connected in year by consumer type	Residential	556
9d(i): Consumer Connections	5	Consumer types defined by GDB	Number of ICPs connected in year by consumer type	Residential / Small Commercial	59
9d(i): Consumer Connections	6	Consumer types defined by GDB	Number of ICPs connected in year by consumer type	Commercial	-
9d(i): Consumer Connections	7	Consumer types defined by GDB	Number of ICPs connected in year by consumer type		
9d(i): Consumer Connections	8	Consumer types defined by GDB	Number of ICPs connected in year by consumer type		
9d(i): Consumer Connections	9		<b>Total</b>		615

\* include additional rows if needed

### 9d(ii): Gas Delivered

Section	Row	Context	Category1	Category2   Units	Gas delivered
9d(ii): Gas Delivered	15		Number of ICPs at year end	connections	112,282
9d(ii): Gas Delivered	16		Maximum daily load	GJ/day	37,242
9d(ii): Gas Delivered	17		Maximum monthly load	GJ/month	894,496
9d(ii): Gas Delivered	18		Number of directly billed ICPs	at year end	-
9d(ii): Gas Delivered	19		Total gas conveyed	GJ/annum	7,797,751
9d(ii): Gas Delivered	20		Average daily delivery	GJ/day	21,364
9d(ii): Gas Delivered	21		<b>Load factor</b>	proportion	72.65%

## SCHEDULE 9d: REPORT ON DEMAND

Network / Sub-Network Name

Central

### 9d(i): Consumer Connections

Section	Row	Context	Category1	Category2	Number of connections (ICPs)
9d(i): Consumer Connections	4	Consumer types defined by GDB	Number of ICPs connected in year by consumer type	Residential	241
9d(i): Consumer Connections	5	Consumer types defined by GDB	Number of ICPs connected in year by consumer type	Residential / Small Commercial	29
9d(i): Consumer Connections	6	Consumer types defined by GDB	Number of ICPs connected in year by consumer type	Commercial	-
9d(i): Consumer Connections	7	Consumer types defined by GDB	Number of ICPs connected in year by consumer type		
9d(i): Consumer Connections	8	Consumer types defined by GDB	Number of ICPs connected in year by consumer type		
9d(i): Consumer Connections	9		<b>Total</b>		270

\* include additional rows if needed

### 9d(ii): Gas Delivered

Section	Row	Context	Category1	Category2   Units	Gas delivered
9d(ii): Gas Delivered	15		Number of ICPs at year end	connections	46,268
9d(ii): Gas Delivered	16		Maximum daily load	GJ/day	19,298
9d(ii): Gas Delivered	17		Maximum monthly load	GJ/month	463,081
9d(ii): Gas Delivered	18		Number of directly billed ICPs	at year end	-
9d(ii): Gas Delivered	19		Total gas conveyed	GJ/annum	4,472,466
9d(ii): Gas Delivered	20		Average daily delivery	GJ/day	12,253
9d(ii): Gas Delivered	21		<b>Load factor</b>	proportion	80.48%

## SCHEDULE 9d: REPORT ON DEMAND

Network / Sub-Network Name

Lower

### 9d(i): Consumer Connections

Section	Row	Context	Category1	Category2	Number of connections (ICPs)
9d(i): Consumer Connections	4	Consumer types defined by GDB	Number of ICPs connected in year by consumer type	Residential	315
9d(i): Consumer Connections	5	Consumer types defined by GDB	Number of ICPs connected in year by consumer type	Residential / Small Commercial	30
9d(i): Consumer Connections	6	Consumer types defined by GDB	Number of ICPs connected in year by consumer type	Commercial	-
9d(i): Consumer Connections	7	Consumer types defined by GDB	Number of ICPs connected in year by consumer type		
9d(i): Consumer Connections	8	Consumer types defined by GDB	Number of ICPs connected in year by consumer type		
9d(i): Consumer Connections	9		<b>Total</b>		345

\* include additional rows if needed

### 9d(ii): Gas Delivered

Section	Row	Context	Category1	Category2   Units	Gas delivered
9d(ii): Gas Delivered	15		Number of ICPs at year end	connections	66,014
9d(ii): Gas Delivered	16		Maximum daily load	GJ/day	17,944
9d(ii): Gas Delivered	17		Maximum monthly load	GJ/month	431,415
9d(ii): Gas Delivered	18		Number of directly billed ICPs	at year end	-
9d(ii): Gas Delivered	19		Total gas conveyed	GJ/annum	3,325,285
9d(ii): Gas Delivered	20		Average daily delivery	GJ/day	9,110
9d(ii): Gas Delivered	21		<b>Load factor</b>	proportion	64.23%

**SCHEDULE 10a: REPORT ON NETWORK RELIABILITY AND INTERRUPTIONS**

Network / Sub-Network Name	Powerco Limited
----------------------------	-----------------

**10a(i): Interruptions**

Section	Row	Context	Category1	Category2	Actual
10a(i): Interruptions	4	Interruptions by class		Class A (planned interruptions by GTB)	-
10a(i): Interruptions	5	Interruptions by class		Class B (planned interruptions on the network)	223
10a(i): Interruptions	6	Interruptions by class		Class C (unplanned interruptions on the network)	141
10a(i): Interruptions	7	Interruptions by class		Class D (unplanned interruptions by GTB)	-
10a(i): Interruptions	8	Interruptions by class		Class I (unplanned interruptions caused by third party damage)	117
10a(i): Interruptions	9	<b>Total</b>			<b>481</b>
10a(i): Interruptions	10	Number of unplanned outage events (interruptions that affect more than 5 ICPs)		Wellington	-
10a(i): Interruptions	11	Number of unplanned outage events (interruptions that affect more than 5 ICPs)		Hutt Valley and Porirua	-
10a(i): Interruptions	12	Number of unplanned outage events (interruptions that affect more than 5 ICPs)		Taranaki	-
10a(i): Interruptions	13	Number of unplanned outage events (interruptions that affect more than 5 ICPs)		Manawatu & Horowhenua	1
10a(i): Interruptions	14	Number of unplanned outage events (interruptions that affect more than 5 ICPs)		Hawke's Bay	-
10a(i): Interruptions	15	Number of unplanned outage events caused by third party damage (interruptions that affect more than 5 ICPs)		Wellington	-
10a(i): Interruptions	16	Number of unplanned outage events caused by third party damage (interruptions that affect more than 5 ICPs)		Hutt Valley and Porirua	-
10a(i): Interruptions	17	Number of unplanned outage events caused by third party damage (interruptions that affect more than 5 ICPs)		Taranaki	-
10a(i): Interruptions	18	Number of unplanned outage events caused by third party damage (interruptions that affect more than 5 ICPs)		Manawatu & Horowhenua	1
10a(i): Interruptions	19	Number of unplanned outage events caused by third party damage (interruptions that affect more than 5 ICPs)		Hawke's Bay	-

**10a(ii): Reliability**

Section	Row	Context	Category1   Overall reliability	Category2	SAIDI	SAIFI	CAIDI
10a(ii): Reliability	24	Based on the total number of interruptions			624.66	5.193	120.28
10a(ii): Reliability	25	Class I (unplanned interruptions caused by third party damage)			141.92	1.258	112.77
10a(ii): Reliability	26	Class B (planned interruptions on the network)		Wellington	267.67	1.975	135.52
10a(ii): Reliability	27	Class B (planned interruptions on the network)		Hutt Valley and Porirua	701.05	3.037	230.81
10a(ii): Reliability	28	Class B (planned interruptions on the network)		Taranaki	307.52	5.918	51.97
10a(ii): Reliability	29	Class B (planned interruptions on the network)		Manawatu & Horowhenua	6.60	0.098	67.50
10a(ii): Reliability	30	Class B (planned interruptions on the network)		Hawke's Bay	103.83	0.346	300.00
10a(ii): Reliability	31	Class C (unplanned interruptions on the network)		Wellington	98.98	1.018	97.18
10a(ii): Reliability	32	Class C (unplanned interruptions on the network)		Hutt Valley and Porirua	96.43	0.619	155.71
10a(ii): Reliability	33	Class C (unplanned interruptions on the network)		Taranaki	340.06	3.600	94.47
10a(ii): Reliability	34	Class C (unplanned interruptions on the network)		Manawatu & Horowhenua	78.67	1.173	67.08
10a(ii): Reliability	35	Class C (unplanned interruptions on the network)		Hawke's Bay	12.11	0.346	35.00

**SCHEDULE 10a: REPORT ON NETWORK RELIABILITY AND INTERRUPTIONS**

Network / Sub-Network Name	Central
----------------------------	---------

**10a(i): Interruptions**

Section	Row	Context	Category1	Category2	Actual
10a(i): Interruptions	4	Interruptions by class		Class A (planned interruptions by GTB)	-
10a(i): Interruptions	5	Interruptions by class		Class B (planned interruptions on the network)	122
10a(i): Interruptions	6	Interruptions by class		Class C (unplanned interruptions on the network)	97
10a(i): Interruptions	7	Interruptions by class		Class D (unplanned interruptions by GTB)	-
10a(i): Interruptions	8	Interruptions by class		Class I (unplanned interruptions caused by third party damage)	80
10a(i): Interruptions	9	<b>Total</b>			<b>299</b>
10a(i): Interruptions	10	Number of unplanned outage events (interruptions that affect more than 5 ICPs)		Taranaki	-
10a(i): Interruptions	11	Number of unplanned outage events (interruptions that affect more than 5 ICPs)		Manawatu & Horowhenua	1
10a(i): Interruptions	12	Number of unplanned outage events (interruptions that affect more than 5 ICPs)		Hawke's Bay	-
10a(i): Interruptions	13	Number of unplanned outage events (interruptions that affect more than 5 ICPs)			-
10a(i): Interruptions	14	Number of unplanned outage events (interruptions that affect more than 5 ICPs)			-
10a(i): Interruptions	15	Number of unplanned outage events caused by third party damage (interruptions that affect more than 5 ICPs)		Taranaki	-
10a(i): Interruptions	16	Number of unplanned outage events caused by third party damage (interruptions that affect more than 5 ICPs)		Manawatu & Horowhenua	1
10a(i): Interruptions	17	Number of unplanned outage events caused by third party damage (interruptions that affect more than 5 ICPs)		Hawke's Bay	-
10a(i): Interruptions	18	Number of unplanned outage events caused by third party damage (interruptions that affect more than 5 ICPs)			-
10a(i): Interruptions	19	Number of unplanned outage events caused by third party damage (interruptions that affect more than 5 ICPs)			-

**10a(ii): Reliability**

Section	Row	Context	Category1   Overall reliability	Category2	SAIDI	SAIFI	CAIDI
10a(ii): Reliability	24	Based on the total number of interruptions			542.80	6.900	78.67
10a(ii): Reliability	25	Class I (unplanned interruptions caused by third party damage)			208.61	2.107	99.03
10a(ii): Reliability	26	Class B (planned interruptions on the network)		Taranaki	307.52	5.918	51.97
10a(ii): Reliability	27	Class B (planned interruptions on the network)		Manawatu & Horowhenua	6.60	0.098	67.50
10a(ii): Reliability	28	Class B (planned interruptions on the network)		Hawke's Bay	103.83	0.346	300.00
10a(ii): Reliability	29	Class B (planned interruptions on the network)					
10a(ii): Reliability	30	Class B (planned interruptions on the network)					
10a(ii): Reliability	31	Class C (unplanned interruptions on the network)		Taranaki	340.06	3.600	94.47
10a(ii): Reliability	32	Class C (unplanned interruptions on the network)		Manawatu & Horowhenua	78.67	1.173	67.08
10a(ii): Reliability	33	Class C (unplanned interruptions on the network)		Hawke's Bay	12.11	0.346	35.00
10a(ii): Reliability	34	Class C (unplanned interruptions on the network)					
10a(ii): Reliability	35	Class C (unplanned interruptions on the network)					

**SCHEDULE 10a: REPORT ON NETWORK RELIABILITY AND INTERRUPTIONS**

Network / Sub-Network Name	Lower
----------------------------	-------

**10a(i): Interruptions**

Section	Row	Context	Category1	Category2	Actual
10a(i): Interruptions	4	Interruptions by class		Class A (planned interruptions by GTB)	-
10a(i): Interruptions	5	Interruptions by class		Class B (planned interruptions on the network)	101
10a(i): Interruptions	6	Interruptions by class		Class C (unplanned interruptions on the network)	44
10a(i): Interruptions	7	Interruptions by class		Class D (unplanned interruptions by GTB)	-
10a(i): Interruptions	8	Interruptions by class		Class I (unplanned interruptions caused by third party damage)	37
10a(i): Interruptions	9	<b>Total</b>			<b>182</b>
10a(i): Interruptions	10	Number of unplanned outage events (interruptions that affect more than 5 ICPs)		Wellington	-
10a(i): Interruptions	11	Number of unplanned outage events (interruptions that affect more than 5 ICPs)		Hutt Valley and Porirua	-
10a(i): Interruptions	12	Number of unplanned outage events (interruptions that affect more than 5 ICPs)			
10a(i): Interruptions	13	Number of unplanned outage events (interruptions that affect more than 5 ICPs)			
10a(i): Interruptions	14	Number of unplanned outage events (interruptions that affect more than 5 ICPs)			
10a(i): Interruptions	15	Number of unplanned outage events caused by third party damage (interruptions that affect more than 5 ICPs)		Wellington	-
10a(i): Interruptions	16	Number of unplanned outage events caused by third party damage (interruptions that affect more than 5 ICPs)		Hutt Valley and Porirua	-
10a(i): Interruptions	17	Number of unplanned outage events caused by third party damage (interruptions that affect more than 5 ICPs)			
10a(i): Interruptions	18	Number of unplanned outage events caused by third party damage (interruptions that affect more than 5 ICPs)			
10a(i): Interruptions	19	Number of unplanned outage events caused by third party damage (interruptions that affect more than 5 ICPs)			

**10a(ii): Reliability**

Section	Row	Context	Category1   Overall reliability	Category2	SAIDI	SAIFI	CAIDI
10a(ii): Reliability	24	Based on the total number of interruptions			682.09	3.996	170.68
10a(ii): Reliability	25	Class I (unplanned interruptions caused by third party damage)			95.13	0.664	143.36
10a(ii): Reliability	26	Class B (planned interruptions on the network)		Wellington	267.67	1.975	135.52
10a(ii): Reliability	27	Class B (planned interruptions on the network)		Hutt Valley and Porirua	701.05	3.037	230.81
10a(ii): Reliability	28	Class B (planned interruptions on the network)					
10a(ii): Reliability	29	Class B (planned interruptions on the network)					
10a(ii): Reliability	30	Class B (planned interruptions on the network)					
10a(ii): Reliability	31	Class C (unplanned interruptions on the network)		Wellington	98.98	1.018	97.18
10a(ii): Reliability	32	Class C (unplanned interruptions on the network)		Hutt Valley and Porirua	96.43	0.619	155.71
10a(ii): Reliability	33	Class C (unplanned interruptions on the network)					
10a(ii): Reliability	34	Class C (unplanned interruptions on the network)					
10a(ii): Reliability	35	Class C (unplanned interruptions on the network)					

Commerce Commission Information Disclosure Template

**SCHEDULE 10b: REPORT ON NETWORK INTEGRITY AND CONSUMER SERVICE**

Network / Sub-Network Name	Powerco Limited
----------------------------	-----------------

**10b(i): System Condition and Integrity**

Section	Row	Context	Category1	Category2	Actual
10b(i): System Condition and Integrity	4		Number of confirmed public reported gas escapes per system length(escapes/1000 km)	Wellington	70.111
10b(i): System Condition and Integrity	5		Number of confirmed public reported gas escapes per system length(escapes/1000 km)	Hutt Valley and Porirua	153.644
10b(i): System Condition and Integrity	6		Number of confirmed public reported gas escapes per system length(escapes/1000 km)	Taranaki	25.228
10b(i): System Condition and Integrity	7		Number of confirmed public reported gas escapes per system length(escapes/1000 km)	Manawatu & Horowhenua	21.004
10b(i): System Condition and Integrity	8		Number of confirmed public reported gas escapes per system length(escapes/1000 km)	Hawke's Bay	-
10b(i): System Condition and Integrity	9		Number of leaks detected by routine survey per system length(leaks/1000 km)	Wellington	23.652
10b(i): System Condition and Integrity	10		Number of leaks detected by routine survey per system length(leaks/1000 km)	Hutt Valley and Porirua	36.716
10b(i): System Condition and Integrity	11		Number of leaks detected by routine survey per system length(leaks/1000 km)	Taranaki	24.486
10b(i): System Condition and Integrity	12		Number of leaks detected by routine survey per system length(leaks/1000 km)	Manawatu & Horowhenua	23.714
10b(i): System Condition and Integrity	13		Number of leaks detected by routine survey per system length(leaks/1000 km)	Hawke's Bay	25.017
10b(i): System Condition and Integrity	14		Number of third party damage events per system length(events/1000 km)	Wellington	38.857
10b(i): System Condition and Integrity	15		Number of third party damage events per system length(events/1000 km)	Hutt Valley and Porirua	18.076
10b(i): System Condition and Integrity	16		Number of third party damage events per system length(events/1000 km)	Taranaki	34.873
10b(i): System Condition and Integrity	17		Number of third party damage events per system length(events/1000 km)	Manawatu & Horowhenua	46.751
10b(i): System Condition and Integrity	18		Number of third party damage events per system length(events/1000 km)	Hawke's Bay	11.546
10b(i): System Condition and Integrity	19		Number of poor pressure events due to network causes	Wellington	-
10b(i): System Condition and Integrity	20		Number of poor pressure events due to network causes	Hutt Valley and Porirua	-
10b(i): System Condition and Integrity	21		Number of poor pressure events due to network causes	Taranaki	-
10b(i): System Condition and Integrity	22		Number of poor pressure events due to network causes	Manawatu & Horowhenua	-
10b(i): System Condition and Integrity	23		Number of poor pressure events due to network causes	Hawke's Bay	-
10b(i): System Condition and Integrity	24	Note: This entry may be excluded for sub-networks	Number of telephone calls to emergency numbers answered within 30 seconds per total number of calls	Powerco	0.924
10b(i): System Condition and Integrity	25		Product control—safety of distribution gas	Number of non-compliant odour tests	-

**10b(ii): Consumer Service**

Section	Row	Context	Category1	Category2	Proportion of emergencies responded to within 1 hour (%)	Proportion of emergencies responded to within 3 hours (%)	Average call response time (hours)	Number of emergencies
10b(ii): Consumer Service	30		Response time to emergencies (RTE)	Wellington	100.00%	100.00%	0.6	13
10b(ii): Consumer Service	31		Response time to emergencies (RTE)	Hutt Valley and Porirua	100.00%	100.00%	0.5	7
10b(ii): Consumer Service	32		Response time to emergencies (RTE)	Taranaki	83.33%	100.00%	0.7	6
10b(ii): Consumer Service	33		Response time to emergencies (RTE)	Manawatu & Horowhenua	100.00%	100.00%	0.3	9
10b(ii): Consumer Service	34		Response time to emergencies (RTE)	Hawke's Bay	100.00%	100.00%	0.4	3

**10b(ii): Consumer Service**

Section	Row	Context	Category1	Category2	Actual
10b(ii): Consumer Service	38		Number of complaints	Number of complaints per average total consumer numbers	0.000479

Commerce Commission Information Disclosure Template

**SCHEDULE 10b: REPORT ON NETWORK INTEGRITY AND CONSUMER SERVICE**

Network / Sub-Network Name	Central
----------------------------	---------

**10b(i): System Condition and Integrity**

Section	Row	Context	Category1	Category2	Actual
10b(i): System Condition and Integrity	4		Number of confirmed public reported gas escapes per system length(escapes/1000 km)	Taranaki	25.228
10b(i): System Condition and Integrity	5		Number of confirmed public reported gas escapes per system length(escapes/1000 km)	Manawatu & Horowhenua	21.004
10b(i): System Condition and Integrity	6		Number of confirmed public reported gas escapes per system length(escapes/1000 km)	Hawke's Bay	-
10b(i): System Condition and Integrity	7		Number of confirmed public reported gas escapes per system length(escapes/1000 km)		
10b(i): System Condition and Integrity	8		Number of confirmed public reported gas escapes per system length(escapes/1000 km)		
10b(i): System Condition and Integrity	9		Number of leaks detected by routine survey per system length(leaks/1000 km)	Taranaki	24.486
10b(i): System Condition and Integrity	10		Number of leaks detected by routine survey per system length(leaks/1000 km)	Manawatu & Horowhenua	23.714
10b(i): System Condition and Integrity	11		Number of leaks detected by routine survey per system length(leaks/1000 km)	Hawke's Bay	25.017
10b(i): System Condition and Integrity	12		Number of leaks detected by routine survey per system length(leaks/1000 km)		
10b(i): System Condition and Integrity	13		Number of leaks detected by routine survey per system length(leaks/1000 km)		
10b(i): System Condition and Integrity	14		Number of third party damage events per system length(events/1000 km)	Taranaki	34.873
10b(i): System Condition and Integrity	15		Number of third party damage events per system length(events/1000 km)	Manawatu & Horowhenua	46.751
10b(i): System Condition and Integrity	16		Number of third party damage events per system length(events/1000 km)	Hawke's Bay	11.546
10b(i): System Condition and Integrity	17		Number of third party damage events per system length(events/1000 km)		
10b(i): System Condition and Integrity	18		Number of third party damage events per system length(events/1000 km)		
10b(i): System Condition and Integrity	19		Number of poor pressure events due to network causes	Taranaki	-
10b(i): System Condition and Integrity	20		Number of poor pressure events due to network causes	Manawatu & Horowhenua	-
10b(i): System Condition and Integrity	21		Number of poor pressure events due to network causes	Hawke's Bay	-
10b(i): System Condition and Integrity	22		Number of poor pressure events due to network causes		
10b(i): System Condition and Integrity	23		Number of poor pressure events due to network causes		
10b(i): System Condition and Integrity	24	Note: This entry may be excluded for sub-networks	Number of telephone calls to emergency numbers answered within 30 seconds per total number of calls		
10b(i): System Condition and Integrity	25		Product control—safety of distribution gas	Number of non-compliant odour tests	-

**10b(ii): Consumer Service**

Section	Row	Context	Category1	Category2	Proportion of emergencies responded to within 1 hour (%)	Proportion of emergencies responded to within 3 hours (%)	Average call response time (hours)	Number of emergencies
10b(ii): Consumer Service			Response time to emergencies (RTE)	Taranaki	83.33%	100.00%	0.7	6
10b(ii): Consumer Service			Response time to emergencies (RTE)	Manawatu & Horowhenua	100.00%	100.00%	0.3	9
10b(ii): Consumer Service			Response time to emergencies (RTE)	Hawke's Bay	100.00%	100.00%	0.4	3
10b(ii): Consumer Service			Response time to emergencies (RTE)					
10b(ii): Consumer Service			Response time to emergencies (RTE)					

**10b(ii): Consumer Service**

Section	Row	Context	Category1	Category2	Actual
10b(ii): Consumer Service			Number of complaints	Number of complaints per average total consumer numbers	0.000494

Commerce Commission Information Disclosure Template

**SCHEDULE 10b: REPORT ON NETWORK INTEGRITY AND CONSUMER SERVICE**

Network / Sub-Network Name	Lower
----------------------------	-------

**10b(i): System Condition and Integrity**

Section	Row	Context	Category1	Category2	Actual
10b(i): System Condition and Integrity	4		Number of confirmed public reported gas escapes per system length(escapes/1000 km)	Wellington	70.111
10b(i): System Condition and Integrity	5		Number of confirmed public reported gas escapes per system length(escapes/1000 km)	Hutt Valley and Porirua	153.644
10b(i): System Condition and Integrity	6		Number of confirmed public reported gas escapes per system length(escapes/1000 km)		
10b(i): System Condition and Integrity	7		Number of confirmed public reported gas escapes per system length(escapes/1000 km)		
10b(i): System Condition and Integrity	8		Number of confirmed public reported gas escapes per system length(escapes/1000 km)		
10b(i): System Condition and Integrity	9		Number of leaks detected by routine survey per system length(leaks/1000 km)	Wellington	23.652
10b(i): System Condition and Integrity	10		Number of leaks detected by routine survey per system length(leaks/1000 km)	Hutt Valley and Porirua	36.716
10b(i): System Condition and Integrity	11		Number of leaks detected by routine survey per system length(leaks/1000 km)		
10b(i): System Condition and Integrity	12		Number of leaks detected by routine survey per system length(leaks/1000 km)		
10b(i): System Condition and Integrity	13		Number of leaks detected by routine survey per system length(leaks/1000 km)		
10b(i): System Condition and Integrity	14		Number of third party damage events per system length(events/1000 km)	Wellington	38.857
10b(i): System Condition and Integrity	15		Number of third party damage events per system length(events/1000 km)	Hutt Valley and Porirua	18.076
10b(i): System Condition and Integrity	16		Number of third party damage events per system length(events/1000 km)		
10b(i): System Condition and Integrity	17		Number of third party damage events per system length(events/1000 km)		
10b(i): System Condition and Integrity	18		Number of third party damage events per system length(events/1000 km)		
10b(i): System Condition and Integrity	19		Number of poor pressure events due to network causes	Wellington	-
10b(i): System Condition and Integrity	20		Number of poor pressure events due to network causes	Hutt Valley and Porirua	-
10b(i): System Condition and Integrity	21		Number of poor pressure events due to network causes		
10b(i): System Condition and Integrity	22		Number of poor pressure events due to network causes		
10b(i): System Condition and Integrity	23		Number of poor pressure events due to network causes		
10b(i): System Condition and Integrity	24	Note: This entry may be excluded for sub-networks	Number of telephone calls to emergency numbers answered within 30 seconds per total number of calls		
10b(i): System Condition and Integrity	25		Product control—safety of distribution gas	Number of non-compliant odour tests	-

**10b(ii): Consumer Service**

Section	Row	Context	Category1	Category2	Proportion of emergencies responded to within 1 hour (%)	Proportion of emergencies responded to within 3 hours (%)	Average call response time (hours)	Number of emergencies
10b(ii): Consumer Service			Response time to emergencies (RTE)	Wellington	100.00%	100.00%	0.6	13
10b(ii): Consumer Service			Response time to emergencies (RTE)	Hutt Valley and Porirua	100.00%	100.00%	0.5	7
10b(ii): Consumer Service			Response time to emergencies (RTE)					
10b(ii): Consumer Service			Response time to emergencies (RTE)					
10b(ii): Consumer Service			Response time to emergencies (RTE)					

**10b(ii): Consumer Service**

Section	Row	Context	Category1	Category2	Actual
10b(ii): Consumer Service			Number of complaints	Number of complaints per average total consumer numbers	0.000467

Company Name	Powerco Limited
For Year Ended	30 September 2025

## Schedule 14 Mandatory Explanatory Notes

*(Guidance Note: This Microsoft Word version of Schedules 14, 14a and 15 is from the Gas Distribution Information Disclosure Determination 2012 – as amended and consolidated 3 April 2018. Clause references in this template are to that determination)*

1. This schedule requires GDBs to provide explanatory notes to information provided in accordance with clauses 2.3.1, 2.4.21, 2.4.22, and subclauses 2.5.1(1)(e) and 2.5.2(1)(e).
2. This schedule is mandatory—GDBs must provide the explanatory comment specified below, in accordance with clause 2.7.1. Information provided in boxes 1 to 11 of this schedule is part of the audited disclosure information, and so is subject to the assurance requirements specified in section 2.8.
3. Schedule 15 (Voluntary Explanatory Notes to Schedules) provides for GDBs to give additional explanation of disclosed information should they elect to do so.

### *Return on Investment (Schedule 2)*

4. In the box below, comment on return on investment as disclosed in Schedule 2. This comment must include information on reclassified items in accordance with subclause 2.7.1(2).

**Box 1: Explanatory comment on return on investment**

The disclosed ROI under both a Vanilla and Post tax approach for 2025 is higher than 2024 (↑ to 6.81% from 5.45% and 6.16% from 4.66% respectively). This is primarily driven by an increase (↑ \$4.0m, 41.0%) in revaluations to \$13.8m. The current years revaluation rate was 3.05%, compared to 2.15% in 2024.

### *Regulatory Profit (Schedule 3)*

5. In the box below, comment on regulatory profit for the disclosure year as disclosed in Schedule 3. This comment must include-
  - 5.1 a description of material items included in other regulated income (other than gains / (losses) on asset disposals), as disclosed in 3(i) of Schedule 3
  - 5.2 information on reclassified items in accordance with subclause 2.7.1(2).

**Box 2: Explanatory comment on regulatory profit**

Regulatory profit for the year ended 30 September 2025 is \$28.4m, reflecting an increase of \$5.5m (↑ 23.9%) compared to the previous year. This was due to an increase in revaluations (↑ \$4.0m, 41.0%) and an increase in line charge revenue (↑ \$2.8m, 4.3%). This was offset partially by an increase in the regulatory tax allowance (↑ \$1.4m, 34.8%).

Other regulated income includes

- recoveries from consumers for operational activities.
- recovery of bad debts.
- revenue for shared corporate services provided by the regulated business to related parties.

*Merger and acquisition expenses (3(iv) of Schedule 3)*

6. If the GDB incurred merger and acquisitions expenditure during the disclosure year, provide the following information in the box below:

- 6.1 information on reclassified items in accordance with subclause 2.7.1(2)
- 6.2 any other commentary on the benefits of the merger and acquisition expenditure to the GDB.

**Box 3: Explanatory comment on merger and acquisition expenditure**

No merger and acquisition expenditure has been incurred during the disclosure year.

*Value of the Regulatory Asset Base (Schedule 4)*

7. In the box below, comment on the value of the regulatory asset base (rolled forward) in Schedule 4. This comment must include information on reclassified items in accordance with subclause 2.7.1(2).

**Box 4: Explanatory comment on the value of the regulatory asset based (rolled forward)**

The closing Regulatory Asset Base (RAB) value has increased by \$1.1m (↑ 0.2%) during the year to \$455.9m.

Revaluations (↑ \$4.0m, 41.0%) were higher than the 2024 disclosure period, whilst commissioned assets (↓ \$1.6m, 9.5%) were lower. The increase in revaluations is due to a higher CPI rate applied to the opening RAB (3.05% compared to 2.15% in the 2024 disclosure period).

The depreciation and disposals amount includes provisions related to the Commissioned WIP balance. This is consistent with the 2024 disclosure period.

*Regulatory tax allowance: disclosure of permanent differences (5a(i) of Schedule 5a)*

8. In the box below, provide descriptions and workings of the material items recorded in the following asterisked categories of 5a(i) of Schedule 5a-

- 8.1 Income not included in regulatory profit / (loss) before tax but taxable
- 8.2 Expenditure or loss in regulatory profit / (loss) before tax but not deductible

8.3 Income included in regulatory profit / (loss) before tax but not taxable

8.4 Expenditure or loss deductible but not in regulatory profit / (loss) before tax

**Box 5: Regulatory tax allowance: permanent differences**

Permanent differences amount to \$0.2m and relate to

- Customer contributions income that is included in taxable income, but not regulatory profit.
- Non-deductible costs such as certain entertainment and legal costs.
- Deductible expenditure relating to IRFS16 leases, but not in regulatory profit.

*Regulatory tax allowance: disclosure of temporary differences (5a(vi) of Schedule 5a)*

9. In the box below, provide descriptions and workings of material items recorded in the asterisked category 'Tax effect of other temporary differences' in 5a(vi) of Schedule 5a.

**Box 6: Tax effect of other temporary differences (current disclosure year)**

Temporary differences amount to \$0.4m, \$0.1m tax effected, and relate to

- \$0.1m in CIW income that will be recognised as taxable income over a period of 10 years.
- \$0.4m movement in other general provisions.
- (\$0.1m) FY20 income tax return tax prior period adjustments.

*Cost allocation (Schedule 5d)*

10. In the box below, comment on cost allocation as disclosed in Schedule 5d. This comment must include information on reclassified items in accordance with subclause 2.7.1(2).

**Box 7: Cost allocation**

Powerco has adopted a fully distributed cost approach to allocate shared costs between Powerco's electricity distribution, gas distribution and unregulated businesses.

**Directly attributable costs**

\$13.0m operating costs (63.6% of total operating costs) are directly attributable to the gas distribution business (GDB) compared to \$11.9m in the previous disclosure year.

All operating costs except specified systems operations and network support (SONS) costs and specified business support costs are directly attributable to the specific regulated businesses. Costs that are directly attributable to the gas distribution business primarily relate to:

- SONS (except network information services management costs)
- Network management and administration
- Customer related costs

**Proxy allocators**

Powerco adopts ABAA (accounting-based allocation approach) to determine the cost allocators that are used to allocate operating costs not directly attributable (less any arm's length deduction) to the gas distribution business or any other regulated service. If a causal relationship cannot be established between the cost incurred and the cost driver a proxy relationship may be used to determine the cost allocator.

Following analysis of each financial statement item by Powerco's management team and based on a combination of experience, knowledge, and the comparative sizes of Powerco's regulated businesses proxy relationships have been used to allocate operating costs for which a causal relationship cannot be established. The main reason a causal relationship cannot be established is that some costs do not have just one driver. The use of one cost allocator would unfairly affect the allocation of costs between regulated businesses.

**Costs not directly attributable**

\$7.4m operating costs (36.4% of the total) that are not directly attributable to the GDB have been allocated to the GDB, compared to \$7.8m in the prior disclosure year.

Costs that are not directly attributable to the gas distribution business primarily relate to SONS network information services management and business support costs.

SONS network information services management costs include personnel costs and professional service fees. A proxy fixed asset allocator based on the carrying value of network fixed assets is used.

Business support costs include personnel, professional services, information technology, building and insurance, administration, and communication and marketing. The allocators vary as follows:

- Corporate services apply a proxy allocator of distribution line charge revenue
- Human resources apply a proxy allocator of employee numbers
- Regulatory management apply a causal allocation of management's estimate of staff time working on gas regulated, other regulated and unregulated services and legal apply a proxy fixed asset allocator
- Insurance apply causal allocators of indemnity values, vehicle allocations and employee numbers
- Facility costs apply a causal allocator of employee numbers and a proxy fixed assets allocator
- Information systems and projects apply a proxy fixed asset allocator

Only one allocation methodology has been applied to each functional area and there have been no changes to any cost allocator used in the current disclosure year.

Rationale for the quantifiable measure used for each proxy allocator is as follows:

Functional Area	Proxy Allocator	Rationale
Corporate Services	Net Revenue	Corporate services for the business do not only relate to asset management, therefore, net revenue has been chosen as the most complete measure that encompasses all the activities of the business to allocate corporate service costs.
Human Resources	Employee numbers	Human resource costs relate to managing the employees of the business. Therefore, an assumption can be made that the greater the number of employees in a business segment, the greater the share of human resources costs required to support that segment.
Legal	Fixed Assets	A significant amount of legal costs relates to capital expenditure and existing assets. Therefore, an assumption can be made that the greater the amount of assets in a business segment, the greater the share of legal costs required to support that segment.
Information Systems and projects	Fixed Assets	A significant amount of information systems costs relate to managing and supporting the assets of the business. Therefore, an assumption can be made that the greater the amount of assets in a business segment, the greater the share of information system costs required to support that segment.

*Asset allocation (Schedule 5e)*

11. In the box below, comment on asset allocation as disclosed in Schedule 5e. This comment must include information on reclassified items in accordance with subclause 2.7.1(2).

**Box 8: Commentary on asset allocation**

\$444.9m (97.6%) of the total RAB value is directly attributable to the gas distribution business (GDB). \$11.0m (2.4%) of the total RAB value is not directly attributable but has been allocated to the GDB. In the previous disclosure year, the proportionate split between directly attributable and not directly attributable was 97.3% and 2.7%, respectively.

The principles supporting Powerco's asset allocation are consistent with the principles supporting cost allocation described in Box 7.

Shared non-network assets have been allocated to the regulatory asset base based on the proxy allocator of fixed asset net book value.

There have been no reclassifications in the period reported.

*Capital Expenditure for the Disclosure Year (Schedule 6a)*

12. In the box below, comment on expenditure on assets for the disclosure year, as disclosed in Schedule 6a. This comment must include-
- 12.1 a description of the materiality threshold applied to identify material projects and programmes described in Schedule 6a;
  - 12.2 information on reclassified items in accordance with subclause 2.7.1(2).

**Box 9: Explanation of capital expenditure for the disclosure year**

Expenditure on assets for the 2025 disclosure year totalled \$14.9m, which is \$3.2m (↓ 17.3%) less than the prior disclosure year (\$18.1m). This comprises decreases in consumer connection (↓ \$0.9m, 18.8%), system growth (↓ \$0.3m, 37.1%), asset replacement and renewal (↓ \$0.9m, 10.8%), asset relocations (↓ \$0.2m, 43.1%) and non-network assets (↓ \$1.4m, 60.9%). This is offset slightly by an increase in reliability, safety and environment (↑ \$0.6m, 40.8%).

**Materiality threshold**

A materiality threshold of \$0.1m has been applied to identify material projects and programmes listed in Schedule 6a. Network projects or programmes of work have also been considered material if their costs make up 40% or more of the total costs in the expenditure category or 10% or more of the total costs in the other reliability, safety and environment category.

Expenditure Category	Threshold
Asset relocations	Projects exceed 40% of the total costs for that category in the disclosure year
Quality of supply Other Network capex	Project costs exceed \$0.1m in the disclosure year
Other reliability, safety and environment	Projects greater than 10% of total costs for that category in the disclosure year or project costs exceeding the materiality threshold of \$0.1m

**Reclassified items**

No items have been reclassified during this disclosure year.

*Operational Expenditure for the Disclosure Year (Schedule 6b)*

13. In the box below, comment on operational expenditure for the disclosure year, as disclosed in Schedule 6b. This comment must include-
  - 13.1 Commentary on assets replaced or renewed with asset replacement and renewal operational expenditure, as reported in 6b(i) of Schedule 6b
  - 13.2 Information on reclassified items in accordance with subclause 2.7.1(2)
  - 13.3 Commentary on any material atypical expenditure included in operational expenditure disclosed in Schedule 6b, including the value of the expenditure, the purpose of the expenditure, and the operational expenditure categories the expenditure relates to.

**Box 10: Explanation of operational expenditure for the disclosure year**

Operating expenditure (Opex) for the disclosure year 2025 totalled \$20.4m, which is higher than the prior disclosure year (↑ \$0.7m, 3.3%). Network Opex expenditure increased to \$8.9m (↑ \$0.6m, 7.8%). This was driven by an increase to asset replacement and renewal expenditure to \$4.4m (↑ \$0.4m, 10.2%). Business support expenditure decreased to \$7.5m (↓ \$0.8m, 9.5%) but was offset by an increase to System operations and network support costs to \$4.0m (↑ \$0.8m, 25.3%).

Powerco considers replacement and renewal maintenance to be operating expenditure where the primary driver is the maintenance of asset integrity to address the progressive deterioration or obsolescence of particular assets, or the need to maintain physical security.

Powerco interprets asset replacement and renewal maintenance to include defect remedy of a non-routine nature which require the replacement of assets or asset subcomponents in order to maintain the asset in its current state, but do not meet the thresholds of our capitalisation policy.

**Reclassified items**

No items have been reclassified during this disclosure year.

**Atypical expenditure**

There have been no material items of atypical expenditure.

*Variance between forecast and actual expenditure (Schedule 7)*

14. In the box below, comment on variance in actual to forecast expenditure for the disclosure year, as reported in Schedule 7. This comment must include information on reclassified items in accordance with subclause 2.7.1(2).

**Box 11: Explanatory comment on variance in actual to forecast expenditure**

Expenditure on assets (network and non-network) for the disclosure year 2025 totalled \$14.9m, which is \$3.3m (↓ 18.3%) less than the 2024 Asset Management Plan (AMP) forecast of \$18.3m. The decrease in expenditure is the result of a reduction in spend across several categories including:

- System growth (↓\$0.3m, 35.9%)
- Quality of supply (↓\$0.01m, 24.4%)
- Consumer connection (↓\$0.8m, 18.5%)
- Non-network (↓\$1.7m, 65.2%) asset expenditure.

The reasons for variances are noted below, and commentary is provided for each category showing a forecast to actual variance of greater than 10% (subject to being material in dollar terms).

**Capital Expenditure**

Overall network capital expenditure was lower than forecast for the year by \$1.6m (↓ 10.5%). Variances within the categories are attributed to targeting the most economically viable investments, ensuring that we are providing a consistently safe, reliable, resilient, and cost-effective gas network now and into the future, in a manner that will deliver value to our customers.

System growth – much of our growth expenditure related to connecting new customers is reactive (~90%) and is achieved through reticulation of new subdivisions as they are developed. A slowdown in subdivision (mains and rectification) development due to the economic climate and high interest rates in recent years reflects a 35.9% decrease (↓ \$0.3m) within this category.

Quality of supply – We have seen a reduction in upgrade expenditure 24.4% (↓ \$0.01m), due to planned rationalisation projects that have been cancelled in favour of more economic station renewals. In addition, lower demand (lower connection plus industrial and commercial customers reducing load) has deferred the requirement for system reinforcement.

Consumer connection – throughout the 2025 disclosure period, the volume of customer connections continued to reduce with a lower volume of applications due to shifting economic conditions and new connections and volume assumptions aligned with our Global Alignment climate scenario. This aligns with our expectations as noted in the Gas AMP 2024 and 2025, reflecting a 18.5% reduction (↓ \$0.8m) against the forecast.

Overall, non-network capital expenditure for the disclosure period was 65.2% below forecast (a \$1.7m underspend). This is mainly due to lower-than-expected investment in non-network ICT systems, facilities and leases. The variance reflects that shared costs allocated to the gas business were less than anticipated / forecast in the 2024 AMP.

**Operational Expenditure**

Operational expenditure in the disclosure period is higher than the AMP forecast by \$1.2m (↑ 6.2%).

Network operational expenditure is above forecast by \$1.6m (↑ 21.5%). Variances within the categories is attributed to reactive repair and replacement work identified as part of our scheduled inspections and fault call outs. Additionally, we have seen an overall increase in costs to deliver projects associated with traffic management, higher inflation and increasing labour costs in 2024/25. The reasons for variances are noted below, and commentary is provided for each category showing a forecast to actual variance of greater than 10% (subject to being material in dollar terms).

Asset Replacement & Renewal – 59.0% uplift (↑ \$1.6m), in this category is primarily driven by:

- An increase in the number of leakage events being identified in the carriageway on mains pipes (not services), which has required an increase in the level of traffic control and time to find and repair the leak. In addition, we are seeing that small leaks being identified by the Leak Detection Vehicle (LDV) are harder for the field operatives to pinpoint. Hence, more time is being spent on site to determine the location of the leak.

- We have seen an increase in the number of mainline valves requiring maintenance to either refurbish or remove minor gas leaks.
- An increase in the amount of reactive work being done to operate the Cathodic Protection (CP) network, repairing rectifiers, fixing CP test points, replacing flange insulation kits etc.
- We have completed nine Opex projects to date, worth approx. \$0.5m. These projects are listed within the Gas Works Plan FY26 and range from no odorant to redundant mains decommissioning projects.

*Information relating to revenues and quantities for the disclosure year*

15. In the box below, please explain reasons for any material differences between target revenue disclosed before the start of the pricing year in accordance with clause 2.4.1 and subclause 2.4.3(3), and total billed line charge revenue for the disclosure year as disclosed in Schedule 8.

**Box 12: Explanatory comment relating to revenue for the disclosure year**

Powerco's actual revenue for the 2025 disclosure period was \$67.8m compared to target revenue of \$70.4m (↓ \$2.6m, 3.8%).

There is no material difference between target revenue and total billed line charge revenue.

16. If price category codes or consumer groups (as applicable) have been changed in a disclosure year, please explain in the box below the effect of this on the allocation of ICPs, quantities and revenues between consumer groups disclosed in Schedule 8.

**Box 13: Explanatory comment relating to changed price category codes or consumer groups**

No change in price category codes or consumer groups during the disclosure period.

*Network Reliability for the Disclosure Year (Schedule 10a)*

17. In the box below, comment on network reliability for the disclosure year, as disclosed in Schedule 10a.

**Box 14: Commentary on network reliability for the disclosure year**

The number of planned interruptions has decreased by 34% compared to previous disclosure. The biggest reduction comes in Hutt Valley & Porirua, and Wellington. The number of Unplanned interruptions has also decreased by 48% compared to previous disclosures. Most of these unplanned interruptions are in Taranaki due to leakage issues. The overall and Class I SAIDI Value is lower than the previous years' disclosure. As noted in previous information disclosures, SAIDI is a volatile measure that poorly reflects the overall gas distribution networks actual performance.

*Insurance cover*

18. In the box below, provide details of any insurance cover for the assets used to provide gas pipeline services, including-
  - 18.1 The GDB’s approaches and practices in regard to the insurance of assets, including the level of insurance;
  - 18.2 In respect of any self insurance, the level of reserves, details of how reserves are managed and invested, and details of any reinsurance.

**Box 15: Explanation of insurance cover**

Powerco holds significant insurance cover relating to material damage and business interruption, targeted at key assets. This includes full cover for buildings and contents, substations, Gas district regulators, Gas special crossings and IS server equipment.

Powerco continues to prudently insure our network and other assets where it is economically feasible to do so, in line with good industry practice. Cover for poles, wires and pipes (commonly referred to as transmission and distribution cover) are, for all practical purposes, unavailable in NZ. Where it may be available in small amounts across our geographic region, the cost is considered to be uneconomic versus the risk.

To manage Powerco’s exposure to a catastrophic event affecting its uninsured assets, the company maintains headroom in its debt facilities as explained below. The geographically diverse nature of Powerco’s assets, and the resilience of those assets, also provides some practical mitigation of seismic risks. Powerco maintains debt facilities, in excess of net (drawn) debt, that would be available for use should events occur which require extra funds to be made available quickly. This headroom amount is in excess of our day-to-day working capital requirements.

The value of this facility headroom, currently \$100 million, is based on a ground up loss estimate by Marsh Risk Consulting of the most probable damage to Powerco’s network assets resulting from a catastrophic event.

Insurance costs are allocated to Powerco’s separate businesses following Powerco’s allocation policies discussed earlier in this document.

*Amendments to previously disclosed information*

19. In the box below, provide information about amendments to previously disclosed information disclosed in accordance with clause 2.12.1 in the last 7 years, including:
  - 19.1 a description of each error; and
  - 19.2 for each error, reference to the web address where the disclosure made in accordance with clause 2.12.1 is publicly disclosed.

**Box 16: Disclosure of amendment to previously disclosed information**

There have been no amendments to previously disclosed information made in accordance with clause 2.12.1.

Company Name	<u>Powerco Limited</u>
For Year Ended	<u>30 September 2025</u>

### **Schedule 15: Voluntary Explanatory Notes**

*(In this Schedule, clause references are to the Gas Distribution Information Disclosure Determination 2012 – as amended and consolidated 3 April 2018.)*

1. This schedule enable GDBs to provide, should they wish to:
  - 1.1 additional explanatory comment to reports prepared in accordance with clauses 2.3.1, 2.4.21, 2.4.22, 2.5.1, and 2.5.2.
  - 1.2 information on any substantial changes to information disclosed in relation to a prior disclosure year, as a result of final wash-ups.
2. Information in this schedule is not part of the audited disclosure information, and so is not subject to the assurance requirements specified in section 2.8.
3. Provide additional explanatory comment in the box below.

**Box 1: Voluntary explanatory comment on disclosed information**  
**Finance (Schedules 2-7)***Accelerated depreciation (Schedule 4)*

The current context of the gas sector and changing gas use presents significant uncertainty. To mitigate network stranding risk for GPBs and maintain incentives for continued investment needed to meet current and future demand, the Commerce Commission continues to apply the industry demand scenarios developed for DPP3 to adjust regulatory asset lives. These adjustments align depreciation with expected economic asset lives and provide a fairer distribution of costs over current and future users, bringing forward some cost recovery into the current regulatory period.

*Weighted average remaining useful life of assets*

The weighted average remaining useful life of assets has been calculated in accordance with Schedule 16 of the Information Disclosure Determination. This specifies that the weighting is based on opening RAB values. Opening RAB is a depreciated value that skews the weighted average remaining useful life value towards the newer, and consequently, higher value, longer remaining life assets. This measure is therefore not a true reflection of the age of Powerco's assets.

It is also important to note that asset age, particularly total average remaining asset life, is not a key driver of the need to replace network assets. Good asset management practice would suggest this is primarily driven by overall asset health – i.e. condition/performance/criticality. For this reason, Powerco's forecast investment profiles set out in the company's current Asset Management Plan are not directly linked to addressing specific movements in average asset age. This, however, is one of several key considerations.

*Disposals and Depreciation provisions*

As noted in Box 4, the disposals and depreciation result for the current year include provisions related to Commissioned WIP that is included in RAB.

Delays in capitalising WIP to final assets due to system and process issues has resulted in some assets that are commissioned remaining in WIP. This has highlighted the need to include provisions for depreciation and disposals. These provisions are recalculated annually using up-to-date actual disposals and depreciation data, and have been recalculated for 2025.

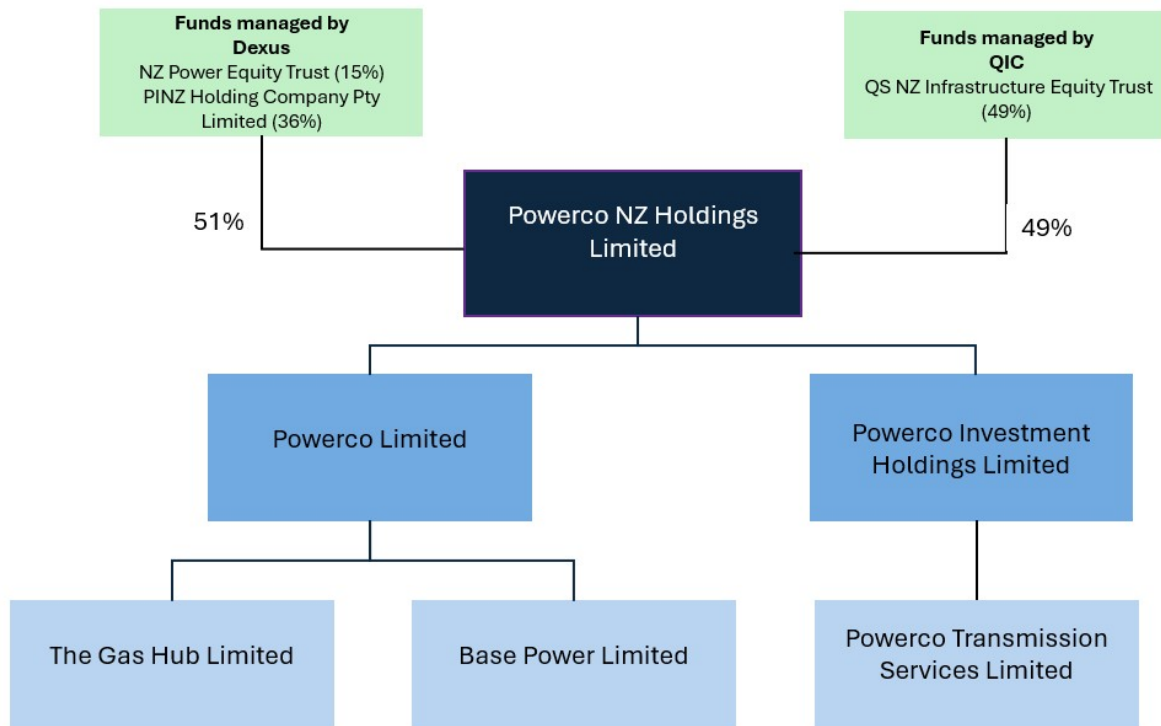
The disposal and depreciation provisions apply the same methodology as used for accounting, while also ensuring that these provisions are calculated in line with the relevant Input Methodology.

The provision included in 2025 captures new assets included in commissioned WIP this year, and assets that remain in commissioned WIP from previous years. Significant effort has been made in 2025 to reduce the number of commissioned assets remaining in WIP. It will continue to take several years to catch up, with the impact of the reduced disposal provision flowing through as actual disposals are processed.

This provision-based approach will be used in future years.

*Related parties (Schedule 5b)*

Referencing limb a) of the related party definition, Powerco Limited’s external related parties include:



- Powerco NZ Holdings Limited does not trade. Its purpose is to form a corporate group through share ownership.
- Powerco Investment Holdings Limited is a holding company for Powerco's contestable investment subsidiaries.
- Powerco Transmission Services Limited's purpose is for the design and construction of electrical transmission assets, and it was sold to Powerco Investment Holdings Limited on 1 April 2025.
- Powerco Limited is primarily a regulated electricity and gas distribution business. It also conducts unregulated activities such as gas metering and includes a business development team to identify and take advantage of both regulated and unregulated opportunities. Powerco Limited provides business support services to Base Power Limited and the unregulated ‘parts’ of the regulated business.
- The Gas Hub Limited is not active.
- Base Power Limited provides remote area power supply units to the market and Powerco’s Electricity Distribution business.

Referencing limb b) of the related party definition, Powerco Limited’s internal related parties include:

- Gas metering

The Gas Distribution Business did not purchase any assets, goods, or services from any related party.

All related party transactions are valued on an equivalent arm’s length basis. Powerco Limited has not adopted the consolidation approach. Depending on the type of transaction the valuation method may require the application of a:

- a) market-tested value; or
- b) market-tested margin.

Powerco applies a market-tested margin to regulatory income for business support services provided to related parties. To ensure Powerco's valuation of related party transactions is based on an objective and independent measure, PwC was engaged to report the margin benchmarks observed in the market for relevant corporate services.

- The equivalent arm's length value of services provided to related parties is \$2.48m, of which \$2.47m is allocated to Powerco's Gas Distribution business.

*Term Credit Spread Differential Allowance (Schedule 5c)*

The presentation is rounded to the nearest thousand.

## 6. Directors' Certificate

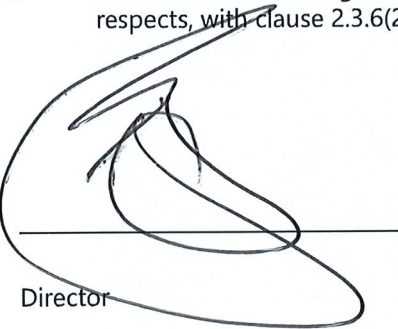
### Directors' certificate for the Gas Distribution Information Disclosures

For the year 1 October 2024 – 30 September 2025

Pursuant to clause 2.9.3 of Section 2.9

We, John Loughlin, and Richard Van Breda, being directors of Powerco Limited certify that, having made all reasonable enquiry, to the best of our knowledge:

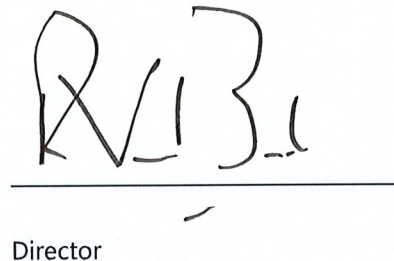
- a) the information prepared for the purposes of clauses 2.3.1, 2.3.2, 2.4.21, 2.4.22, 2.5.1, 2.5.2 and 2.7.1 of the Gas Distribution Information Disclosure Determination 2012 in all material respects complies with that determination; and
- b) the historical information used in the preparation of Schedules 8, 9a, 9b, 9c, 9d, 10a, 10b and 14 has been properly extracted from Powerco Limited's accounting and other records sourced from its financial and non-financial systems, and that sufficient appropriate records have been retained.
- c) In respect of information concerning assets, costs and revenues valued or disclosed in accordance with clause 2.3.6 of the Gas Distribution Information Disclosure Determination 2012 and clauses 2.2.11(1)(g) and 2.2.11(5) of the Gas Distribution Services Input Methodologies Determination 2012, we are satisfied that -
  - i. the costs and values of assets or goods or services acquired from a related party comply, in all material respects, with clauses 2.3.6(1) and 2.3.6(3) of the Gas Distribution Information Disclosure Determination 2012 and clauses 2.2.11(1)(g) and 2.2.11(5)(a)-2.2.11(5)(b) of the Gas Distribution Services Input Methodologies Determination 2012; and
  - ii. the value of assets or goods or services sold or supplied to a related party comply, in all material respects, with clause 2.3.6(2) of the Gas Distribution Information Disclosure Determination 2012.

  
\_\_\_\_\_  
Director

19 March 2026

  
\_\_\_\_\_

Date

  
\_\_\_\_\_  
Director

19 March 2026

  
\_\_\_\_\_

Date

Note: Section 103(2) of the Commerce Act 1986 provides that no person shall attempt to deceive or knowingly mislead the Commission in relation to any matter before it. It is an offence to contravene section 103(2) and any person who does so is liable on summary conviction to a fine not exceeding \$100,000 in the case of an individual or \$300,000 in the case of a body corporate.



**INDEPENDENT ASSURANCE REPORT  
TO THE DIRECTORS OF POWERCO LIMITED AND THE COMMERCE COMMISSION**

**Report on the Disclosure Information prepared in accordance with the Gas Distribution Information Disclosure Determination 2012 (and subsequent amendments)**

We have undertaken a reasonable assurance engagement in respect of the compliance of Powerco Limited (the 'Company') with the Gas Distribution Information Disclosure Determination 2012 (and subsequent amendments) (the 'Information Disclosure Determination') for the disclosure year ended 30 September 2025 where we are required to opine on:

- whether the Company has complied, in all material respects with the Information Disclosure Determination, in preparing the information disclosed in Schedules 1 to 4, 5a to 5g, 6a and 6b, 7, the system average interruption duration index ('SAIDI') and system average interruption frequency index ('SAIFI') information disclosed in Schedule 10a(ii) and the explanatory notes in boxes 1 to 11 in Schedule 14 (the 'Disclosure Information'); and
- whether the Company's basis for valuation of related party transactions (the 'Related Party Transaction Information') has complied, in all material respects, in accordance with clause 2.3.6 of the Information Disclosure Determination, and clauses 2.2.11(1)(g) and 2.2.11(5) of the Gas Distribution Services Input Methodologies Determination 2012 (and subsequent amendments) (the 'Input Methodologies Determination').

**Opinion**

In our opinion, in all material respects:

- as far as appears from an examination of them, proper records to enable the complete and accurate compilation of the Disclosure Information have been kept by the Company;
- as far as appears from an examination, the information used in the preparation of the Disclosure Information has been properly extracted from the Company's accounting and other records and has been sourced, where appropriate, from the Company's financial and non-financial systems;
- the Company has complied with the Information Disclosure Determination in preparing the Disclosure Information; and
- the Company's basis for valuation of related party transactions complies with the Information Disclosure Determination and the Input Methodologies Determination.

**Basis of Opinion**

We conducted our engagement in accordance with the International Standard on Assurance Engagements (New Zealand) 3000 (Revised): *Assurance Engagements Other Than Audits or Reviews of Historical Financial Information* ('ISAE (NZ) 3000') and the Standard on Assurance Engagements 3100 (Revised): *Compliance Engagements* ('SAE 3100') issued by the New Zealand Auditing and Assurance Standards Board ('NZAuASB').

We believe that the evidence we have obtained is sufficient and appropriate to provide a basis for our opinion.

**Key Assurance Matters**

Key assurance matters are those matters that, in our professional judgement, required significant attention when carrying out the assurance engagement during the current disclosure year. These matters were addressed in the context of our compliance engagement, and in forming our opinion. We do not provide a separate opinion on these matters.

Key Assurance Matter	How our procedures addressed the key assurance matter
<p>Completeness and accuracy of System Average Interruption Duration Index ('SAIDI') and System Average Interruption Frequency Index ('SAIFI')</p>	
<p>The Information Disclosure Determination defines certain quality measures in relation to the number of interruptions, faults, cause of faults and the average SAIDI and SAIFI values.</p> <p>SAIDI and SAIFI is calculated using aggregate faults and interruptions information for the period through prescribed formulas and requirements disclosed in Schedule 10a(ii) of the Information Disclosure Determination.</p> <p>The completeness and accuracy of SAIDI and SAIFI is a key assurance matter due to the reliance on manual interruption records completed by Powerco's field service providers to inform the data entry of interruption information for a large volume of faults.</p>	<p>Our procedures on the completeness and accuracy of SAIDI and SAIFI included the following:</p> <ul style="list-style-type: none"> <li>• Obtaining an understanding of the Company's methods for recording gas outages and their duration;</li> <li>• Evaluating the design and implementation of key controls related to the recording and the reviewing of outage data;</li> <li>• Utilising media searches to determine whether gas interruption events in the media were appropriately recorded in the spreadsheet and the outage database;</li> <li>• On a sample basis, selecting faults recorded on the outage database and tracing the number of customers, number of minutes, the class type and fault cause to the information recorded on the outage listing;</li> <li>• On a sample basis, selecting faults recorded on the interruption records prepared by Powerco's external field service providers and tracing the number of customers, number of minutes, the class type and fault cause to the information recorded in the system and the information recorded on the outage listing;</li> <li>• Selecting a sample of health and safety incidents reported and confirming that they were correctly included/excluded in outage database.</li> <li>• Selecting a sample of interruption records prepared by Powerco's external field service providers to confirm that the details have been accurately reported in outage database and reported in the outage records; and</li> <li>• Recalculating SAIDI and SAIFI according to the prescribed formulas and requirements of the Information Disclosure Determination.</li> </ul>

Key Assurance Matter	How our procedures addressed the key assurance matter
Capital expenditure and assets commissioned into the regulatory asset base ('RAB')	
<p>The Company carries out a large number of individual network system projects that can be either operational (network maintenance) or capital (asset replacement or network growth) in nature.</p> <p>In the current year, capital expenditure disclosed in Schedule 6A was \$14.7 million and commissioned assets into the RAB disclosed in Schedule 4 was \$14.8 million, compared to network operating expenditure of \$8.9 million disclosed in Schedule 6B.</p> <p>Capital expenditure and assets commissioned into the RAB are a key assurance matter due to the significant judgement pertaining to the assessment of whether the capital expenditure and assets commissioned meet the definition under the Information Disclosure Determination.</p>	<p>Our procedures on capital expenditure and commissioned assets into the RAB included the following:</p> <ul style="list-style-type: none"> <li>Assessing whether the Company's capitalisation policy was in line with NZ IAS 16 <i>Property, Plant and Equipment</i>, NZ IAS 38 <i>Intangible Assets</i> and NZ IFRS 16 <i>Leases</i>;</li> <li>Evaluating the design and implementation of controls over the classification of network expenditure;</li> <li>Examining a sample of capital expenditure and assets included in the RAB to invoices or other supporting information to determine whether the expenditure met the capitalisation criteria in the Information Disclosure Determination; and</li> <li>Comparing the assets commissioned into the RAB to those commissioned for financial reporting purposes and investigating any significant variances.</li> </ul>

## Director's Responsibility

The Directors are responsible on behalf of the Company for the preparation of the Disclosure Information and Related Party Transaction Information in accordance with the Information Disclosure Determination and the Input Methodologies Determination.

The Directors of the Company are also responsible for the identification of risks that may threaten compliance with the Schedules and clauses identified above and controls which will mitigate those risks and monitor ongoing compliance.

## Our Independence and Quality Management

We have complied with the independence and other ethical requirements of Professional and Ethical Standard 1: *International Code of Ethics for Assurance Practitioners (including International Independence Standards) (New Zealand)* ('PES 1') issued by the NZAuASB, which is founded on fundamental principles of integrity, objectivity, professional competence and due care, confidentiality, and professional behaviour.

Other than in our capacity as statutory auditor of the financial statements for the year ended 31 March 2025 and the provision of other audit related services including the audit of regulatory disclosure statements, we have no other relationship with, or interests in, the Company.

Our firm applies Professional and Ethical Standard 3: *Quality Management for Firms that Perform Audits or Reviews of Financial Statements, or Other Assurance or Related Services Engagements*, which requires the firm to design, implement and operate a system of quality management including policies and procedures regarding compliance with ethical requirements, professional standards, and applicable legal and regulatory requirements.



## **Assurance Practitioner's Responsibility**

Our responsibility is to express an opinion whether the Disclosure Information and the Related Party Transaction Information has been prepared, in all material respects, in accordance with the Information Disclosure Determination and the Input Methodologies Determination.

ISAE (NZ) 3000 and SAE 3100 require that we plan and perform our procedures to obtain reasonable assurance that the Company has complied, in all material respects, with the Information Disclosure Determination and the Input Methodologies Determination in relation to the preparation of the Disclosure Information and the Related Party Transaction Information.

An assurance engagement to report on the Company's compliance of the Disclosure Information and the Related Party Transaction Information in accordance with the Information Disclosure Determination and the Input Methodologies Determination involves performing procedures to obtain evidence about the compliance activity and controls implemented to meet the requirements of the Information Disclosure Determination and the Input Methodologies Determination. The procedures selected depend on our judgement, including the identification and assessment of risk of material non-compliance with the Information Disclosure Determination and the Input Methodologies Determination.

## **Inherent Limitations**

Because of the inherent limitations of an assurance engagement, together with the inherent limitations of any system of internal control, it is possible that fraud, error, or non-compliance may occur and not be detected. As the procedures performed for this engagement are not performed continuously throughout the current disclosure year, and the procedures performed in respect of the Company's compliance with the Information Disclosure Determination and the Input Methodologies Determination are undertaken on a test basis, our assurance engagement cannot be relied on to detect all instances where the Company may not have complied with the Information Disclosure Determination and the Input Methodologies Determination.

Further, a reasonable assurance engagement for the current disclosure year does not provide assurance on whether the Company's compliance with the Information Disclosure Determination and the Input Methodologies Determination will continue in the future.

## **Use of our Report**

Our assurance report ('our Report') has been prepared solely for the Directors of the Company and the Commerce Commission in accordance with clause 2.8.1 of the Information Disclosure Determination, for the purpose of establishing whether the compliance requirements have been met. We accept or assume no duty, responsibility, or liability to any party, other than you, in connection with our Report or this engagement including without limitation, liability for negligence in relation to the opinion expressed in our Report.

A stylized, handwritten-style signature of "Deloitte Limited" in black ink.

**Deloitte Limited**  
Auckland, New Zealand  
19 March 2026