

Private service line and trees

A property owner is usually responsible for the maintenance and repair of electrical lines and equipment on and over their property, that serve their property. These are known as service lines and are owned by the property owner and not Powerco.

Powerco is usually responsible for the maintenance of lines and equipment it owns up to the point of supply to the property, which is usually at the boundary of the property.

Property owners are responsible for all costs of trimming or clearing trees near, their own service lines.

“Do not attempt to cut trees near, or in, service lines yourself. Service lines are dangerous. Always arrange for a qualified Contractor to do the work for you”

ASPLUNDH
specialists in vegetation management

Coromandel, Thames Valley, Tauranga, Taranaki
0800 4ASPLUNDH - 0800 4277 586



Manawatu 06 356 7362
Wanganui 06 349 0006

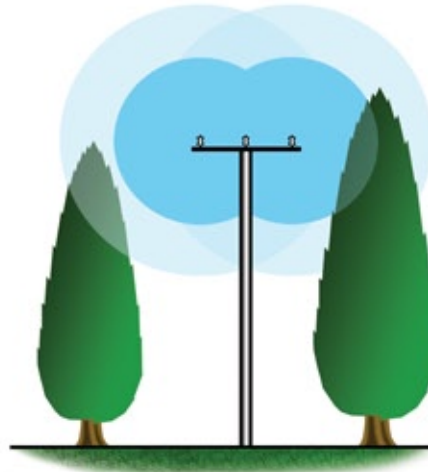


Wairarapa
06 377 2282

Minimum distances stated by regulation

An illustration of minimum distances trees must be kept away from lines, is provided below.

Note: It is better and safer to clear trees well beyond the minimum distances.



**Tree in
Notice Zone**

**Tree in
Growth Limit Zone**

OVERHEAD LINE	NOTICE ZONE & GROWTH LIMIT ZONE	GROWTH LIMIT ZONE
33kV-High Voltage	3.5 metres	2.5 metres
11kV-High Voltage	2.6 metres	1.6 metres
400V/230V-Low Voltage	1.5 metres	1/2 metre

Guidelines have been published under *The Health & Safety in Employment Act* about safe working on trees around lines.

An offence may be committed if work is carried out around lines without compliance with the guidelines. These guidelines include a 4m radius zone from lines. This is the law.

Powerco's website www.powerco.nz has more information relating to trees and power lines.

Important

tree maintenance
& safety information
for the tree owner

Keeping trees away
from power lines,
keeping you safe and
keeping power
supply on



POWERCO