

Electricity Pricing Policy

1 April 2024 - 31 March 2025

FY25

POWERco

Powerco Limited – Electricity Pricing Policy

As referenced by Powerco Network Agreements

Electricity Pricing Schedule

Loss Factors

Billing and Settlement Process

Effective: 1 April 2024

Version: 1.0

Table of Contents

Introduction.....	5
Section One: Electricity Pricing Schedule	5
Part A: General Terms and Conditions	5
1.0 Introduction.....	5
2.0 Interpretation	5
3.0 Definitions.....	5
4.0 ICP Status	11
5.0 Selection of Price Category.....	12
6.0 Transmission Rental Rebates (aka SRAM aka LCE)	12
7.0 New Subdivision Charges	13
8.0 Miscellaneous Fees.....	13
9.0 Distributed/Embedded Generation.....	14
10.0 Embedded Networks	14
11.0 Demand-Based Pricing Methodology.....	14
12.0 Asset-Based Pricing Methodology	15
13.0 Building Block Methodology (“BBM”) Asset-Based Pricing.....	17
14.0 Data File Requirements.....	17
15.0 Reactive Power Charges (formerly ‘Power Factor Charges’)	17
Part B: Price Categories and Pricing Schedules	19
16.0 Western Region Distribution Networks	19
17.0 Western Region Price Categories and Prices.....	21
18.0 Data File Requirements - Western Region	25
19.0 Tauranga Distribution Network.....	27
20.0 Tauranga Network Price Categories and Prices.....	28
21.0 Valley Distribution Network	30
22.0 Valley Network Price Categories and Prices.....	31
23.0 Data File Requirements - Eastern Region	33
Part C: Specific Conditions	35
24.0 Conditions: Builder’s Temporary Supply	35
25.0 Conditions: Low Fixed Charge Price Categories and Tariff Options	35
26.0 Conditions: Temporary Accommodation	35
27.0 Conditions: Asset-Specific Delivery Charges.....	36
Part D: Meter Configuration	37
28.0 Controlled Price Category and Price Components	37
29.0 Existing Load Control Signals by Region	38
30.0 Tariff Option Descriptions & Conditions	39
31.0 Metering Requirements.....	39
32.0 Meter Register Code Reporting	40

Part E: Streetlights / Unmetered Supply	41
33.0 Introduction	41
34.0 Requirements - Streetlights	41
35.0 Conditions	41
36.0 Process	42
37.0 Calculation	42
Section Two: Loss Factors	45
1.0 General	45
2.0 Loss Factors as of 1 April 2024	45
3.0 Site-Specific Losses	46
Section Three: Billing and Settlement Process	49
1.0 General	49
2.0 Submissions – Consumption Data	49
3.0 Process by Billing Methodology	50
4.0 Payment	51
5.0 Revision Cycles and Reconciliation	51

PAGE INTENTIONALLY LEFT BLANK

General terms and conditions



Introduction

This Pricing Policy applies to the Distributor's Network effective from 1 April 2024.

The Pricing Schedule (Section One of this Pricing Policy) is referenced by Schedule 7 of all Network Agreements.

The Billing and Settlement Process (Section Three of this Pricing Policy) is referenced by Schedule 2 of all Network Agreements.

Where any provision of this Pricing Policy conflicts with the provisions of any Network Agreement, the Network Agreement will prevail.

Unless the context otherwise requires, terms used in this Pricing Policy have the meanings defined in the Network Agreement. Some additional terms are defined in Part A of the Pricing Schedule, and they apply throughout this Pricing Policy. Other additional terms are defined where required in Parts B and C of the Pricing Schedule and apply to the relevant part only.

Section One: Electricity Pricing Schedule

Part A: General Terms and Conditions

1.0 Introduction

- 1.1 This Pricing Schedule applies to the Distributor's Network, and sets the prices for use of the Network effective from 1 April 2024
- 1.2 This Pricing Schedule is made up of five parts:
 - Part A – Price Category information applying to all Regions;
 - Part B – Price Categories for the Western Region only;
 - Part C – Price Categories for the Eastern Region only;
 - Part D – Meter Configuration;
 - Part E – Streetlights / Unmetered Supply

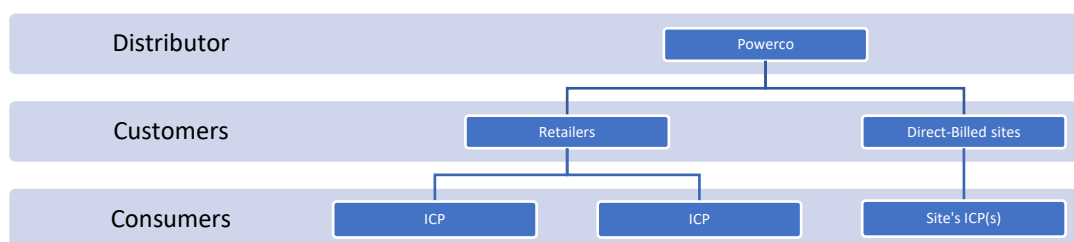
2.0 Interpretation

- 2.1 All charges are exclusive of GST
- 2.2 All times stated in this Pricing Schedule are in New Zealand Daylight Saving Time

3.0 Definitions

- 3.1 **“Anytime Maximum Demand” (AMD)** means the Consumer's single highest kW peak occurring any time in the 12-month period from 1 September 2022 to 31 August 2023, the result of which is applied in the subsequent Price Year commencing 1 April 2024
- 3.2 **“Average Demand Level” (ADL)** means the Consumer's average level of kW demand across the 12-month period from 1 September 2022 to 31 August 2023, the result of which is applied in the subsequent Price Year commencing 1 April 2024
- 3.3 **“Code”** see “Electricity Industry Participation Code”

- 3.4 **“Connection”** or **“Point of Connection”** means each point of connection at which a supply of electricity may flow between the Distribution Network and the Consumer’s Installation, as defined by the Distributor
- 3.5 **“Consumer”** means the end user of electricity, where the electricity is delivered via the Distribution Network, and is generally at the ICP-level
- 3.6 **“Consumption Data”** means data, provided by the Retailer to the Distributor in the EIEP format as required under the Network Agreement, showing details of the measured electricity consumption on the Distribution Network(s) to which the Network Agreement applies
- 3.7 **“Consumption Data Due Date”** means the date the Retailer must provide Consumption Data
- 3.8 **“Consumption Month”** means the month to which Consumption Data relates
- 3.9 **“Controlled Price Category”** or **“Controlled Tariff Option”** means a Price Category or Tariff Option allocated to an ICP where the ICP meets the criteria set out in paragraph 28.0 of this Pricing Policy
- 3.10 **“Current Month”** means the month in which the charges to the Retailer are being invoiced
- 3.11 **“Customer”** means a Retailer or direct-billed Consumer, as illustrated in the hierarchy below:



- 3.12 **“Default Interest”** means interest on the amount payable, at the Default Interest Rate, from the due date for payment until the date of payment of that amount to the relevant party accruing daily and compounded monthly
- 3.13 **“Default Interest Rate”** means the Interest Rate plus 5% per annum, provided that the Default Interest Rate must not be less than 5% per annum
- 3.14 **“Delivery Charges”** means the fixed and variable charges levied by the Distributor on Customers for the use of the Distribution Network, as described in this Pricing Policy
- 3.15 **“Demand”** means the rate of expending electrical energy expressed in kilowatts (kW) or kilovolt amperes (kVA)
- 3.16 **“Distributed Generation”** or **“Embedded Generation”** means electricity generation that is connected and distributed within the Network

- 3.17 **“Distributed Generator”** or **“Embedded Generator”** means an electricity generation plant producing Embedded Generation
- 3.18 **“Distribution Network”** or **“Network”** means:

The Distribution Network is connected to the Transpower transmission grid at the following GXP:

EASTERN REGION: VALLEY	Arapuni (ARI1101) Hinuera (HIN0331) Kinleith (KIN0331 and KIN0112) Kopu (KPU0661) Piako (PAO1101) Waihou (WHU0331) Waikino (WKO0331)
EASTERN REGION: TAURANGA	Tauranga (TGA0111 and TGA0331) Mt Maunganui (MTM0331) Te Matai (TMI0331) Kaitemako (KMO0331)
WESTERN REGION: WAIRARAPA	Greytown (GYT0331) Masterton (MST0331)
WESTERN REGION: MANAWATU	Bunnythorpe (BPE0331) Linton (LTN0331) Mangamaire (MGM0331)
WESTERN REGION: TARANAKI	Carrington (CST0331) Huirangi (HUI0331) Hawera (HWA0331) Opunake (OPK0331) Stratford (SFD0331)
WESTERN REGION: WANGANUI	Brunswick (BRK0331) Marton (MTN0331) Mataroa (MTR0331) Ohakune (OKN0111) Wanganui (WGN0331) Waverley (WVY0111)

- 3.19 **“Distributor”** means Powerco Limited, as the operator and owner of the Distribution Networks, and includes its subsidiaries, successors, and assignees
- 3.20 **“EIEP”** means the regulated and non-regulated Electricity Information Exchange Protocols published by the Electricity Authority
- 3.21 **“Electricity Industry Participation Code”** or **“Code”** means the rules made by the Electricity Authority under Part 2 of the Electricity Industry Act 2010, as may be amended from time to time
- 3.22 **“Electrical System”** means the Distributor’s overhead and underground electricity distribution and sub-transmission power system network.

- 3.23 **“Embedded Network”** means an electricity distribution network that is owned by someone other than the Distributor, where Consumers have ICPs allocated and managed by the embedded network owner (or another Code participant appointed for the purpose), and consumers within the network have the ability to switch Retailers
- 3.24 **“Full Replacement File” (R)** means a Consumption Data file that is intended to fully replace a previously submitted Initial File in EIEP1
- 3.25 **“Grid Exit Point” (GXP)** means a point of connection between Transpower’s transmission system and the Distributor’s Network
- 3.26 **“GST”** means Goods and Services Tax, as defined in the Goods and Services Tax Act 1985
- 3.27 **“Half-Hour Metering” (HHR)** see **“Time-Of-Use Metering” (TOU)**
- 3.28 **“High-Voltage” (HV)** means voltage above 1,000 volts, generally 11,000 volts, for supply to Consumers
- 3.29 **“High-Voltage (HV) Metering Units”** means the collective term used to describe the Voltage and Current Transformers used primarily for transforming and isolating high voltages and currents into practical and readable quantities for use with revenue-metering equipment
- 3.30 **“Initial File” (I)** means the initial Consumption Data reported for an ICP, for a specific consumption period in EIEP1 or EIEP3 format
- 3.31 **“Installation Control Point” (ICP)** means a Point of Connection on the Distributor’s Network, which the Distributor nominates as the point at which a Retailer is deemed to supply electricity to a Consumer, and has the attributes set out in the Code
- 3.32 **“Installed Capacity”** means the greater of the fused capacity, and the sum of installed transformer capacity (nameplate rating), where transformer/s are dedicated to the Connection
- 3.33 **“Interest Rate”** is defined in the Default Distributor Agreement, and broadly means the 3-month bid rate from a Reuter’s (or similar) screen page BKBM
- 3.34 **“kVA”** means kilovolt-ampere
- 3.35 **“kVAh”** means kilovolt-ampere hour
- 3.36 **“kVAr”** means kilovolt-ampere reactive
- 3.37 **“kW”** means kilowatt
- 3.38 **“kWh”** means kilowatt hour
- 3.39 **“Lighting Control Equipment”** means any equipment (including meters, receivers, relays, and ripple control receivers) wherever situated within a Region, designed to receive control signals for council or NZTA street lighting, or under-verandah lights
- 3.40 **“Load Control Equipment”** means any equipment (including meters, receivers, relays, and ripple control receivers) wherever situated within a region, designed to receive Load Management Service signals. Equipment designed to receive signals

to control street lighting is not considered to be Load Control Equipment and is defined as Lighting Control Equipment.

- 3.41 **“Load Management Service”** means providing a signal for the purpose of reducing or interrupting delivery of load to all or part of a Consumer’s premises within any Region
- 3.42 **“Low Fixed Charge Price Categories”** means the Price Categories that comply with the Electricity (Low Fixed Charge Tariff Option for Domestic Consumers) Regulations 2004, or as amended from time to time. Refer to the definition below for paragraph references.
- 3.43 **“Low Fixed Charge Tariff Options”** means the Tariff options for Delivery Charges described in paragraphs 20.0 and 22.0 and subject to the conditions set out in paragraph 25.0 of this Pricing Schedule
- 3.44 **“Low Voltage” (LV)** means voltage of value up to 1,000 volts, generally 230 or 400 volts for supply to Consumers
- 3.45 **“MVA”** means megavolt-ampere
- 3.46 **“Network Agreement”** means the Default Distributor Agreement, or any alternative agreements entered into pursuant to the Code, of which this Pricing Policy forms a part
- 3.47 **“Partial Replacement File” (X)** means a Consumption Data file that adds additional ICP consumption records to a previously submitted Initial File and/or replaces specific ICPs records within the EIEP1 or EIEP3 file only
- 3.48 **“Payment Month”** means the month in which the Retailer must remit money in respect to the Current Month’s charges. For electricity Retailers, the Payment Month is the same month as the Current Month.
- 3.49 **“Peak Coincident Demand” (PCD)** is the Consumer’s average demand during the top 100 peak periods observed on Powerco’s network. The peak periods are observed between 1 September 2022 and 31 August 2023 for the Price Year effective 1 April 2024. The PCD is used in calculating the Delivery Charges of a Consumer on Price Categories such as V40, T50, V60, T60 in the Eastern Region and W50, and W60 Price Categories in the Western Region.
- 3.50 **“Point of Connection”** means the point at which electricity may flow between the Network and the Consumer’s Installation and to which an Installation Control Point (ICP) is allocated
- 3.51 **“Powerco”** means Powerco Limited and any of its subsidiaries, successors, and assignees
- 3.52 **“Power Factor”** is the ratio of active energy, measured in kilowatts (kW), to apparent energy, measured in kilovolt amperes (kVA). Reactive power, measured in kilovolt amperes reactive (kVAR), results from a non-parity power factor and may incur charges.
- 3.53 **“Price Category”** means the relevant price category selected by the Distributor from this Pricing Schedule to define the Delivery Charges applicable to a particular ICP

- 3.54 **“Pricing Policy”** refers to this overall document, which is referenced in Schedules 2 and 7 of the Network Agreements
- 3.55 **“Pricing Schedule”** refers to Section One of this document
- 3.56 **“Price Year”** means the 12-month period between 1 April and 31 March
- 3.57 **“Processing Month”** means the month in which the Distributor processes the relevant data files
- 3.58 **“RAB” or “Regulatory Asset Base”** means the asset register and values that are accounted for, and reported on, in accordance with the regulatory framework set by the Commerce Commission
- 3.59 **“Reconciliation Manager” (RM)** means the person appointed from time to time as the Reconciliation Manager pursuant to the Code or such other person from time to time to whom metering data in respect of electricity is to be sent pursuant to the Code
- 3.60 **“Recoverable Costs”** has the meaning defined in the Electricity Distribution Services Input Methodologies Determination 2012, issued pursuant to Part 4 of the Commerce Act 1986
- 3.61 **“Region”** means the Eastern Region or the Western Region as the case may be
- 3.62 **“Registry”** means the Electricity Authority central Registry
- 3.63 **“Replacement Data”** means Full Replacement Files or Partial Replacement Files
- 3.64 **“Residential Connection”** means a premise that:
- (a) Is used or intended for occupation mainly as a place of residence (for example, not mainly as a business premises);
 - (b) Is the principal place of residence of the Consumer who contracts with the Retailer to purchase electricity for their use (this excludes holiday homes and other non-permanent places of residence);
 - (c) Is a domestic premises as defined by Section 5 of the Electricity Industry Act 2010;
 - (d) Is not a building ancillary to a person’s principal place of residence (for example, a shed or garage) that is separately metered; and,
 - (e) Is not exempted from Low-Usage Tariff Option coverage under an exemption granted under the Electricity (Low-Fixed Charge Tariff Option for Domestic Consumers) Regulations 2004
- 3.65 **“Retailer”** means the supplier of electricity to Consumers with installations connected to the Distribution Network
- 3.66 **“Tariff Option”** means the price option within a Price Category where such a Price Category provides for Retailer choice amongst two or more options, subject to a particular configuration of metering and Load Control Equipment
- 3.67 **“Temporary Accommodation”** means a non-primary place of residence in the context of the Electricity (Low-Fixed Charge Tariff Option for Domestic Consumers) Regulations 2004, such as holiday homes and other non-permanent places of

residence that are predominantly not business premises. This definition, along with any relevant conditions noted in this document, applies to the following Price Categories: V08.

- 3.68 **“Time-Of-Use Metering” (TOU)** (also referred to as HHR metering) means metering that measures the electricity consumed for a particular period (usually half-hourly) and complies with Part 10 of the Code. For the purposes of this document *TOU Metering* means a metering installation category of 2 or greater, as per the categories defined in the Code, that is capable of recording kVAr and/or kVAh.
- 3.69 **“Trader”** see Retailer
- 3.70 **“Transmission Rental Rebates”** means the economic value adjustment and the loss and constraint excesses rebated to the Distributor, in respect of a Distribution Network, by Transpower
- 3.71 **“Uncontrolled Price Category”** or **“Uncontrolled Tariff Option”** means a Price Category or Tariff Option allocated to an ICP where the ICP does not meet the criteria set out in paragraph 28.0

4.0 ICP Status

- 4.1 The status of an ICP, as recorded on the Registry, is managed by Distributors and Retailers. The ICP lifecycle, billing status and when charges are applicable for each status is detailed below:
 - (a) New (999) – Newly created ICP, Delivery Charges do not apply.
 - (b) Ready (000) – Network is electrically connected, Delivery Charges do not apply
 - (c) Active (002) – Energised. Electricity is flowing, Delivery Charges applicable
 - (d) Inactive (001)
 - 05 – Reconciled elsewhere. Delivery Charges do not apply.
 - 06 – Electrically disconnected ready for decommissioning. Delivery Charges do not apply.
 - 07 – Electrically disconnected remotely by AMI meter. Delivery charges do not apply.
 - 08 – Electrically disconnected at pole fuse. Delivery charges do not apply.
 - 09 - Electrically disconnected due to meter disconnected. Delivery charges do not apply.
 - 10 - Electrically disconnected at meter box fuse. Delivery charges do not apply.
 - 11 - Electrically disconnected at meter box switch. Delivery charges do not apply.
 - 12 – New connection in Progress. Transitory connection state, fuse pending installation. Delivery Charges do not apply.
 - (e) Decommissioned (003)
 - 01 – Set up in error. Delivery Charges no longer apply.

- 02 – Installation dismantled – supply physically dismantled, meets requirements of Powerco permanent disconnection standard. Delivery Charges do not apply.
- 03 – ICP amalgamation. Delivery Charges no longer apply.

5.0 Selection of Price Category

- 5.1 The Distributor will be entitled to determine which Price Category will apply to an ICP. In determining which Price Category should apply to an ICP, the Distributor will consider the Consumer's Connection, the information provided by the Consumer or their representative before application as to the expected load, the Consumer's demand profile and capacity requirements, and any other relevant factors.
- 5.2 If an ICP becomes eligible for a different Price Category, but:
 - (a) not ineligible for its current Price Category, or
 - (b) the Distributor is not made reasonably aware of this change in eligibility,then a review or re-allocation should not be expected to occur.
- 5.3 If the Retailer reasonably considers that a Price Category has been inappropriately allocated to an ICP, the Retailer will notify the Distributor and the Distributor will advise the Retailer, within 10 working days, whether it agrees to allocate a different Price Category to that ICP. The Retailer will provide the Distributor with the reasons why it considers the Price Category has been inappropriately allocated to the ICP, and the Distributor will provide to the Retailer information relevant to its decision.
- 5.4 Where the Distributor reasonably considers that a different Price Category should be allocated to a particular ICP:
 - (a) The Distributor will notify the Retailer, including the reasons why it considers the Price Category allocated to the ICP should be changed; and
 - (b) Unless the Retailer can provide evidence to the Distributor's reasonable satisfaction within 10 working days of the Distributor's notice that the current Price Category is appropriate, the Distributor will be entitled to allocate the Price Category that it considers appropriate to that ICP and to commence charging the Retailer for Distribution Services in accordance with that Price Category after a further 40 working days; and
 - (c) The Distributor will provide to the Retailer information relevant to its decision.
- 5.5 A Retailer supplying a Consumer may request a change to another Price Category only once in any 12 consecutive month period. For example, a residential Consumer changing to a Low Fixed Charge Price Category, from a General Price Category, and changing back to a General Price Category within a 12-month period may incur a Price Category Change Fee as set out in paragraph 8.1.

6.0 Transmission Rental Rebates (aka SRAM aka LCE)

- 6.1 Powerco receives credits from Transpower each month, which are also referred to as *Settlement Residual Allocation Methodology* 'SRAM' payments, or *Loss and Constraint Excess* 'LCE' payments. These are distributed to Customers as follows:
 - (a) Allocated in proportion to their respective kWh volumes, by Region, using the initial billing volumes that correspond with the TPNZ credit note month

- (b) Allocations are not subject to subsequent revisions of billing volumes

7.0 New Subdivision Charges

- 7.1 Subject to the Electricity (Low Fixed Charge Tariff Option for Domestic Consumers) Regulations 2004, where the Distributor extends the Distribution Network to establish new Connections in a subdivision development, the Distributor may notify charges that will apply specifically to those new Connections and the dates from which such charges are to be effective.

8.0 Miscellaneous Fees

- 8.1 The following charges are payable by the Retailer or Customer, although may be waived at the Distributor's discretion:

MISCELLANEOUS FEES	CHARGE
A Price Category or Tariff Option Change Fee: Payable by the requesting Retailer when a current Consumer's Price Category or Tariff Option is changed more than once in a 12-month period	\$30 per Point of Connection (payable for the second and each subsequent change)
B Incorrect or Incomplete Consumption Data Fee: Payable where Consumption Data, to be provided by the Retailer to the Distributor, does not comply with the requirements of the Network Agreement. It will be charged based on the actual time spent by a billing analyst or the cost of engaging external consultants/experts to review, correct, validate, and reconcile the information.	\$100 per hour
C Late Consumption Data Fee: Payable where the Consumption Data required to be provided by the Retailer to the Distributor is received by the Distributor after the due date for the receipt of that Consumption Data. The charge is based on the Distributor's cost of funds and the cost of using billing analysts to address the delay.	The reasonable costs incurred by the Distributor (including costs associated with late receipt of payment due to late invoicing) as a result of the late data supply. \$100 per hour for each billing analyst's hour required to address the late supply of data.
D Ad hoc Report Fee: Payable where a Retailer requests an ad hoc report that is not generally supplied by the Distributor	\$100 per hour or such other fee as may be agreed
E Non-Network Fault Fee: All non-Electrical Systems fault work, or Retailer or Customer services not listed above	Charged to the Customer on a time and materials basis, at market rates, subject to a minimum of \$150
F Seasonal and Temporary Disconnection Fee: Charges to consumers are allocated based on a full Price Year, and therefore intended to apply for a period of 12 months.	A fee equivalent to the fixed charges applicable during the period of disconnection

MISCELLANEOUS FEES	CHARGE
Where an installation is disconnected and subsequently reconnected within a 12-month period, the Distributor may apply a connection fee equivalent to the fixed charges applicable during the period of disconnection.	
G Temporary Safety Disconnections:	
No fee is applicable for a temporary safety disconnection conducted by the Distributor in accordance with the conditions set out in Powerco standards 170S008	Free

9.0 Distributed/Embedded Generation

- 9.1 Any person wanting to connect a Distributed/Embedded Generator to the Network must apply to the Distributor for consent to such connection. All applications for the connection of Distributed/Embedded Generators to the Network will be assessed by the Distributor on a case-by-case basis, having regard to Part 6 of the Electricity Industry Participation Code 2010, Powerco's Distributed Generation Policy and the circumstances that apply in each case.
- 9.2 Powerco's Distributed Generation Policy is published on Powerco's website at: <https://www.powerco.co.nz/get-connected/distributed-generation/>
- 9.3 Any Distributed/Embedded Generator connected to the Network is subject to Part 6 of the Electricity Industry Participation Code 2010 and Powerco's Distributed Generation Policy, or a separate Distributed/Embedded Generation Network Connection Agreement.
- 9.4 Export volumes for Distributed Generation connections must be submitted as directional volume within the EIEP1 or EIEP3 Consumption files (no "netting off" should apply to the load or generation volumes in these files)
- 9.5 Any Distributed Generation connection with a Power Factor of less than 0.95 lagging may attract a reactive power charge as detailed in paragraph 15.0. For full details, please refer to Powerco's Distributed Generation Policy.

10.0 Embedded Networks

- 10.1 The Price Category for an Embedded Network will be determined on the combined installed or connected capacity, which may result in asset-based pricing being applied. The pricing may include a minimum level of chargeable demand applied to the connection, along with other terms as part of a separate agreement.

11.0 Demand-Based Pricing Methodology

- 11.1 W29 applies automatically to existing E100 ICPs, and to new/upgraded Connections on any of the Western Region Distribution Networks with a capacity of greater than 200 kVA and less than or equal to 299 kVA, which has been approved by the Distributor and is subject to the following conditions:
 - (a) The Connection must have installed TOU metering; and,

- (b) A minimum chargeable demand of 30 kW will apply

11.2 Calculation of W29 charges:

- (a) Fixed Daily Charge (FDC) – applied to each ICP
- (b) E1DIST* and E1TRAN* – these charges are based on the Anytime Maximum Demand (AMD) of a given connection, with:

The chargeable AMD being (the higher of) 30 kW or the actual demand

New W29 Connections, where less than 12 months data is available, the chargeable AMD being estimated by the Distributor based on an assessment of the plant and machinery located on the site, demand from similar sites across the industry and any estimates of demand provided by the Consumer

12.0 Asset-Based Pricing Methodology

- 12.1 This applies to large Powerco Consumers in the Eastern and Western Regions by default, and smaller Consumers that may be better suited to an asset-based price. Powerco groups its large Consumers into the following Price Categories:

Western Region: Installed capacity 300 kVA and above:
W50, W60

Eastern Region: Installed capacity 300 kVA and above:
T50, T60, V40, V60

Smaller Asset-based pricing may also apply to Connections with less than 300kVA of installed capacity at the Distributor's discretion, for instance:

Connections with Distributed or Embedded Generation;

Connections with backup supply or significant dedicated assets;

Electric Vehicle Charging Stations

- 12.2 The installed capacity is calculated as the greater of the fused capacity, and the sum of installed transformer capacity (nameplate rating), where the transformer/s are dedicated to the Connection.

- 12.3 The methodology for setting Delivery Charges under asset-based pricing comprises the following components:

Measurement of Consumer demand;

Asset valuation and allocation;

Return of and on capital;

Allocation of maintenance costs; and

Allocation of indirect costs (fixed and variable)

- 12.4 Asset-based charges are set on the basis of a full Price Year and are typically determined as a fixed daily charge, set for the 12-month period starting 1 April, but are subject to periodic review based on site-specific information, including electricity demand and volume

- 12.5 Powerco bases some Consumer charges on level of demand and network usage, measured using AMD, PCD, ADL and capacity. The demands applied to new

Consumers are estimated as per paragraph 12.7, and will revert to actual values for subsequent Price Years.

12.6 Powerco's asset-based pricing involves allocating assets to Consumers using two main categories:

- (a) On-site assets: Dedicated assets behind the Point of Connection and normally include transformers and switchgear. These assets are allocated fully to the Consumer to whom they relate.
- (b) Upstream assets: The meshed assets of the network. These assets are usually shared between a number of Consumers and generally may be categorised as: feeder assets; substation assets; subtransmission assets; and Grid Exit Point (GXP) assets. These assets are allocated across the Consumers that they serve.

12.7 When a Connection enters an asset-based load group:

- Powerco will estimate the AMD, PCD, and ADL for the new or upgraded site. This estimate will be based on an assessment of the plant and machinery located on the site, demand from similar sites across the industry and any estimates of demand provided by the Consumer.
- The estimated demand will apply for the current Price Year (ie between the later of 1 April or the connection date for the upgraded assets and 31 March of the subsequent year).
- The estimated demand will assume full demand from the time of the installation of the asset (rather than ramping up over a period of time), unless otherwise agreed between Powerco and the Consumer, or their representative, at the time of Powerco's approval of the request for site connection or alteration.
- The estimated demand will continue to apply in the subsequent year if the upgraded site has not been connected and operational for the full duration of the applicable measurement period, unless otherwise agreed between Powerco and the Consumer or their representative, at the time of Powerco approval of the request for site connection or alteration.
- New prices will be effective from network livening (ie Active status).

12.8 The following Powerco policies apply when a site exits an asset-based load group or revision to charges is requested:

- If a Consumer intends exiting a site, and the Retailer is notified of this intention, the Retailer must notify Powerco as soon as practical so that final charges can be determined and levied in the forthcoming billing run.
- Powerco, at its discretion, may allow a Consumer to exit the load group when the site downgrades its installed capacity. Alternatively, Powerco may require the site to continue to the end of the Price Year in the current load group at the current peaks, for instance if an upgrade to the site has only recently occurred.
- Powerco may leave the Consumer in the same load group and downgrade peak estimates in instances where there is no removal of on-site assets but there will be a reduction in loading on the Network.

- Where there is a bona fide change in Consumer at a premises (ie new entity), the Retailer may apply for, and Powerco will at its discretion undertake, a review of the asset-based charges once during the Price Year to reflect the change arising from an alteration in AMD and the expected change in PCD and ADL.

13.0 Building Block Methodology (“BBM”) Asset-Based Pricing

- 13.1 This pricing methodology applies to very large (typically >4MVA) Consumers in both Regions. These Consumers will have a direct contractual relationship with Powerco for a defined term. BBM asset-based pricing will be available primarily where:
- A step change development and consequently investment is needed, but the increase in demand may not be as significant; or
 - A new connection requires significant investment
- 13.2 The BBM asset-based pricing comprises the following input components:
- Return on capital investment, plus accounting depreciation in period or year;
 - Sub-transmission cost allocation of direct and indirect costs for sub-transmission asset utilisation in period or year;
 - Operating and maintenance costs;
 - Tax adjustment; and
 - Pass through of Recoverable Costs such as transmission charges

14.0 Data File Requirements

- 14.1 Powerco requires data files for non-half hourly ICPs to be provided in the latest regulated version of the EIEP1, and EIEP3 protocols for half hourly data
- 14.2 Powerco requires EIEP1 submission files from Retailers to be in the “Replacement Normalised” format, which aligns to the Reconciliation Manager process
- 14.3 From 1 April 2021, Powerco no longer allows EIEP1 submission files in the “Incremental Normalised” format. It is expected that all Retailers implement a transition plan to move away from “Incremental Normalised” to “Replacement Normalised” prior to this date.
- 14.4 Powerco uses the dash (-) as a file separator between the Price Category and the Tariff Option for non-half hourly data, as of 1 April 2020. Prior to this the tilde (~) was used as a separator.
- 14.5 In the Western Region, fixed charges and variable consumption should be provided to Powerco as outlined in paragraphs 18.0 and 30.0. In the Eastern region, variable consumption should be provided as outlined in paragraphs 23.0 and 30.0.

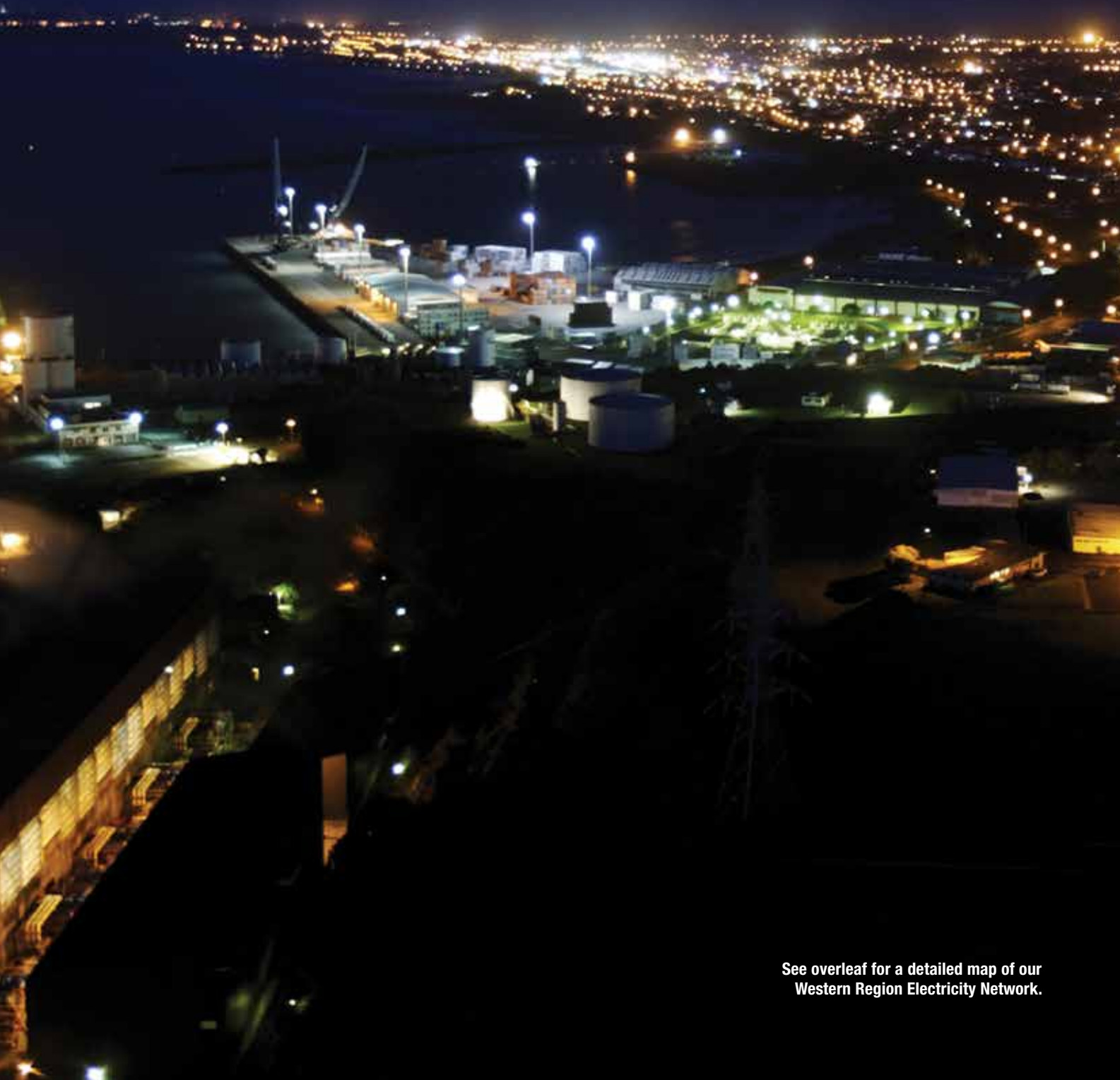
15.0 Reactive Power Charges (formerly ‘Power Factor Charges’)

- 15.1 If a Consumer’s Power Factor at a Connection is less than 0.95 lagging, the reactive power calculation will result in a per kVAr charge, as set out in the tables in paragraphs 17.0, 20.0, and 22.0

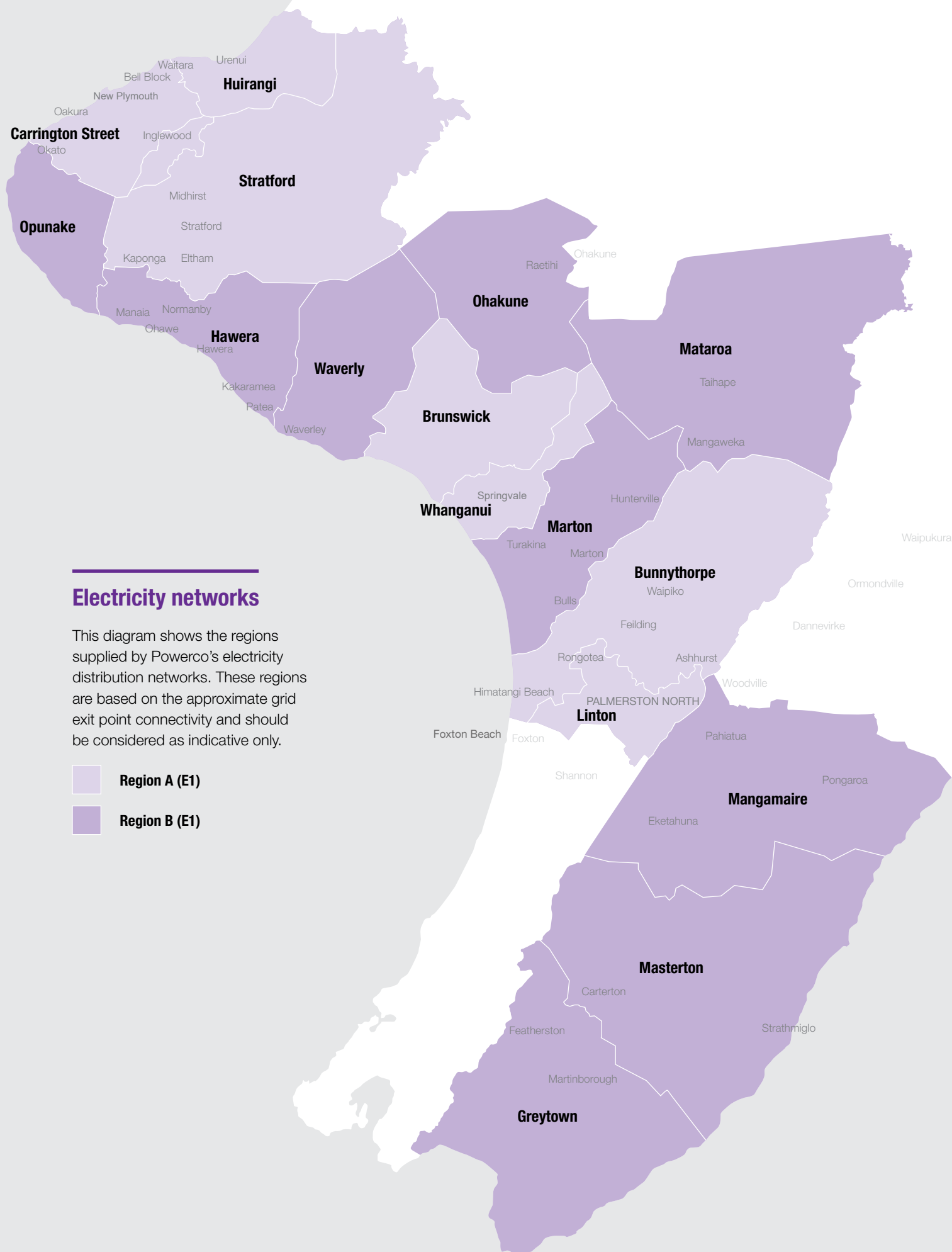
- 15.2 The kVAr chargeable quantity represents the largest monthly difference between the kVAr amount recorded in any one half-hour period, and one third of the kW demand recorded in the same half-hour period. The charge is applicable only during weekdays, between 7 am and 8 pm (trading periods 15 to 40 inclusive).
- 15.3 The Distributor, subject to 15.4 below, will apply reactive power charges for ICPs with TOU metering, that are on:
- For the Western Region, Price Categories W29, W50, W60
 - For the Eastern Region, Price Categories V28, V40, V60, T28, T50, T60
- 15.4 The Distributor, at its discretion, may elect not to levy reactive power charges on a particular ICP. This will typically occur where an ICP has onsite generation which interferes with accurately measuring the network impact of reactive power.

An ICP will be exempted from reactive power charges through moving it to a Price Category ending with "N". For instance, an ICP with the Price Category V28 would be moved to Price Category "V28N", where no reactive power charges are being levied.

Western Region



See overleaf for a detailed map of our
Western Region Electricity Network.



Electricity networks

This diagram shows the regions supplied by Powerco's electricity distribution networks. These regions are based on the approximate grid exit point connectivity and should be considered as indicative only.

- Region A (E1)**
- Region B (E1)**

Part B: Price Categories and Pricing Schedules

16.0 Western Region Distribution Networks

16.1 The Western Distribution Network Price Categories and Tariff Options described below are subject to the conditions set out in paragraphs 17.0, 24.0 to 27.0, and elsewhere in this document

16.2 Western Region networks are split between Zone A and Zone B:

Zone	ICPs supplied from following GXPs:
A	BRK0331, BPE0331, CST0331, HUI0331, LTN0331, SFD0331, WGN0331
B	GYT0331, HWA0331, MGM0331, MTN0331, MST0331, MTR0331, OKN0111, OPK0331, WVY0111

16.3 Western Region Time Zone Definitions:

Western Region Distribution Networks	
'Winter' Months	April – September
'Summer' Months	October – March
TOU Peak Period 'PEAK'	Weekdays (Monday-Friday including public holidays): 07:00am – 11:00am (periods 15 to 22) and 5:00pm – 9:00pm (periods 35 to 42)
TOU Off-Peak Period 'OFPK'	Weekdays (Monday-Friday including public holidays): 11:00am – 5:00pm (periods 23 to 34) and 9:00pm – 7:00am (periods 43 to 14) Weekends (Saturday & Sunday) all day and night

	WINTER							SUMMER						
	April - September							October - March						
	Mon	Tue	Wed	Thu	Fri	Sat	Sun	Mon	Tue	Wed	Thu	Fri	Sat	Sun
12am-7am	OFPK							OFPK						
7am-11am	PEAK					OFPK		PEAK					OFPK	
11am-5pm	OFPK							OFPK						
5pm-9pm	PEAK					OFPK		PEAK					OFPK	
9pm-12am	OFPK							OFPK						

16.4 Western Region: GXP to ICP change

From 1 April 2024 the Western Region will move to a full ICP pricing/billing methodology. This change also involves creating a more granular pricing structure, with different capacity bands than were in use.

Information limitations regarding fusing/connection size mean that a single migration of all ICPs is not possible, as they cannot all be accurately allocated to the intended Price Categories. Therefore some Price Categories will have a transition period, where they will overlap with others, and/or contain ICPs that are to be moved to other Price Categories over time.

The following table illustrates the migration and transition of ICPs, including the examples below:

- Existing 3ph100A connections were classed as E1, and will be migrated to W06(A/B), and then transitioned to W22(A/B) over time
 - New 3ph100A connections will start as W22A/B
- E100 had covered existing ICPs of 101-300kVA, and these migrate to W29, to be joined by new connections of 200-299kVA only
 - Those outside the new W29 criteria will transition to W22 and W50 as appropriate

FY24 structure	E1		E100		W50
FY25 migration	W05/06		W29		W50
FY25 transition	No change	W06 to W22	W29 to W22	No change	W29 to W50
FY25 structure	W05/06	W22	W29	W50	

16.5 GXP-ICP transition process

The ranked priorities for the GXP-ICP change are to:

- Execute the shift from GXP to ICP billing
- Split and migrate E1 ICPs to low user and standard user Categories
- Apply the FY25 criteria to all new ICPs
- Identify W06 ICPs that should transition to W22 (eg 3ph100A)
- Identify W29 ICPs that should transition to W22 (eg 3ph200A)
- Identify W29 ICPs that should transition to W50 (eg 300kVA TX)

Priorities 1-3 will be achieved effective 1 April 2024, however the others will occur during FY25, and potentially beyond. For example, the process for priority 4 involves identifying ~2,000 ICPs from a group of 180,000 ICPs, and potentially requiring site visits to confirm fuse sizing. As this change may trigger significant pricing impacts for affected customers, and/or rationalisation of connection sizes, the process will be adapted as it progresses.

17.0 Western Region Price Categories and Prices

Zone A GXP: BRK0331, BPE0331, CST0331, HUI0331, LTN0331, SFD0331, WGN0331

Price Category Code	Description	Price Component Code	Register Content Code/ Period of Availability	Data File Format Availability	Delivery Price (ex GST)	Unit of Measure
W01A	Unmetered Load¹			<i>EIEP1</i>		
	Daily Charge	W01A			45.00	c/day
	Variable Charge	W01A-UNML			11.98	c/kWh
W02A	Unmetered Streetlights (NZTA / Council only)			<i>EIEP1</i>		
	Daily Charge	W02A			10.00	c/fixture /day
	Variable Charge	W02A-UNML			0.00	c/kWh
W05A²	Residential Low Fixed Charge			<i>EIEP1</i>		
	Daily Charge	W05A-FDC			60.00	c/day
	TOU Peak ³ – Winter	W05A-PEAK			17.90	c/kWh
	TOU Peak ³ – Summer	W05A-PEAK			16.40	c/kWh
	TOU Off-Peak ³	W05A-OFPK			6.76	c/kWh
	Controlled	W05A-CTRL	CN17	17 hrs per day	5.26	c/kWh
	Unmetered	W05A-UNML			11.04	c/kWh
	Uncontrolled	W05A-24UC			9.99	c/kWh
	Distributed Generation	W05A-24DG	EG24	24 hrs per day	0.00	c/kWh
W06A	General – up to and including 3 Phase 63 amps (43 kVA)			<i>EIEP1</i>		
	Daily Charge	W06A-FDC			90.00	c/day
	TOU Peak ³ – Winter	W06A-PEAK			16.54	c/kWh
	TOU Peak ³ – Summer	W06A-PEAK			15.04	c/kWh
	TOU Off-Peak ³	W06A-OFPK			5.40	c/kWh
	Controlled	W06A-CTRL	CN17	17 hrs per day	3.90	c/kWh
	Unmetered	W06A-UNML			9.68	c/kWh
	Uncontrolled	W06A-24UC			8.63	c/kWh
	Distributed Generation	W06A-24DG	EG24	24 hrs per day	0.00	c/kWh
W22A	Commercial: 44 kVA – 199 kVA (up to 3 phase 250 amps)			<i>EIEP1</i>		
	Daily Charge	W22A-FDC			10.00	\$/day
	TOU Peak ³ – Winter	W22A-PEAK			15.05	c/kWh
	TOU Peak ³ – Summer	W22A-PEAK			13.20	c/kWh
	TOU Off-Peak ³	W22A-OFPK			5.02	c/kWh
	Controlled	W22A-CTRL	CN17	17 hours per day	4.52	c/kWh
	Uncontrolled	W22A-24UC			7.93	c/kWh
	Distributed Generation	W22A-24DG	EG24	24 hrs per day	0.00	c/kWh

Footnotes 1, 2, & 3 are at the end of the next page

GXP: GYT0331, HWA0331, MGM0331, MTN0331, MST0331, MTR0331, OKN0111, OPK0331, WVY0111

Price Category Code	Description	Price Component Code	Register Content Code/ Period of Availability	Data File Format Availability	Delivery Price (ex GST)	Unit of Measure
W01B	Unmetered Load¹			<i>EIEP1</i>		
	Daily Charge	W01B			45.00	c/day
	Variable Charge	W01B-UNML			15.39	c/kWh
W02B	Unmetered Streetlights (NZTA / Council only)			<i>EIEP1</i>		
	Daily Charge	W02B			11.00	c/fixture /day
	Variable Charge	W02B-UNML			0.00	c/kWh
W05B²	Residential Low Fixed Charge			<i>EIEP1</i>		
	Daily Charge	W05B-FDC			60.00	c/day
	TOU Peak ³ – Winter	W05B-PEAK			20.41	c/kWh
	TOU Peak ³ – Summer	W05B-PEAK			18.91	c/kWh
	TOU Off-Peak ³	W05B-OFPK			9.96	c/kWh
	Controlled	W05B-CTRL	CN17	17 hrs per day	8.46	c/kWh
	Unmetered	W05B-UNML			14.49	c/kWh
	Uncontrolled	W05B-24UC			12.99	c/kWh
	Distributed Generation	W05B-24DG	EG24	24 hrs per day	0.00	c/kWh
W06B	General (up to and including 3 Phase 63 amps)			<i>EIEP1</i>		
	Daily Charge	W06B-FDC			90.00	c/day
	TOU Peak ³ – Winter	W06B-PEAK			19.05	c/kWh
	TOU Peak ³ – Summer	W06B-PEAK			17.55	c/kWh
	TOU Off-Peak ³	W06B-OFPK			8.60	c/kWh
	Controlled	W06B-CTRL	CN17	17 hrs per day	7.10	c/kWh
	Unmetered	W06B-UNML			13.13	c/kWh
	Uncontrolled	W06B-24UC			11.63	c/kWh
	Distributed Generation	W06B-24DG	EG24	24 hrs per day	0.00	c/kWh
W22B	Commercial (greater than 3 Phase 63amps to 3 phase 250 amps)			<i>EIEP1</i>		
	Daily Charge	W22B-FDC			10.00	\$/day
	TOU Peak ³ – Winter	W22B-PEAK			17.31	c/kWh
	TOU Peak ³ – Summer	W22B-PEAK			15.46	c/kWh
	TOU Off-Peak ³	W22B-OFPK			7.90	c/kWh
	Controlled	W22B-CTRL	CN17	17 hours per day	7.40	c/kWh
	Uncontrolled	W22B-24UC			10.63	c/kWh
	Distributed Generation	W22B-24DG	EG24	24 hrs per day	0.00	c/kWh

1. Please refer to the unmetered supply schedule for additional information for unmetered ICP charges

2. These Price Categories and associated Tariff Options are only available to Residential Connections subject to the relevant conditions

3. TOU Peak and Off-Peak times defined in paragraph 16.3

Price Category: W29 (previously E100; see section 11.0 for details)

Existing Commercial TOU Connections with installed capacity of 101 – 300 kVA

New/upgraded Commercial TOU Connections with installed capacity of 200 – 299 kVA

Price Category Code	Zone	Description	Price Component Code	Delivery Price (ex GST)	Unit of Measure	Data File Type
W29	ALL	Daily Charge	W29-FDC	10.00	\$/ICP/day	EIEP3
		HV Metering Charge ¹	W29-CT/VT	4.54	\$/units/day	
		Variable Charge	W29-KWH	0.0173	\$/kWh	
		Reactive Power Charge ²	W29-PFC	7.00	\$/kVAr/month	
W29	A	CST0331, HUI0331, SFD0331				
		Distribution Charge	W29-E1DISTA	0.4264	\$/kW/day	EIEP3
		Transmission Charge ³	W29-E1TRANA	0.0307	\$/kW/day	
W29	B	HWA0331				
		Distribution Charge	W29-E1DISTB	0.5345	\$/kW/day	EIEP3
		Transmission Charge ³	W29-E1TRANB	0.0291	\$/kW/day	
W29	C	WVY0111				
		Distribution Charge	W29-E1DISTC	0.6023	\$/kW/day	EIEP3
		Transmission Charge ³	W29-E1TRANC	0.0851	\$/kW/day	
W29	D	OPK0331				
		Distribution Charge	W29-E1DISTD	0.6255	\$/kW/day	EIEP3
		Transmission Charge ³	W29-E1TRAND	0.2073	\$/kW/day	
W29	E	BRK0331, WGN0331				
		Distribution Charge	W29-E1DISTE	0.4131	\$/kW/day	EIEP3
		Transmission Charge ³	W29-E1TRANE	0.0327	\$/kW/day	
W29	F	MTN0331				
		Distribution Charge	W29-E1DISTF	0.4700	\$/kW/day	EIEP3
		Transmission Charge ³	W29-E1TRANF	0.0364	\$/kW/day	
W29	G	MTR0331, OKN0111				
		Distribution Charge	W29-E1DISTG	0.8572	\$/kW/day	EIEP3
		Transmission Charge ³	W29-E1TRANG	0.0620	\$/kW/day	
W29	H	MST0331, GYT0331				
		Distribution Charge	W29-E1DISTH	0.4646	\$/kW/day	EIEP3
		Transmission Charge ³	W29-E1TRANH	0.0334	\$/kW/day	
W29	I	BPE0331, LTN0331				
		Distribution Charge	W29-E1DISTI	0.3829	\$/kW/day	EIEP3
		Transmission Charge ³	W29-E1TRANI	0.0171	\$/kW/day	
W29	J	MGM0331				
		Distribution Charge	W29-E1DISTJ	0.5840	\$/kW/day	EIEP3
		Transmission Charge ³	W29-E1TRANJ	0.0806	\$/kW/day	

1. HV metering charges only apply to ICPs with Powerco-owned HV metering (noted as CTVT in the Registry's 'Installation Details')

2. Reactive Power Charge applies to all connections – see paragraph 15.0

3. Transmission Prices include Transmission charges and other recoverable costs such as council rates and industry levies

Price Category Code	Description	Price Component Code	Register Content Code/ Period of Availability	Data File Format Availability	Delivery Price (ex GST)	Unit of Measure
W50²	Large Commercial (typically 300 kVA – 1,499 kVA)			<i>EIEP3</i>		
	Distribution Charge	W50-DIST			POA	\$/day
	Transmission Charge ³	W50-TRANS			POA	\$/day
	Variable Charge	W50-KWH			0.00	\$/kWh
	Reactive Power Charge ²	W50-PFC			7.00	\$/kVAr/mth
W60²	Large Commercial (typically ≥ 1,500 kVA)			<i>EIEP3</i>		
	Distribution Charge	W60-DIST			POA	\$/day
	Transmission Charge ³	W60-TRANS			POA	\$/day
	Variable Charge	W60-KWH			0.00	\$/kWh
	Reactive Power Charge ²	W60-PFC			7.00	\$/kVAr/mth

2. Reactive power charges do not apply for any ICP on a Price Category ending in “N” – see paragraph 15.0

3. Transmission Prices include Transmission charges and other recoverable costs such as council rates and industry levies

18.0 Data File Requirements - Western Region

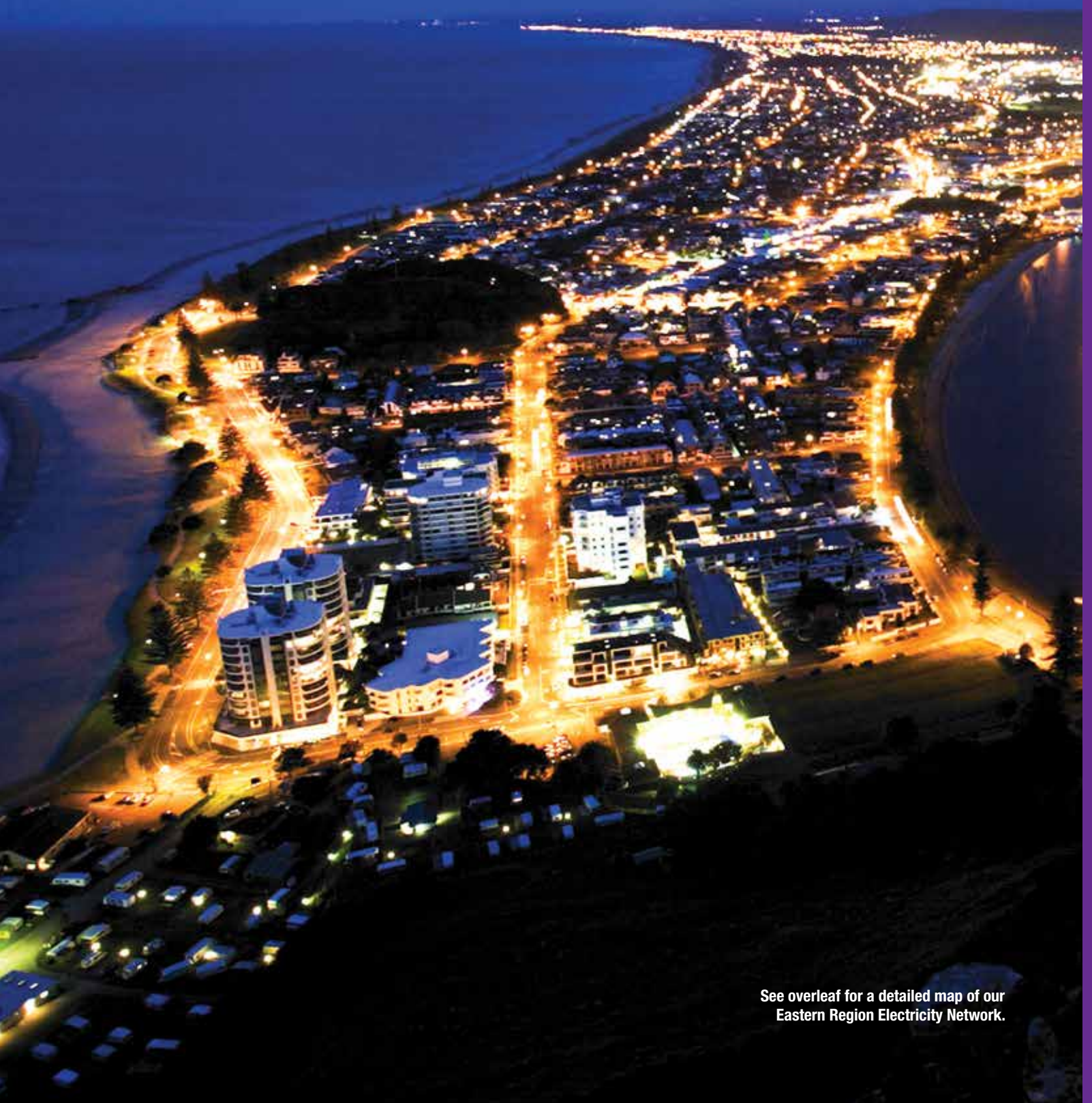
18.1 Fixed charges and variable consumption should be provided to Powerco via the EIEP1 file as follows:

Price Category Code	Description	Tariff Option	Price Component Code	Register Content Code / Period of Availability	Availability
W05A W05B W05*	Daily Charge	FDC	W05*-FDC		
	TOU Peak - Uncontrolled	PEAK	W05*-PEAK	7304	24 hours per day
	TOU Off-Peak - Uncontrolled	OFPK	W05*-OFPK	7304	24 hours per day
	Controlled	CTRL	W05*-CTRL	CN17	17 hours per day
	Night Only	OFPK	W05*-OFPK	CN8 & NO8	23:00 - 07:00
	Night with Boost	OFPK	W05*-OFPK	CN9 & NB9	+14:00 - 15:00
	Unmetered	UNML	W05*-UNML		24 hours per day
	Uncontrolled	24UC	W05*-24UC	UN24 D16 / N8 IN17 DIN16 / NIN8	24 hours per day
	Distributed Generation	24DG	W05*-24DG	EG24	24 hours per day
	Daily Charge	FDC	W06*-FDC		
W06A W06B W06*	TOU Peak - Uncontrolled	PEAK	W06*-PEAK	7304	24 hours per day
	TOU Off-Peak - Uncontrolled	OFPK	W06*-OFPK	7304	24 hours per day
	Controlled	CTRL	W06*-CTRL	CN17	17 hours per day
	Night	OFPK	W06*-OFPK	CN8 & NO8	23:00 - 07:00
	Night with Boost	OFPK	W06*-OFPK	CN9 & NB9	+14:00 - 15:00
	Unmetered	UNML	W06*-UNML		24 hours per day
	Uncontrolled	24UC	W06*-24UC	UN24 D16 / N8 IN17 DIN16 / NIN8	24 hours per day
	Distributed Generation	24DG	W06*-24DG	EG24	24 hours per day

The asterisk “*” represents either A or B, when referring to the ICP’s relevant Price Category

PAGE INTENTIONALLY LEFT BLANK

Eastern Region



See overleaf for a detailed map of our
Eastern Region Electricity Network.



19.0 Tauranga Distribution Network

19.1 The Tauranga Distribution Network Price Categories and Tariff Options described below are subject to the conditions set out in paragraphs 20.0, 23.0 to 27.0, and elsewhere in this document

19.2 Tauranga Distribution Network Time Zone Definitions:

Tauranga Distribution Network	
'Winter' Months	April – September
'Summer' Months	October – March
TOU Peak Period 'PEAK'	Weekdays (Monday-Friday including public holidays): 07:00am – 11:00am (periods 15 to 22) and 5:00pm – 9:00pm (periods 35 to 42)
TOU Off-Peak Period 'OFPK'	Weekdays (Monday-Friday including public holidays) 11:00am – 5:00pm (periods 23 to 34) and 9:00pm – 7:00am (periods 43 to 14) Weekends (Saturday & Sunday) all day and night

	WINTER							SUMMER						
	April - September							October - March						
	Mon	Tue	Wed	Thu	Fri	Sat	Sun	Mon	Tue	Wed	Thu	Fri	Sat	Sun
	OFPK							OFPK						
	PEAK					OFPK		PEAK					OFPK	
	OFPK							OFPK						
	PEAK					OFPK		PEAK					OFPK	
OFPK							OFPK							

20.0 Tauranga Network Price Categories and Prices

Price Category Code	Description	Price Component Code	Register Content Code/ Period of Availability	Data File Format Availability	Delivery Price (ex GST)	Unit of Measure
T01	Unmetered Load¹			<i>EIEP1</i>		
	Daily Charge	T01			45.00	c/day
	Variable Charge	T01-UNML			11.90	c/kWh
T02	Unmetered Streetlights (NZTA / Council only)			<i>EIEP1</i>		
	Daily Charge	T02			20.23	c/fixture/day
	Variable Charge	T02-UNML			0.00	c/kWh
T05S²	Residential Low Fixed Charge			<i>EIEP1</i>		
	Daily Charge	T05S-FDC			60.00	c/day
	TOU Peak ³ – Winter	T05S-PEAK			17.32	c/kWh
	TOU Peak ³ – Summer	T05S-PEAK			16.02	c/kWh
	TOU Off-Peak ³	T05S-OFPK			5.58	c/kWh
	Controlled	T05S-CTRL	CN17	17 hrs per day	4.08	c/kWh
	Unmetered	T05S-UNML			11.40	c/kWh
	Uncontrolled	T05S-24UC			9.34	c/kWh
	Distributed Generation	T05S-24DG	EG24	24 hrs per day	0.00	c/kWh
T06S	General (up to and including 3 Phase 63 amps)			<i>EIEP1</i>		
	Daily Charge	T06S-FDC			120.00	c/day
	TOU Peak ³ – Winter	T06S-PEAK			14.59	c/kWh
	TOU Peak ³ – Summer	T06S-PEAK			13.29	c/kWh
	TOU Off-Peak ³	T06S-OFPK			2.85	c/kWh
	Controlled	T06S-CTRL	CN17	17 hrs per day	1.35	c/kWh
	Unmetered	T06S-UNML			8.67	c/kWh
	Uncontrolled	T06S-24UC			6.61	c/kWh
	Distributed Generation	T06S-24DG	EG24	24 hrs per day	0.00	c/kWh
T22	Commercial (greater than 3 Phase 63 amps to 3 phase 250 amps)			<i>EIEP1</i>		
	Daily Charge	T22-FDC			11.99	\$/day
	TOU Peak ³ – Winter	T22-PEAK			13.83	c/kWh
	TOU Peak ³ – Summer	T22-PEAK			12.61	c/kWh
	TOU Off-Peak ³	T22-OFPK			2.82	c/kWh
	Controlled	T22-CTRL	CN17	17 hours per day	3.91	c/kWh
	Uncontrolled	T22-24UC			6.35	c/kWh
	Distributed Generation	T22-24DG	EG24	24 hrs per day	0.00	c/kWh
T28⁴	Commercial (200 – 299 kVA)			<i>EIEP3</i>		
	Daily Charge	T28-FDC			27.39	\$/day
	TOU Peak ³ – Winter	T28-PEAK			13.23	c/kWh

Price Category Code	Description	Price Component Code	Register Content Code/ Period of Availability	Data File Format Availability	Delivery Price (ex GST)	Unit of Measure
	TOU Peak ³ – Summer	T28-PEAK			12.07	c/kWh
	TOU Off-Peak ³	T28-OFPK			2.75	c/kWh
	Uncontrolled	T28-24UC			6.11	c/kWh
	Reactive Power Charge ⁴	T28-PFC			7.00	\$/kVAr/mth
	Distributed Generation	T28N-24DG	EG24	24 hrs per day	0.00	c/kWh
T50⁴	Large Commercial (300 – 1,499 kVA)			<i>EIEP3</i>		
	Distribution Charge	T50-DIST			POA	\$/day
	Transmission Charge ⁵	T50-TRANS			POA	\$/day
	Variable Charge	T50-KWH			0.00	\$/kWh
	Reactive Power Charge ⁴	T50-PFC			7.00	\$/kVAr/mth
T60⁴	Large Commercial (≥ 1,500 kVA)			<i>EIEP3</i>		
	Distribution Charge	T60-DIST			POA	\$/day
	Transmission Charge ⁵	T60-TRANS			POA	\$/day
	Variable Charge	T60-KWH			0.00	\$/kWh
	Reactive Power Charge ⁴	T60-PFC			7.00	\$/kVAr/mth

1. Please refer to the unmetered supply schedule for additional information for unmetered ICP charges
2. These Price Categories and associated Tariff Options are only available to Residential Connections subject to the relevant conditions
3. TOU Peak and Off-Peak times defined in paragraph 19.2
4. Reactive power charges do not apply for any ICP on a Price Category ending in "N" – see paragraph 15.0
5. Transmission Prices include Transmission charges and other recoverable costs such as council rates and industry levies

21.0 Valley Distribution Network

21.1 The Valley Distribution Network Price Categories and Tariff Options described below are subject to the conditions set out in paragraphs 22.0 to 27.0, and elsewhere in this document

21.2 Valley Distribution Network Time Zone Definitions:

Valley Distribution Network	
'Winter' Months	April – September
'Summer' Months	October – March
TOU Peak Period 'PEAK'	Weekdays (Monday-Friday including public holidays): 07:00am – 11:00am (periods 15 to 22) and 5:00pm – 9:00pm (periods 35 to 42)
TOU Off-Peak Period 'OFPK'	Weekdays (Monday-Friday including public holidays) 11:00am – 5:00pm (periods 23 to 34) and 9:00pm – 7:00am (periods 43 to 14) Weekends (Saturday & Sunday) all day and night

	WINTER							SUMMER						
	April - September							October - March						
	Mon	Tue	Wed	Thu	Fri	Sat	Sun	Mon	Tue	Wed	Thu	Fri	Sat	Sun
12am-7am	OFPK							OFPK						
7am-11am	PEAK					OFPK		PEAK					OFPK	
11am-5pm	OFPK							OFPK						
5pm-9pm	PEAK					OFPK		PEAK					OFPK	
9pm-12am	OFPK							OFPK						

22.0 Valley Network Price Categories and Prices

Price Category Code	Description	Price Component Code	Register Content Code/ Period of Availability	Data File Format Availability	Delivery Price (ex GST)	Unit of Measure
V01	Unmetered Load¹			<i>EIEP1</i>		
	Daily Charge	V01			45.00	c/day
	Variable Charge	V01-UNML			13.79	c/kWh
V02	Unmetered Streetlights (NZTA / Council only)			<i>EIEP1</i>		
	Daily Charge	V02			19.16	c/fixture/day
	Variable Charge	V02-UNML			0.00	c/kWh
V05S²	Residential Low Fixed Charge			<i>EIEP1</i>		
	Daily Charge	V05S-FDC			60.00	c/day
	TOU Peak ³ – Winter	V05S-PEAK			19.34	c/kWh
	TOU Peak ³ – Summer	V05S-PEAK			19.34	c/kWh
	TOU Off-Peak ³	V05S-OFPK			6.93	c/kWh
	Controlled	V05S-CTRL	CN17	17 hrs per day	5.93	c/kWh
	Unmetered	V05S-UNML			13.20	c/kWh
	Uncontrolled	V05S-24UC			10.78	c/kWh
	Distributed Generation	V05S-24DG	EG24	24 hrs per day	0.00	c/kWh
V06S	General (up to and including 3 Phase 63 amps)			<i>EIEP1</i>		
	Daily Charge	V06S-FDC			130.00	c/day
	TOU Peak ³ – Winter	V06S-PEAK			16.15	c/kWh
	TOU Peak ³ – Summer	V06S-PEAK			16.15	c/kWh
	TOU Off-Peak ³	V06S-OFPK			3.74	c/kWh
	Controlled	V06S-CTRL	CN17	17 hrs per day	2.74	c/kWh
	Unmetered	V06S-UNML			10.01	c/kWh
	Uncontrolled	V06S-24UC			7.59	c/kWh
	Distributed Generation	V06S-24DG	EG24	24 hrs per day	0.00	c/kWh
V08⁶	Temporary Accommodation			<i>EIEP1</i>		
	Daily Charge	V08-FDC			145.00	c/day
	TOU Peak ³ – Winter	V08-PEAK			16.10	c/kWh
	TOU Peak ³ – Summer	V08-PEAK			16.10	c/kWh
	TOU Off-Peak ³	V08-OFPK			2.75	c/kWh
	Controlled	V08-CTRL	CN17	17 hrs per day	2.75	c/kWh
	Unmetered	V08-UNML			10.01	c/kWh
	Uncontrolled	V08-24UC			6.90	c/kWh
	Distributed Generation	V08-24DG	EG24	24 hrs per day	0.00	c/kWh
V22	Commercial (greater than 3 Phase 63 amps to 3 phase 250 amps)			<i>EIEP1</i>		
	Daily Charge	V22-FDC			12.79	\$/day

Price Category Code	Description	Price Component Code	Register Content Code/ Period of Availability	Data File Format Availability	Delivery Price (ex GST)	Unit of Measure
	TOU Peak ³ – Winter	V22-PEAK			15.74	c/kWh
	TOU Peak ³ – Summer	V22-PEAK			15.74	c/kWh
	TOU Off-Peak ³	V22-OFPK			3.73	c/kWh
	Uncontrolled	V22-24UC			7.46	c/kWh
	Distributed Generation	V22-24DG	EG24	24 hrs per day	0.00	c/kWh
V28⁵	Commercial (200 – 299 kVA)			<i>EIEP3</i>		
	Daily Charge	V28-FDC			30.29	\$/day
	TOU Peak ³ – Winter	V28-PEAK			14.03	c/kWh
	TOU Peak ³ – Summer	V28-PEAK			14.03	c/kWh
	TOU Off-Peak ³	V28-OFPK			3.46	c/kWh
	Uncontrolled	V28-24UC			6.74	c/kWh
	Reactive Power Charge ⁴	V28-PFC			7.00	\$/kVAr/mth
	Distributed Generation	V28N-24DG	EG24	24 hrs per day	0.00	c/kWh
V40⁴	Large Commercial (300 – 1,499 kVA)			<i>EIEP3</i>		
	Distribution Charge	V40-DIST			POA	\$/day
	Transmission Charge ⁵	V40-TRANS			POA	\$/day
	Variable Charge	V40-KWH			0.00	\$/kWh
	Reactive Power Charge ⁴	V40-PFC			7.00	\$/kVAr/mth
V60⁴	Large Commercial (≥ 1,500 kVA)			<i>EIEP3</i>		
	Distribution Charge	V60-DIST			POA	\$/day
	Transmission Charge ⁵	V60-TRANS			POA	\$/day
	Variable Charge	V60-KWH			0.00	\$/kWh
	Reactive Power Charge ⁴	V60-PFC			7.00	\$/kVAr/mth

1. Please refer to the unmetered supply schedule for additional information for unmetered ICP charges
2. These Price Categories and associated prices are only available to Residential Connections, subject to the relevant conditions
3. TOU Peak and Off-Peak times defined in paragraph 21.2
4. Reactive power charges do not apply for any ICP on a Price Category ending in "N" – see paragraph 15.0
5. Transmission Prices include Transmission charges and other recoverable costs such as council rates and industry levies
6. Only available to Temporary Accommodation, subject to the relevant conditions in Paragraph 26.0

23.0 Data File Requirements - Eastern Region

23.1 Variable consumption should be provided to Powerco as follows:

Price Category	Tariff Option	EIEP1 Data file should contain	Data file type required
T05S	PEAK	T05S-PEAK	EIEP1
	OFPK	T05S-OFPK	
	CTRL	T05S-CTRL	
	UNML	T05S-UNML	
	24UC	T05S-24UC	
	24DG	T05S-24DG	
T06S	PEAK	T06S-PEAK	EIEP1
	OFPK	T06S-OFPK	
	CTRL	T06S-CTRL	
	UNML	T06S-UNML	
	24UC	T06S-24UC	
	24DG	T06S-24DG	
T22	PEAK	T22-PEAK	EIEP1
	OFPK	T22-OFPK	
	CTRL	T22-CTRL	
	24UC	T22-24UC	
	24DG	T22-24DG	
T28N	24UC	T28N-24UC	EIEP1
	24DG	T28N-24DG	
V05S	PEAK	V05S-PEAK	EIEP1
	OFPK	V05S-OFPK	
	CTRL	V05S-CTRL	
	UNML	V05S-UNML	
	24UC	V05S-24UC	
	24DG	V05S-24DG	
V06S	PEAK	V06S-PEAK	EIEP1
	OFPK	V06S-OFPK	
	CTRL	V06S-CTRL	
	UNML	V06S-UNML	
	24UC	V06S-24UC	
	24DG	V06S-24DG	
V08	PEAK	V08-PEAK	EIEP1
	OFPK	V08-OFPK	
	CTRL	V08-CTRL	
	UNML	V08-UNML	
	24UC	V08-24UC	
	24DG	V08-24DG	
V22	PEAK	V22-PEAK	EIEP1
	OFPK	V22-OFPK	
	24UC	V22-24UC	
	24DG	V22-24DG	
V28N	24UC	V28N-24UC	EIEP1
	24DG	V28N-24DG	

Price Category Code	Description	Tariff Option	Price Component Code	Register Content Code / Period of Availability	Availability
T05S V05S	Daily Charge	FDC	*05S-FDC		
	TOU Peak - Uncontrolled	PEAK	*05S-PEAK	7304	24 hours per day
	TOU Off-Peak - Uncontrolled	OFPK	*05S-OFPK	7304	24 hours per day
	Controlled	CTRL	*05S-CTRL	CN17	17 hours per day
	Night Only	OFPK	*05S-OFPK	CN8 & NO8	23:00 - 07:00
	Night with Boost	OFPK	*05S-OFPK	CN9 & NB9	+14:00 - 15:00
	Unmetered	UNML	*05S-UNML		24 hours per day
	Uncontrolled	24UC	*05S-24UC	UN24 D16 / N8 IN17 DIN16 / NIN8	24 hours per day
T06S V06S	Distributed Generation	24DG	*05S-24DG	EG24	24 hours per day
	Daily Charge	FDC	*06S-FDC		
	TOU Peak - Uncontrolled	PEAK	*06S-PEAK	7304	24 hours per day
	TOU Off-Peak - Uncontrolled	OFPK	*06S-OFPK	7304	24 hours per day
	Controlled	CTRL	*06S-CTRL	CN17	17 hours per day
	Night	OFPK	*06S-OFPK	CN8 & NO8	23:00 - 07:00
	Night with Boost	OFPK	*06S-OFPK	CN9 & NB9	+14:00 - 15:00
	Unmetered	UNML	*06S-UNML		24 hours per day
	Uncontrolled	24UC	*06S-24UC	UN24 D16 / N8 IN17 DIN16 / NIN8	24 hours per day
	Distributed Generation	24DG	*06S-24DG	EG24	24 hours per day

The asterisk “*” represents either T or V, when referring to the ICP’s relevant Price Category

Part C: Specific Conditions

24.0 Conditions: Builder's Temporary Supply

- 24.1 Builder's supply Connections must not be on "Low Fixed Charge Price Categories", as builder's supplies are not considered Residential Connections, and must be on the following:
- (a) Western Region: "W06A" or "W06B", or higher as applicable
 - (b) Eastern Region: "T06S" or "V06S", or higher as applicable
- 24.2 Powerco will not accept temporary builder's supplies Connections as unmetered Connections
- 24.3 Powerco requires an ICP for each and every temporary connection. Therefore, sites with multiple temporary supplies require separate ICPs to be established for each point of connection.
- 24.4 Builder's Temporary Supplies are available for a period of up to six months

25.0 Conditions: Low Fixed Charge Price Categories and Tariff Options

- 25.1 The Low Fixed Charge Price Categories (Western Region: W05A and W05B, Eastern Region: T05S and V05S) are only available:
- (a) For Residential Connections that are supplied electricity;
 - (b) In conjunction with the Retailer's Consumer Low-Usage Tariff Option that complies with the requirements of the Electricity (Low Fixed Tariff Option for Domestic Consumers) Regulations 2004;
 - (c) If the Distributor's prior approval (that approval not to be unreasonably withheld) of the Retailer's process for ascertaining that the relevant Consumer is eligible for the Low Usage Tariff Option has been given;

Subject to the condition that if the Distributor becomes aware that a Low-Usage Tariff Option has been made available to, or is being applied by, a Retailer other than in accordance with this paragraph, the Distributor may remove the relevant Consumer from the Low-Usage Tariff Option to another Price Category and adjust the charges accordingly.

Such adjustment to the charges may include recovery from the Retailer of any underpayment by the Retailer resulting from the Low-Usage Tariff Option being applied other than in accordance with this Pricing Schedule, together with interest, calculated at the Interest Rate on the first day of the period during which the Low-Usage Tariff Option was incorrectly applied, until the day on which the underpayment is recovered by the Distributor.

26.0 Conditions: Temporary Accommodation

- 26.1 The Price Category V08 is available only for Connections that:
- (a) Meet the definition of Temporary Accommodation

- (b) Are supplied from Kopu GXP
- (c) Have a total connected capacity of less than 15kVA (typically less than or equal to 1ph63A, 3ph20A or equivalent)

27.0 Conditions: Asset-Specific Delivery Charges

- 27.1 Asset-specific delivery charges will apply to Consumers that have installed capacity of 300 kVA or greater, but may also be applied to smaller Connections where applicable – for instance if a backup supply is required, or there is significant generation at the site
- 27.2 Asset-specific delivery charges (Price Categories where pricing is listed as POA) charged pursuant to the Network Agreement will be disclosed upon request to the Consumer to which these charges apply, or to the Consumer's current Retailer
- 27.3 As of 1 April 2020, the chargeable AMD for the V40 and T50 Price Categories is 100 kW or the actual demand, whichever is the higher. This change introduced a minimum demand level (consistent with the methodology in Powerco's Western Region), which ensures the cost of providing upstream distribution capacity is adequately recovered.

Meter configuration



Part D: Meter Configuration

28.0 Controlled Price Category and Price Components

28.1 For the Western and Eastern Regions:

- (a) Consumers allocated to a Controlled Price Category or Controlled Tariff Option may have their load controlled by the Distributor:

For the purposes of grid and network security;

In abnormal supply or operating circumstances (eg a shortage or anticipated shortage of electricity); and

Acting on the instruction of the Instructing Retailer

- (b) If the Retailer is not agreeable to its Consumers' load being controlled by the Distributor for the purposes and in the circumstances set out above, the Retailer must choose or request the Distributor to allocate the Consumer to an Uncontrolled Price Category or Uncontrolled Tariff Option.
- (c) All Consumers in Controlled Price Categories or Controlled Tariff Options have, via their Retailer, agreed to assign to the Distributor the whole of the right to control the load (for whatever purpose)

28.2 The extent of control will be:

- (a) Under normal supply circumstances, at any time for a maximum of seven hours per day
- (b) Under abnormal supply or operating circumstances (eg where there is a shortage or anticipated shortage of electricity), control may be for greater than seven hours per day.

28.3 To be eligible for the Controlled Price Category or Controlled Tariff Option, the Retailer must ensure that the Consumer has Load Control Equipment that:

- (a) Is, and will continue to be, in working order;
- (b) When in operation, will result in a reduction in the Consumer's demand, where such load reduction is instantaneously available at the time of load-shedding operation. For example, by controlling the supply of electricity to those of the Consumer's goods (including, without limitation, Consumer goods or capital goods) that consume or intend to consume electricity to be controlled;
- (c) Will be activated by the Distributor's load-signalling equipment (both pilot wire (cascade) and ripple control signalling equipment);
- (d) Will not block or interfere with the Distributor's load-signalling equipment; and
- (e) Does not solely consist of a controlled Night meter.

28.4 No Controlled Price Category or Controlled Tariff Option is available at those GXPs where the Distributor does not have operational Load Control Equipment.

28.5 Examples of Consumer appliances for a Controlled Tariff Option can include but are not limited to:

- Hot water cylinders;
- Electric kilns, or;
- Any appliances representing a significant proportion of the Consumer's demand that may be controlled without increasing the Consumer's uncontrolled demand.

29.0 Existing Load Control Signals by Region

GXP	CN8 NO8	CN9 NB9	CN17 / IN17 DIN16 / NIN8	CN23
EASTERN REGION – TAURANGA				
Tauranga (TGA0111 and TGA0331)	✓	✓	✓	✓
Mt Maunganui (MTM0331)	✓	✓	✓	✓
Te Matai (TMI0331)	✓	✓	✓	✓
Kaitemako (KMO0331)	✓	✓	✓	✓
EASTERN REGION – VALLEY				
Arapuni (ARI1101)	✓	✗	✓	✗
Hinuera (HIN0331)	✓	✗	✓	✗
Kinleith (KIN0331 & KIN0112)	✓	✗	✓	✗
Kopu (KPU0661)	✓	✗	✓	✗
Piako (PAO1101)	✓	✗	✓	✗
Waihou (WHU0331)	✓	✗	✓	✗
Waikino (WKO0331)	✓	✗	✓	✗
WESTERN REGION – WAIRARAPA				
Greytown (GYT0331)	✓	✓	✓	✗
Masterton (MST0331)	✓	✓	✓	✗
WESTERN REGION – MANAWATU				
Bunnythorpe (BPE0331)	✓	✓	✓	✗
Linton (LTN0331)	✓	✓	✓	✗
Mangamaire (MGM0331)	✓	✗	✓	✗
WESTERN REGION – TARANAKI				
Carrington (CST0331)	✓	✓	✓	✗
Huirangi (HUI0331)	✓	✗	✓	✗
Hawera (HWA0331)	✓	✓	✓	✗
Opunake (OPK0331)	✓	✓	✓	✗
Stratford (SFD0331)	✓	✗	✓	✗
WESTERN REGION – WHANGANUI				
Brunswick (BRK0331)	✓	✗	✓	✗
Marton (MTN0331)	✓	✗	✓	✗
Mataroa (MTR0331)	✓	✗	✓	✗
Ohakune (OKN0111)	✓	✗	✓	✗
Wanganui (WGN0331)	✓	✗	✓	✗
Waverley (WVY0111)	-	-	-	-

✓ Control signal available

✗ Control Signal not available

- No load control available

Note: Metering configuration code CN9 / NB9 is closed to new connections.

Note: CN23 is closed to new connections including meter replacements

30.0 Tariff Option Descriptions & Conditions

Description	Tariff Option	Prior Year Tariffs	Register Content Code	Content Code Description
TOU Peak	PEAK	PEAK PKIN	7304	Refer “Uncontrolled” description
TOU Off-peak	OFPK	OFPK OPIN	7304	Refer “Uncontrolled” description
Controlled	CTRL	CTRL	CN17 CN23	Electricity under normal supply circumstances is usually available for at least 17 hours per day Under abnormal supply or operating circumstances (eg where there is a shortage or anticipated shortage of electricity), control may be for greater than seven hours per day (eg 22 hours per day) CN23 closed to new connections including meter replacements
Uncontrolled	24UC	24UC	UN24 D16 / N8	A 24-hour continuous supply Also applies for both registers on Day/Night meters (with or without associated controllable load)
All-inclusive single meter	24UC	AICO	IN17 DIN16 / NIN8	A 24-hour supply and additional controllable supply, on a single meter register configuration. If the single meter has two registers, then consumption must be submitted as 24UC and CTRL. Under normal supply circumstances, electricity is usually available to controlled Consumer appliances for at least 17 hours per day. Under abnormal supply or operating circumstances control of the controllable supply may be for greater than seven hours per day.
Night supply only	OFPK	NITE	CN8 NO8	Available only for appliances permanently wired to a separate meter. Controlled option with power between the hours of 2300 to 0700. Appliances must not draw current outside of these hours Consumers with separately controlled night meters, and no other form of controllable supply, are not eligible for a ‘Controlled’ Tariff Option.
Night with boost	OFPK	NITE	CN9 NB9	As above, but with a “boost period” of 60 minutes, between 14:00-15:00 Only available in certain areas; closed to new connections
Distributed Generation	24DG	24DG	EG24	Available only to Connections that are capable of exporting onto the Distributor’s Network. This Tariff Option is to only apply to the separately metered export volumes. To be eligible for this Tariff Option the connection must comply with the Distributors Distributed Generation policy (per paragraph 9.0).

31.0 Metering Requirements

- 31.1 Eastern Region Network: Consumers with Installed Capacity of greater than or equal to 200 kVA must have appropriate TOU Metering (T28/V28 and larger)
- 31.2 Western Region Network: TOU Metering is required for:
- Connections created on or after 1 April 2024: Installed Capacity of greater than or equal to 200 kVA (effectively W29 and larger)
 - Connections created prior to 1 April 2024: Consumers with a capacity of greater than or equal to 101 kVA (effectively W29 and larger)

32.0 Meter Register Code Reporting

- 32.1 Within each Price Category, there may be more than one variable charge available for use, and it will be possible for a Consumer to be connected to multiple supply options, each with its own meter register. The applicable Tariffs are mapped to registers in Section 30.0

Each monthly volume quantity submitted will then incorporate, for that ICP, a volume for each selected variable Delivery Charge category. Each volume will then be associated with a Tariff Option (PEAK, OFPK, CTRL, 24UC, etc).

- 32.2 For the W29, W50, W60, V28, V40, V60, T28, T50 or T60 Price Categories, volumes are to be submitted monthly via the EIEP3 file format
- 32.3 If volume for Price Categories that require EIEP1 is submitted under an invalid Tariff Option, this volume will be charged at the highest available rate for that Price Category, generally '24UC'

Streetlights / Unmetered supply



Part E: Streetlights / Unmetered Supply

33.0 Introduction

- 33.1 Unmetered supply charges are detailed in Sections 17.0, 20.0 and 22.0. This section provides Retailers with information relating to charging unmetered ICPs

34.0 Requirements - Streetlights

- 34.1 Powerco must receive (on a monthly basis) the streetlight or other unmetered load database from the Retailer, or council / New Zealand Transport Agency (NZTA) (or both) as agreed, by the fourth working day of the calendar month
- 34.2 Where Powerco has not received the streetlight database as required, or no longer holds confidence in the quantities detailed by the Retailer or council / NZTA (or both), Powerco will estimate, on a reasonable endeavours basis, the light fitting quantity
- 34.3 Where the data is found to not be an accurate reflection of the streetlights that are installed, Powerco may apply additional charges as per paragraph 8.1 in recognition of the costs it incurs through the provision of inaccurate data
- 34.4 The requirements of 34.1 – 34.3 above do not apply to lights where evidence has been provided to Powerco that all consumption is metered by certified revenue metering installations

35.0 Conditions

- 35.1 Unmetered Price Categories are not available for Residential Connections
- 35.2 The Distributor does not allow new connections for Unmetered Supplies (such as streetlights) to use a single ICP across multiple points of connection (GXPs)
- 35.3 The Unmetered Price Categories are not available for new under-verandah lighting and private streetlight connections from 1 April 2015 (ie all new connections must be metered)
- 35.4 Unmetered supply charges are allocated as:
- (a) V01, T01, W01A, W01B – Unmetered load such as council flow meters, pumps, cameras, small telecommunication cabinets and others. The Distributor will determine eligibility for this Price Category via Powerco's connections process and policy.
 - (b) V02, T02, W02A, W02B – Council/NZTA streetlighting
- 35.5 Where a permanent unmetered supply's connected capacity requirement exceeds 5kVA, single phase metering is necessary. Streetlighting is excluded on approval via Powerco's connections process and policy.
- 35.6 Volume data for all unmetered ICPs must be included in a trader's EIEP1 file using the appropriate Price Category and Tariff Option of UNML. For example, T01-UNML or T02-UNML.

- 35.7 Where a metered ICP also has load which is unmetered (such as under-verandah lighting, private lights, or signage) the unmetered volume data must be submitted in the Trader's EIEP1 file using the relevant Price Category and the Tariff Option UNML. For example, an ICP on the T06S Price Category should have the code T06S-UNML for all unmetered load associated with that ICP.

36.0 Process

- 36.1 Charge codes are allocated to each ICP depending on the type of installation or supply it has installed. Some ICPs may have several installations under the same charge code and/or a variety of charge codes associated with it.
- 36.2 The Distributor will populate the electricity Registry with the equipment wattage and operating hours according to the Electricity Authority Unmetered Load Guidelines:
- (a) From 1 April 2018 the load factor in the Registry unmetered load description field is 0% (prior to 1 April 2018 this factor was set to 10%); and
 - (b) Total equipment wattage is equal to the equipment wattage (including ballast if applicable) multiplied by the quantity of fixtures installed.
- 36.3 Unmetered streetlights not reconciled as part of a Distributor Unmetered Load (DUML) will have a ballast figures applied as per the standardised table of streetlight wattages published by the Electricity Authority
https://www.ea.govt.nz/documents/211/Standardised_table_of_streetlight_wattages.xlsx
- 36.4 Charges for Council and New Zealand Transport Agency (NZTA) unmetered streetlighting (V02, T02, W02A/B) are determined by:
- (a) Fixed Charge - quantity (number of light fixtures connected) multiplied by the unmetered supply Fixed Charge per day; and
 - (b) Powerco will estimate streetlight-fitting quantities and apply a penalty in instances where streetlight database information is not provided or updated as required.
- 36.5 Charges for V01, T01, W01A & W01B unmetered supply are determined on:
- (a) The equipment wattage (including ballast if applicable);
 - (b) Operating hours (number of hours the equipment is consuming electricity); and
 - (c) The quantity of fixtures/equipment installed.

37.0 Calculation

- 37.1 **Unmetered Streetlights Fixed Charge Calculation** (Council/NZTA Streetlights on T02 or V02 Price Categories) = [The quantity of equipment installed] x [Days in Month] x [Delivery Price]
- 37.2 **Unmetered Load kWh Calculation** (excluding Council/NZTA Streetlights) = [The quantity of equipment installed] x [Wattage plus ballast (if applicable)] x [Days in Month] x [Operating Hours] / 1,000

- (a) For example: 2 x 50W Lights + Ballast of 11W, 31 days in month, 12 daily operating hours = $\{[2 \times (50 + 11)] \times 31 \times 12\} / 1,000 = 45.38 \text{ kWh}$.

37.3 Unmetered Load Charge Calculation (excluding Council/NZTA Streetlights) =
Unmetered Load kWh Calculation (kWh) x Delivery Price.

- (a) For example: 1 x 100W appliance, 31 days in month, 8 daily operating hours = $(1 \times 100 \times 31 \times 8) / 1,000 = 24.80 \text{ kWh}$.

37.4 Shared Unmetered Load: If the Unmetered load is shared across multiple ICPs then the consumption determined in the equations above should be divided by the number of ICPs sharing the load. This figure should then be applied to every ICP sharing that unmetered load.

PAGE INTENTIONALLY LEFT BLANK

Additional information



Section Two: Loss Factors

1.0 General

- 1.1 Losses and loss factors may be reviewed and amended by the Distributor from time to time, on reasonable notice to the Retailer and not less notice than specified in the applicable Network Agreement, to ensure that they reflect total unaccounted for electricity on the Network as accurately as reasonably possible
- 1.2 Losses are calculated at the balancing area level and then applied to ICPs within that balancing area, depending on the supply size and metering voltage
- 1.3 Metering Voltage: Low Voltage means metered at 230V single-phase or 400V three-phase, or unmetered; and High Voltage means metered at 6.6kV or higher voltage.

2.0 Loss Factors as of 1 April 2024

Description: Metering Voltage: Amperage:	Default Low Low	Streetlights Low Low	Medium Amp Low Medium	High Amp Low High	HV Metered High High
Taranaki	Balancing Area: BA1WESTPOCOG GXPs: Carrington (CST), Huirangi (HUI), Stratford (SFD)				
Code: Factor:	TAR 1.0610	TARSL 1.0610	TARM 1.0610	TARH 1.0610	TAR11 1.0210
South Taranaki	Balancing Area: BA2WESTPOCOG GXPs: Hawera (HWA), Opunake (OPK)				
Code: Factor:	STA 1.0720	STASL 1.0720	STAM 1.0720	STAH 1.0720	STA11 1.0350
Wanganui	Balancing Area: BA3WESTPOCOG GXPs: Brunswick (BRK), Marton (MTN), Mataroa (MTR), Ohakune (OKN), Wanganui (WGN), Waverley (WVY)				
Code: Factor:	WGN 1.0900	WGNSL 1.0900	WGNM 1.0900	WGNH 1.0900	WGN11 1.0320
Manawatu	Balancing Area: BA4WESTPOCOG GXPs: Bunnythorpe (BPE), Linton (LTN)				
Code: Factor:	MNW 1.0850	MNWSL 1.0850	MNWM 1.0850	MNWH 1.0850	MNW11 1.0360
Manawatu (2)	Balancing Area: BA5WESTPOCOG GXPs: Mangamaire (MGM)				
Code: Factor:	MW2 1.1000	MW2SL 1.1000	MW2M 1.1000	MW2H 1.1000	MW211 1.0350
Wairarapa	Balancing Area: BA6WESTPOCOG GXPs: Greytown (GYT), Masterton (MST)				
Code: Factor:	WRP 1.0840	WRPSL 1.0840	WRPM 1.0840	WRPH 1.0840	WRP11 1.0200

Description: Metering Voltage: Amperage:	Default Low Low	Streetlights Low Low	Medium Amp Low Medium	High Amp Low High	HV Metered High High
Tauranga	Balancing Area: BA1EASTPOCOG GXP: Tauranga (TGA), Mt Maunganui (MTM), Te Matai (TMI), Kaitemako (KMO)				
Code: Factor:	TGA 1.0500	n/a	TGAM 1.0400	TGAH 1.0300	TGA11 1.0200
Valley (Thames Valley/ Coromandel)	Balancing Areas: BA2EASTPOCOG, BA3EASTPOCOG, BA4EASTPOCOG, BA5EASTPOCOG GXP: Arapuni (ARI), Hinuera (HIN), Kinleith (KIN), Kopu (KPU), Piako (PKO), Waihou (WHU), Waikino (WKO)				
Code: Factor:	VLY 1.0814	n/a	VLYM 1.0695	VLYH 1.0475	VLY11 1.0330

3.0 Site-Specific Losses

3.1 The following site-specific loss codes and factors apply from 1 April 2024 (no change from 1 April 2023 loss factors)

(a) Loss Factors: Sites primarily with generation

Loss Code	Loss Factor: Load	Loss Factor: Generation
POCO001	1.070	1.070
POCG002	1.038	1.038
POCG003	1.0	1.0
POCG004	1.038	1.010
POCG005	1.080	1.080
POCG006	1.080	1.080
POCG007	1.040	1.0
POCG008	1.073	1.0
POCG009	1.080	1.080
POCG010	1.080	1.080
POCG011	1.0	1.0
POCG012	1.0652	1.0652
POCG013	1.0	1.0314
POCG014	1.0	1.0
POCG015	1.0	1.0
POCG016	1.0	1.0
POCG017	1.0	1.0
POCG018	1.048	1.048
POCG019	1.070	1.070
POCG020	1.063	1.063
POCG021	1.080	1.080
POCG022	1.063	1.063
POCG023	1.0652	1.0652
POCG024	1.0	1.0169
POCG025	1.0	1.0
POCG026	1.0	1.0
POCG027	1.0652	1.0
POCG028	1.033	1.0
POCG029	1.0	1.0
POCG030	1.0	1.0

(b) Loss Factors: Sites primarily with load

Loss Code	Loss Factor: Load	Loss Factor: Generation
POCO201	1.008	1.0
POCO202	1.011	1.0
POCO203	1.012	1.0
POCO204	1.014	1.0
POCO205	1.015	1.0
POCO206	1.017	1.0
POCO207	1.018	1.0
POCO208	1.0149	1.0
POCO209	1.023	1.0
POCO210	1.024	1.0
POCO211	1.025	1.0
POCO212	1.026	1.0
POCO213	1.029	1.0
POCO214	1.032	1.0
POCO215	1.0864	1.0
POCO216	1.038	1.0

PAGE INTENTIONALLY LEFT BLANK

Section Three: Billing and Settlement Process

1.0 General

The following covers Powerco's billing and settlement processes. Both the Distributor and the Retailer recognise that the process of calculating accurate charges is dependent on the prompt and accurate supply of information by the Retailer to both industry bodies and to the Distributor.

Standard monthly data provision and billing timeline:

1st working day of the month (revision billing)	Retailer must provide Consumption Data in EIEP1 and EIEP3 format (EIEP3 data only if it is missing or originally incorrect) for upcoming revision billing (R3, R7 and R14). Please refer to paragraph 5.2(f) of this schedule.
5th working day by 4:00 pm (initial billing)	Retailer must provide Consumption Data in EIEP1 and EIEP3 format (Consumption Data Due Date) for initial billing
6th – 7th working day	Invoices produced for direct billed Consumers and sent to Retailers or Direct Customers, as applicable
8th – 10th working day	Initial ICP billing/ GXP billing invoices produced for all Retailers
Last business day of the month	Revision invoices produced for ICP billing and sent to Retailers or direct Customers, as applicable

1.1 Retailer's Responsibility for Points of Connection:

- (a) The Retailer must adhere to the processes set out in the Network Agreement and any relevant Powerco policy when establishing or altering the physical status of a Point of Connection;
- (b) The Distributor will maintain a database of Points of Connection, referenced by Installation Control Points, and aligned to the information held by the Registry appointed under the Code to determine which Retailer is responsible for an Installation Control Point and the status of the Point of Connection; and
- (c) The Retailer may request, for all Installation Control Points for which the Distributor has the Retailer listed as being responsible, an electronic copy of the relevant part of the database.

2.0 Submissions – Consumption Data

- 2.1 Initial Billing, each Retailer must provide Consumption Data for the Consumption Month to be billed on or before the 5th working day of the Processing Month (Consumption Data Due Date). For revised billing, please refer to the table above.
- 2.2 Each Retailer is to provide Consumption Data in a replacement normalised format (which is data adjusted to reflect a start and end date that matches the start and end date of Consumption Month to be invoiced).
- 2.3 Consumption Data must be normalised using the Replacement Normalised methodology. Retailers may not use any other submission methodologies (such as Incremental Normalised) without consultation with, and approval by, the Distributor.
- 2.4 Each Retailer should submit Consumption Data to the Distributor via the registry EIEP Transfer Tool. Files delivered to Powerco must be compliant with the format

structure of the latest regulated version EIEP1 and EIEP3 protocols. Each Retailer must upload a single Initial File, which includes records for all ICPs on any of the Distributor's Networks.

- 2.5 If, by the Consumption Data Due Date, Retailers have not submitted an Initial File that complies with the latest regulated version of the EIEP1 and EIEP3 protocols (or have not submitted an Initial File at all) then the Initial File will not be accepted for billing and the Distributor may estimate volume for such record as detailed in paragraph 3.1(c)
- 2.6 Consumption Data received by the Distributor after the Consumption Data Due Date may be subject to a Late Consumption Data fee set out in paragraph 8.1 of Part A, Section One, of this document

3.0 Process by Billing Methodology

3.1 ICP-Based Billing Process

- (a) The ICP-based invoice issued to each Retailer will detail the ICP related variable and fixed charges that apply across the Eastern and Western Regions
- (b) If a Consumer is contracted directly with the Distributor via a Network Agreement, it will be denoted on the Registry via the Direct Billed Status field. These Consumers are billed directly for Delivery Charges by the Distributor.
- (c) The Distributor will calculate Delivery Charges for the Consumption Month based on Consumption Data provided (or estimated) and the number of Active ICPs on the Distributor's Network. For any ICPs that were Active during the Consumption Month where Consumption Data has not been provided, is incomplete, materially incorrect, or not in the specified format the Distributor may estimate consumption based on:
 - The average daily volume for ICPs in the relevant Price Category for the month prior to the Consumption Month, or
 - For half-hour metered ICPs, the relevant ICP's consumption from the month prior to the Consumption Month (or the latest available Consumption Month).
- (d) The Distributor will provide an output file of all amounts invoiced with each invoice issued. The detail file will be in the format as specified in the regulated version of the EIEP1 protocol. Any Consumption Data estimated by the Distributor will have a "PROJ" (projection) appended to the relevant tariff option within this output file.

3.2 GXP-Based Billing Process (to cease from 1 April 2024)

- (a) GXP-based billing will cease for Initial billing after the March 2024 billing month. However, GXP billing invoices relating to prior revision periods will still be produced over the processing months from April to November 2024.

4.0 Payment

- 4.1 The invoice for GXP-based Delivery Charges for the Consumption Month and any revision amounts will be sent to the Retailer by the 10th working day of the Payment Month, and will be payable on the 20th day of that same month
- 4.2 The invoice for ICP-based Delivery Charges for the Consumption Month will be sent to the Retailer by the 10th working day of the Payment Month, and will be payable on the 20th day of that same month
- 4.3 ICP-based revision invoices or credit notes are sent throughout the remainder of the Processing Month and will be due for payment on the 20th day of the following month
- 4.4 If the Distributor fails to send an invoice to the Retailer by the 10th working day of the Payment Month, then the due date for payment will be extended by one working day for each working day that the invoice is late
- 4.5 If any part of an invoice is not paid by the due date, Default Interest may be charged on the outstanding amount for the period that the Invoice remains unpaid.

5.0 Revision Cycles and Reconciliation

5.1 Revision Cycles

- (a) Both the Distributor and the Retailer recognise that the cyclical nature of meter reading makes it impractical to provide completely accurate figures for consumption for each Point of Connection within the timeframe required for payment of Delivery Charges. It is, therefore, necessary to provide a structure for subsequent revisions of prior billed periods.
- (b) Each revision cycle will account for changes in fixed and variable Delivery Charges due, based on Retailer switches, status changes, and Replacement Data uploaded by Retailers submitting to Powerco under the Replacement Normalised methodology
- (c) Any Retailer submitting Replacement Normalised data to Powerco may submit Replacement Data up to 14 months from the Consumption Month to which the Replacement Data relates
- (d) Where the Distributor reasonably considers that an additional revision cycle is required, it may, at its discretion, perform a 1-month revision in addition to the 3, 7, and 14-month revisions provided for in paragraph 5.2(f)

5.2 Replacement Data

- (a) Replacement Data can be either uploaded via the registry EIEP transfer tool (or provided via previously agreed methods) at any time up to 14 months from the Consumption Month to which the Replacement Data relates. Replacement and Partial Replacement files will be subject to validation against file format and submission type business rules as applied by the Distributor from time to time and as outlined in paragraphs 2.4 and 2.5.

Replacement Data submitted will be reconciled and billed when the Distributor runs its 3, 7, and 14-month revision billing cycles.

- (b) For Incremental normalised submissions (subject to paragraph 2.3), the Retailer is to progressively adjust the volumes in each Retailer billing cycle. Accordingly, only Partial Replacement Files will be accepted. Full Replacement Files will not be accepted under this method unless there has been a material error with the initial file received.
- (c) Incremental Normalised submissions (subject to paragraph 2.3) may include prior period corrections. These volumes will be billed along with the normalised volumes provided in the Current Month submission. Prior period volumes that can be attributed to consumption periods outside the Distributor's revision cycle limit (14 months) will be disregarded.
- (d) For Replacement Normalised submissions, volumes are not progressively revised and are replaced with Full Replacement Files or Partial Replacement Files. As such, the Distributor requires that Retailers submitting under this methodology supply 3, 7 and 14-month revision files. Replacement Data must comply with the latest regulated version of the EIEP1 protocol for full (R Files) and partial (X Files).
- (e) Replacement files for HHR metered data must comply with the latest regulated version of the EIEP3 protocol. Powerco's system processes EIEP3 full replacement files at the ICP level and replaces the volume for only those ICPs which are included in the file. This also applies for partial replacement files.
- (f) For GXP and ICP-based billing, volumes will be progressively revised as set out in the revision schedule

5.3 Revision Schedule

Processing Month	Revision	Report Month	ICP		GXP
April 2024	Initial	March 2024	✓		✓
	R3	December 2023	✓		✓
	R7	August 2023	✓		✓
	R14	January 2023	✓		✓
May 2024	Initial	April 2024	✓	<<<	n/a
	R3	January 2024	✓		✓
	R7	September 2023	✓		✓
	R14	February 2023	✓		✓
June 2024	Initial	May 2024	✓	<<<	n/a
	R3	February 2024	✓		✓
	R7	October 2023	✓		✓
	R14	March 2023	✓		✓
July 2024	Initial	June 2024	✓	<<<	n/a
	R3	March 2024	✓		✓
	R7	November 2023	✓		✓
	R14	April 2023	✓		✓
August 2024	Initial	July 2024	✓	<<<	n/a
	R3	April 2024	✓	<<<	n/a
	R7	December 2023	✓		✓
	R14	May 2023	✓		✓
September 2024	Initial	August 2024	✓	<<<	n/a
	R3	May 2024	✓	<<<	n/a
	R7	January 2024	✓		✓
	R14	June 2023	✓		✓
October 2024	Initial	September 2024	✓	<<<	n/a
	R3	June 2024	✓	<<<	n/a
	R7	February 2024	✓		✓
	R14	July 2023	✓		✓
November 2024	Initial	October 2024	✓	<<<	n/a
	R3	July 2024	✓	<<<	n/a
	R7	March 2024	✓		✓
	R14	August 2023	✓		✓
December 2024	Initial	November 2024	✓	<<<	n/a
	R3	August 2024	✓	<<<	n/a
	R7	April 2024	✓	<<<	n/a
	R14	September 2023	✓	<<<	X
January 2025	Initial	December 2024	✓	<<<	n/a
	R3	September 2024	✓	<<<	n/a
	R7	May 2024	✓	<<<	n/a
	R14	October 2023	✓	<<<	X
February 2025	Initial	January 2025	✓	<<<	n/a
	R3	October 2024	✓	<<<	n/a
	R7	June 2024	✓	<<<	n/a
	R14	November 2023	✓	<<<	X
March 2025	Initial	February 2025	✓	<<<	n/a
	R3	November 2024	✓	<<<	n/a
	R7	July 2024	✓	<<<	n/a
	R14	December 2023	✓	<<<	X

PAGE INTENTIONALLY LEFT BLANK

POWERco